



**July 14th-18th
2026**

Cover Photo by Sara Comer

98th Annual American Legion
Cherokee County Fair
Columbus, Kansas 2026



Labette Bank



WE LOVE

THE CHEROKEE

COUNTY FAIR



PROUDLY SUPPORTING OUR YOUTH!

CALENDAR OF EVENTS

ENTRIES: All 4-H/FFA/HYA entries (excluding livestock), unless otherwise stated, must be in place by 10:00 a.m. Tuesday, July 14th. All 4-H/FFA/HYA entries & livestock must remain until 10:00 p.m. Saturday, July 18th or when 4-H agent releases. Open Class livestock can be released at 10:00 a.m. Saturday morning of Fair.

Fair book printing provided by 4-State Printing – Columbus, Kansas

SATURDAY, June 27th

4-H/FFA/HYA Style Revue Judging – Extension Building

- Clothing Construction Style Revue begins at 9:00 a.m.
- Buymanship begins at 10:00 a.m.

MONDAY, JULY 6TH

4-H/FFA/HYA Foods Judging at 12:00 p.m.-2:30 p.m.

WEDNESDAY, JULY 8TH

4-H/FFA/HYA Pre-Fair Judging (visual arts, woodworking, electric, photo) at 9:00 a.m.-11:00 a.m.

SATURDAY, JULY 11th

4-H/FFA/HYA Horse Show – Halter & Performance timed events at 9:00 a.m.

SUNDAY, JULY 12th

Open Quonset entries taken (crafts, photos, crops, etc.) at 6:00 p.m.-7:00 p.m.

MONDAY, JULY 13th

Open Quonset hut entries taken at 7:00 a.m.– 10:00 a.m.

4-H/FFA/HYA Entries taken 8 a.m. -9:45 a.m. Horticulture, (Entomology, Geology, Leadership and Personal Development, Building Block Engineering, AG Mechanics, Rocketry, Shooting Sports, Wildlife, & Robotics) conference judging starts at 10:00 a.m.

4-H/FFA/HYA Clothing Construction – Extension Office at 10:00 a.m.

4-H/FFA/HYA Rabbit & Poultry check in/weigh in at 6:00 p.m. - 8:30 p.m.

**4-H BLDG OPEN 10:00 a.m. – 8:00 p.m. TUESDAY – THURSDAY
10:00 a.m. - 9:00 p.m. Friday
10:00 a.m. - 7:00 p.m. SATURDAY**

QUONSET HUT OPEN 6:00 p.m. – 10:00 p.m. TUESDAY – SATURDAY

TUESDAY, JULY 14th

Heartland Rural Electric and Heartland Propane Serving juice & donuts to exhibitors at 7:30 a.m.

Pledge of Allegiance & National Anthem at 7:45 a.m.

Poultry 4-H/FFA/HYA & Open at 8:00 a.m.

Rabbit's 4-H/FFA/HYA & Open at 8:00 a.m.

Livestock in Place by 10:00 a.m.

4-H/FFA/HYA Dog Show Showmanship and Obedience at 1:00 p.m.

Pedal Tractor Pull at 5:30 p.m. Location Country RD in front of Beer Garden

4-H/FFA/HYA Dog Rally & Agility at 6:30 p.m.

WEDNESDAY, JULY 15th

Frontier Farm Credit Serving juice & donuts to exhibitors at 7:30 a.m.
Pledge of Allegiance & National Anthem at 7:45 a.m.
Swine 4-H/FFA/HYA & Open Showmanship, Market, Breeding at 8:00 a.m.
Sheep 4-H/FFA/HYA & Open Showmanship, Market, Breeding at 1:00 p.m.
4-H/FFA/HYA Public Style Revue – Held in the Fair Grounds arena at 5:30 p.m.
Awards, 4-H Fair Coronation, Fair Buddies at 6:00 p.m.
Followed by Dessert Auction and Ice Cream Social

THURSDAY, JULY 16th

Donuts courtesy Mercy Hospital at 8:00 a.m.
Pledge of Allegiance & National Anthem at 8:00 a.m.
Meat Goats 4-H/FFA/HYA & Open Showmanship, Market, Breeding at 9:00 a.m.
Beef Show 4-H/FFA/HYA & Open Breeding, Showmanship, Bucket Calf, Feeder,
Market at 5:00 p.m.
Watermelon feed for exhibitors sponsored by Columbus & Baxter Springs
Farmer's CO-OP

FRIDAY, JULY 17th

Farm Bureau Breakfast at 7:30 – 9:00 a.m.
Pledge of Allegiance & National Anthem at 8:00 a.m.
Dairy Cattle 4-H/FFA/HYA & Open Showmanship, Breeding at 9:00 a.m.
Dairy Goat 4-H/FFA/HYA & Open Showmanship, Breeding at 10:00 a.m.
Senior Recognition at 6:00 p.m.
Tractor Obstacle Course at 12:00 -2:00 p.m.
Clover Bud Program at 6:30 p.m.
and 4-H/FFA/HYA Round Robin at 7:00 p.m.
Greasy Pig Contest
After Greasy Pig Contest will be the Barnyard Olympics for all ages

SATURDAY, JULY 18th

Livestock Judging Contest at 9:00 a.m.
Fairgrounds Water Fun at 1 – 3:00 p.m.
Paying of 4-H/FFA/HYA Premiums (Extension Office) at 2:30-4:30 p.m.
4-H/FFA/HYA Livestock Buyers Dinner at 5:00 p.m.
Pledge of Allegiance & National Anthem at 5:45 p.m.
Presentation of Awards at 6:00 p.m.
4-H/FFA/HYA Premium sale at 7:00 p.m.
Exhibits Released at 10:00 p.m. (or earlier by announcement of 4-H Agent)

98th Annual Premium List
Cherokee County American Legion
Free Fair & Reunion
Held in conjunction with Soldiers & Sailors Reunion
July 14th – July 18th, 2026
A Bit of History

The American Legion Cherokee County Fair started in 1928. Before 1928 there was two events the County Fair, which was held in the City Park annually. The American Legion Soldiers & /Sailors Reunion, held each year on the present fair grounds. The powers to be from both events decided it would be best to combine the two events into one big celebration and since the American Legion had the property big enough to hold an event that large, it was decided to hold it on their property. That's how the County Fair of today came about starting in 1928.

Visit us on Facebook @ Cherokee County Fair or
E-mail us at ckcofair@columbus-ks.com & Instagram at [cherokeecountyfair](https://www.instagram.com/cherokeecountyfair)

Cherokee County Fair Office
 100 W. Country Road
 Available July 14th – July 19th
 8:00 am to 10:00 pm
 Year-round call 620-429-3281

Cherokee County Extension Office
 620-429-3849
ck@listserv.ksu.edu

Officers

President – Anne Sharp
 Vice President – David Holmes
 Secretary – Brad Wells
 Asst. Secretary – Gary Drennan
 Treasurer- Aaron Asher
 Veterinarian
 Dr. Kurtis Gregory DVM

Directors

Tony Hodge	Aron Davolt
Adam Ellison	Jessi Cain
Brian Welch	Josie Welch
Gary Gideon	Bennie Capron
Terry North	Mike Colbert
Randall Holding	Larry Ketcher

Honorary Director - Mike Hatfield, Dewey Smith, Steve Davis, Randy Bass,
 Marta Brown

The Cherokee County Fair partners with **Gracefully Managed LLC** for social media management and uses the **Locally Savvy Biz Solutions System** to power its website. Together, these local businesses help keep fair information organized, accessible, and easy to find for exhibitors, sponsors, and the community.

To learn more,

visit www.gracefullymanaged.com or www.locallysavvybiz.com.

Extension Office Agents & Staff:

Kylie Ludwig Family and Community Wellness Agent
Josie Welch 4-H Youth Development Agent
Clayton Lester Agriculture & Natural Resources Agent
Ronda Herrenbruck Office Professional

4-H Leaders:

Glittering Stones

Amanda Walker and Nancy Herrenbruck

Lone Elm Beavers

Ronda Herrenbruck, Felicia Weber, and Taylor Evans

Prairie Ramblers

Randy Holding and Linda Holding

Spring Valley Sparklers

Samantha Hall, and Laura Holmes

Colverbuds

Jayden Ivey and Josie Welch

FFA Advisors:

Columbus – KC Youngblood, **Riverton** – Jacob Larison,

HYA Camp Leader:

Ross King

LIABILITY: *Under Kansas Law, there's no liability for an injury to or death of a participant in domestic animal activities resulting from the inherent risks of domestic animal activities, pursuant to K.S.S. 60-4001 through 60-4004. Exhibitors and associates assume all risks of participating in this domestic animal activity. Exhibitors are responsible to maintain insurance to cover any loss to persons or property which may occur as a result of competition. At no time will the Cherokee County American Legion Fair Association, (CCALFA) assume care, custody, or control of any animals, livestock and/or personal property of the exhibitor. At all times the exhibitor will have full control, custody, and will care, feed, and keep safe his/her animals, livestock, and personal property, all in accordance with the rules and regulations of the Cherokee County American Legion Fair. Exhibitors and others bringing property of any kind upon the Fairgrounds, either as exhibitors or otherwise, do so AT THEIR OWN RISK. No liability shall rise from any supervision over exhibits exercised by the CCALFA or its employees or volunteers, but every precaution will be used to protect such property.*

Appeal & Grievance Committee

An appeal and grievance committee will be appointed by the first weigh in for beef. They will listen to and make decisions concerning all disputes. All appeals must be presented in writing with \$25 Cash to a member of the grievance committee. The money will be refunded if the appeal is upheld, otherwise it will be donated to Fair Board Assoc. The committee will be in effect from the day of market beef first initial weigh in, until the Monday following the conclusion of the fair
2026

Fair Board	1. Brad Wells	2. Terry North
Extension Board	1. Jamie Robinson	2. Ed Stone
Community Person	1. Christian Meyer	

Fair Entry

Open Livestock and 4-H/FFA/HYA Livestock and Non-livestock Entry Forms online @ <http://cherokeecountyksfair.fairentry.com/> DUE JUNE 15th by 4:30 pm Any late entries can be made online June 16th up until June 19th at 4:30pm with a \$25.00 late fee payable to Cherokee County Extension.

Table of Contents	Page
Calendar of Events	1
Fair Board, Extension Staff, Club Advisors	3
Appeal & Grievance Committee, Fair Entry Information	5
Table of Contents	6
Thank You Note and Award Sponsors	8
Contests	13
Fair Information	18
Campers, Dogs, and Golf Cart/ATV Rules	19
Superintendents & Committees	20
Rules for Judges and Open Class Entries	21
General Information & Rules for Both Open and 4-H/FFA/HYA	22
Exhibitor's Duties and Privileges	23
Livestock Health Rules Open and 4-H/FFA/HYA	24
Fairs and Shows, Premium List	25
Department A Open Livestock	
Division A1 Breeding Beef Cattle	27
Division A2 Dairy Cattle	29
Division A3 Dairy Goat	30
Division A4 Meat Goat	31
Division A5 Poultry	32
Division A6 Rabbits	33
Division A7 Sheep	34
Division A8 Swine	35
Quonset Hut	36
Department B Open Crops & Floriculture	
Division B1 Crops, Fruits & Garden	37
Division B2 Floriculture	41
Department C Open Family and Consumer Sciences	
Division C1 Canning	42
Division C2 Culinary	43
Division C3 Sewing & Fancy Work	44
Department D Open Arts, Crafts	
Division D1 Fine Arts	46
Division D2 Special Crafts	47
Division D3 Woodworking	47
Division D4 Lego-Duplo	48
Division D5 Photography	49

Table of Contents	Page
Department Y 4-H/FFA/HYA	52
Fair Entry, General Requirements, Code of Conduct	
Ribbon Premiums, Rules and Liability	53
Market Livestock Rules	
Rules and Regulations for Market Livestock Sale	55
Round Robin Showmanship	56
Division Y1 Beef	57
Division Y2 Dairy Cattle	58
Division Y3 Dairy Goats	58
Division Y4 Dog	59
Division Y5 Horse	60
Division Y6 Meat Goat	62
Division Y7 Poultry	63
Division Y8 Rabbits	64
Division Y9 Sheep	65
Division Y10 Swine	66
Division Y11 Aerospace/Rocketry	66
Division Y12 Agronomy	67
Division Y13 AG Mechanics	68
Division Y14 Astronomy	68
Division Y15 Building Block Engineering	69
Division Y16 Computer Science	70
Division Y17 Electric & Renewable Energy	70
Division Y18 Entomology	72
Division Y19 Fiber Arts	73
Division Y20 Foods & Nutrition	74
Division Y21 Food Preservation	75
Division Y22 Forestry	77
Division Y23 Geology & Lapidary	78
Division Y24 Horticulture & Landscape Design	80
Division Y25 Interior Design & Architecture	81
Division Y26 Photography	81
Division Y27 Robotics	83
Division Y28 Sewing & Textiles	83
Division Y29 Shooting Sports	84
Division Y30 Shopping in Style (Fashion Revue)	84
Division Y31 Small Engines	85
Division Y32 Uncrewed Aircraft Systems	86
Division Y33 Veterinary Sciences	86
Division Y35 Wildlife	87
Division Y36 Woodworking	88
Division Y37 Leadership	88
Division Y38 Self-Determined	89
Division Y39 Reading Adventures	89

THANK YOU NOTE

The American Legion Cherokee County Fair Board wants to express their appreciation to the businesses and individuals that help support the Cherokee County American Legion Free Fair through sponsoring trophies, placing fair book ads, banners, buying livestock premiums, attending events, volunteering and providing other support to fair activities.

Please take the time to recognize these fair supporters' commitment to the youth of Cherokee County and the fair itself.

Thank you to the parents of the participants, the Extension staff for making this year's fair a great success. A special thanks goes out to all the exhibitors, because without your participation it would not be possible.

We would also like to say a Big THANK YOU TO THE FOLLOWING:

City of Columbus

Council

Police Department

Fire Department

City Maintenance

Cherokee County

Commissioners

Sheriff Office

EMS

County Road and Bridge

Emergency Management

2025 Premium Auction Supporters

Crossland Construction - GC Market Beef - shown by Cole Youngblood

Sally Davis Real Estate & Callee Henson Memorial - GC Feeder Calf - shown by Samantha Ohmart

Jay Hatfield Auto Group - GC Market Swine - shown by Jaxon Harper

Draeger Farms & Columbus Vet Clinic - GC Market Meat Goat - shown by Easton Haywood

Herron Regional Dental - GC Market Sheep - shown by Emma Duling

Clearway Energy/Rainbow Springs Solar - GC Meat Rabbit - shown by Joshua Brown

American Bank - GC Broiler - shown by Kinsley Hess

Ag Choice Weir

American Bank

Callee Henson Memorial

Cherokee County Fair Association

Cherokee County Farm Bureau

Chip & Ronda Herrenbruck

Clearway Energy/Rainbow Spring Solar

Coal Valley Processing

Coffeyville Stockyard

Columbus Veterinary Clinic

Commerce Bank

Country Agency Crop INC

Craw-Kan Telephone

Crossland Construction

Crossland Heavy Contractors

David Homes Auctioneering

Davis Real Estate

Dr. Mindy Mayfield Veterinary Clinic

Draeger Farms

Exchange State Bank

Farmer's Cooperative Association

Hank Hildebrandt Plumbing

Harrington Cattle Company

Heather Sapp CK CO Treasurer

Herrenbruck Family, in memory of
 Charlie & Chris
 Herron Regional Dental
 Jay Hatfield Auto Group
 Jay Hatfield Motorsports
 Jessee Farms
 Joplin Regional Stockyards
 Labette Bank
 Longtail Farms
 Mary & Mary Teel

Mid American Pipe
 Mike Carpino Ford
 Optic Communications
 Oswego Locker
 Pete's Convenience Store
 Producers Cooperative Association
 Shelly Hildebrandt Cobb Realty
 Stone Brothers Farms
 Tony Hodge
 Torchia-Holmes Real Estate

We would also like to thank those listed below who purchased items from our 2025 Dessert

Bill Harrington
 Brian Henderson
 C4 Farms
 Chad Smith
 Chip & Ronda Herrenbruck
 Cherokee CO Democratic Party
 Davis Construction
 Davis Real Estate
 Harold Depenbusch
 Heather Sapp
 Jane Houser
 Jerry Seely

Jimmy Hendry
 Kathy Hess
 Keith & Carla Karsten
 Kenny & Macy Herrenbruck
 Larry Hiatt
 Myra Carlisle Frazier
 Optic Communications
 Peyton Herrenbruck
 Pride Amusements
 Root Family
 Scott Perry
 Team Thread

Thank you to

Premium Sale auctioneers Jack Garner, David Holmes, & J.B. Robison

Dessert auctioneers Tom Wimmer & Jerry Murray and everyone who worked to make both the sales run smoothly and successfully.

2025 Fair Award Sponsors

Thank you so much for your sponsorship to Cherokee County 4-H.

4 Walk Farms – Jason & Mandy Walker – Intermediate Grand Dairy Goat Showmanship
 4 Walk Farms – Jason & Mandy Walker – Junior Grand Dairy Goat Showmanship
 4 Walk Farms – Jason & Mandy Walker – Junior Grand Dairy Cattle Showmanship
 4 Walk Farms – Jason & Mandy Walker – Grand Leadership display poster
 4 Walk Farms – Jason & Mandy Walker – Intermediate Grand Girls Buymanship
 4-H Council – 1st attendant boy
 4-H Council – 1st attendant girl
 Albert & Josie Welch Family – Grand Photography Poster Display
 American Legion Cherokee County Fair Board – Grand AOB Beef
 American Legion Cherokee County Fair Board – Grand Crossbred Beef
 American Legion Cherokee County Fair Board – Supreme Dairy Cattle Female
 American Legion Cherokee County Fair Board – Supreme Meat Goat Female
 American Legion Cherokee County Fair Board – Grand Bantam
 American Legion Cherokee County Fair Board – Grand Large Fowl
 American Legion Cherokee County Fair Board – Grand Market Broiler Pen
 American Legion Cherokee County Fair Board – Grand Pigeon

American Legion Cherokee County Fair Board – Grand Waterfowl
American Legion Cherokee County Fair Board – Supreme Rabbit
American Legion Cherokee County Fair Board – Grand Gilt
American Legion Cherokee County Fair Board – Grand Duroc
American Legion Cherokee County Fair Board – Grand Crossbred swine
American Legion Cherokee County Fair Board – Grand Breeding Ewe
Andy & Dusty Herrenbruck Family – Grand Pony
Anne Sharp – Bucks Green Thumb
Anne Sharp – Buck's Top Showman
Anne Sharp Family – Grand Level 2 Rally Obedience
Anne Sharp Family – Grand Level 1 Obedience
Anne Sharp – Advanced Overall Dog - In Memory of Charles (Chuck) Sharp
Anne Sharp – Beginning Overall - In Memory of Charles (Chuck) Sharp
Anne Sharp – Intermediate Grand Dessert – In Memory of PA (Paula Andrews)
Anne Sharp – Intermediate Grand Main Dish – In Memory of PA (Paula Andrews)
Anne Sharp – Intermediate Grand Side Dish – In Memory of PA (Paula Andrews)
Bennie & NaCole Capron – The Extra Mile Award
Bob Brassart Family – 4-H Queen Tiara
Bob Brassart Family – Intermediate Grand Clothing Construction Style Revue
Bob Brassart Family – Intermediate Grand Boys Buymanship
Brian Henderson, Cherokee County Sheriff – Grand Building Block Engineering
Charlie & Nancy Herrenbruck – Junior Grand Beef Showmanship
Charlie & Nancy Herrenbruck – High Point Boy Performance 13 & under
Charlie & Nancy Herrenbruck – Grand 8 years or more B&W photo
Charlie & Nancy Herrenbruck – Grand Self-Determined
Cherokee County Livestock Improvement Association (CCLIA) –Rate of Gain Feeder Calf
Cherokee County Livestock Improvement Association (CCLIA) –Rate of Gain Market Beef
Cherokee County Livestock Improvement Association (CCLIA) –Rate of Gain Market Goat
Cherokee County Livestock Improvement Association (CCLIA) –Rate of Gain Market Lamb
Cherokee County Livestock Improvement Association (CCLIA) –Rate of Gain Market Swine
Chip & Ronda Herrenbruck – Senior Grand Sewing
Chip & Ronda Herrenbruck – Senior Grand Bread
Chip & Ronda Herrenbruck – Top Ticket Salesperson
Christian Meyer – Best Bird In Show
Clark Hall Family – Junior Grand Swine Showmanship
Clark Hall Family – Dale Hall: Helping Hands Award
Columbus FFA – Grand Ag Mechanics Small Project
Columbus FFA – Reserve Ag Mechanics Small Project
Columbus News Report – Grand Agility I Novice
Columbus News Report – Grand Pre-Agility
Country Styles Dog Grooming (April Henderson) – Grand Market Meat Rabbit Pen
Daisy Mooney & Sue Drennan – Intermediate Grand Arts & Crafts
Debbie French Shear Best Salon – Grand Miniature Horse
Dennis & Daisy Mooney – Junior Grand Dessert
Derek & Christina Holmes – Junior Grand Bread
Eddie & Raven Youngblood Family – Senior Grand Clothing Construction Style Revue
Eddie & Raven Youngblood Family – Senior Grand Girls Buymanship
Eric Underwood – Junior Grand Poultry Showmanship
Farmer's Cooperative Association – Grand Market Beef
Farmer's Cooperative Association – Grand Market Meat Goat
Farmer's Cooperative Association -- Round Robin Intermediate
Farmer's Cooperative Association – Round Robin Senior
Farmer's Cooperative Association – Grand Market Lamb
Farmer's Cooperative Association – Grand Market Swine
Galen & Rhonda Zook – Senior Grand Horse Showmanship
Galena Nursing Center – Grand Canning
Galena Nursing Center – Grand Floral Arrangement

George McKee Memorial – High Point Boy Performance (Horse)
 George McKee Memorial – High Point Girl Performance (Horse)
 Glittering Stones 4-H Club – Live Like Callie Award, In memory of Callie Henson
 Glittering Stones 4-H Club – 4-H Family of the Year Award in memory of Charlie Herrenbruck
 Hank Hildebrandt Plumbing, Drain, and Excavating – Junior Grand Sewing
 Hank Hildebrandt Plumbing, Drain, and Excavating – Junior Grand Clothing Construction Style Revue
 Hank Hildebrandt Plumbing, Drain, and Excavating – Intermediate Grand Swine Showmanship
 Hank Hildebrandt Plumbing, Drain, and Excavating – Grand Hampshire
 Harold Depenbusch Family – Junior Grand Visual Arts
 Harold Depenbusch Family – Senior Grand Visual Arts
 Harrington Cattle Company – Intermediate Grand Sewing
 Hart/Jarrett Family – Most Improved in Dog – In memory of Jacey Westervelt
 Hart/Jarrett Family – Most Improved in Horse – In memory of Jacey Westervelt
 Hart/Jarrett Family – Most Improved in Horse – In memory of Jacey Westervelt
 Heather Sapp Cherokee County Treasurer – Champion Pony Timed Events
 Jack Garner Ck Co District 2 Commissioner – Grand Fiber Arts
 Jamie Walsh – Senior Grand Dairy Cattle Showmanship
 Jeff & Kelly Karsten – Older Age Group Tractor Obstacle
 Jeff & Kelly Karsten – Younger Age Group Tractor Obstacle
 Jeff Martin Family – Supreme Beef Female – In Memory of Mae Simpson
 Jeff Martin Family – Grand Rocketry
 Jerry Seely – Senior Grand Dog Showmanship
 Jerry Seely – Champion Timed Events 13 & Under
 Jerry Seely – Intermediate Grand Horse Showmanship
 Joe Mooney Family – Justin Mooney Memorial Award
 Justice Farms – Grand Gelding
 Justice Farms – Grand Mare
 Karen Johnston Ck Co Register of Deeds – Junior Grand Dog Showmanship
 Karen Johnston Ck Co Register of Deeds – Intermediate Grand Dog Showmanship
 Karen Johnston Ck Co Register of Deeds – 4-H King Hat
 Karen Karsten & Family – Senior Grand Main Dish
 Kathy Wright – Junior Grand Rabbit Showmanship
 Kylie Ludwig – Grand Geology Exhibit
 Kylie Ludwig – Grand Reading
 Lauren and Chris Ferris – High Point Girl Performance 14 & Over (Horse)
 Lauren and Chris Ferris – High Point Boy Performance 14 & Over (Horse)
 Logan's Horseshoeing – Grand 4-7 years in Project Color Photo – In Memory of Sean McCune/Girard Young Farm Men – 4-H King Gift bag
 McCune/Girard Young Farm Women – 4-H Queen Gift bag
 Merle Ross Family – Grand Feeder Calf
 Merle Ross Family – Reserve Feeder Calf
 Miles Reeves – Junior Grand Main Dish
 Rocky & Pam Overman–Junior Grand Girls Buymanship–In Memory of Don & Betty Schoech
 Peyton Herrenbruck – Grand Pre-Novice Obedience
 Phillip Underwood – intermediate Grand Poultry Showmanship
 Primo Feeds – Grand Market Hog Banner
 Primo Feeds – Reserve Grand Market Hog Banner
 Rafter T/ Tracy Parsons – Intermediate Grand Sheep Showmanship
 Rand Sapp Family – Grand Novice Obedience Dog
 Randy & Linda Holding – Intermediate Grand Rabbit Showmanship
 Randy & Linda Holding – Senior Grand Rabbit Showmanship
 Rick & Laura Atkinson – Senior Grand Dairy Goat Showmanship
 Rick & Laura Atkinson – Reserve Supreme Rabbit

Riverton FFA – Grand Ag Mechanics Large Project
 Riverton FFA – Reserve Ag Mechanics Large Project
 Rocking H7 – Jake & Sammie Hall – Champion Timed Events 14 & Over
 Rocking H7 – Jake & Sammie Hall – Pony High Performance High Point
 Ronda Herrenbruck & Ragena Duling Families – Grand 3 years or less in Project
 B&W Photo – In Memory of Sherry Clark
 Ronda Herrenbruck & Ragena Duling Families – Grand 3 years or less in Project
 Color Photo – In Memory of Sherry Clark
 Ronda Herrenbruck & Ragena Duling Families – Grand 8 years or more in Project
 Color Photo – In Memory of Sherry Clark
 Ronda Herrenbruck & Ragena Duling Families–Grand Potted Plant–
 In Memory of Quinn Clark
 Ronda Herrenbruck & Ragena Duling Families – Grand Crops – In Memory of Quinn Clark
 Sally Chubb Memorial – Intermediate Grand Dairy Goat showmanship
 Sally Chubb Memorial – Supreme Dairy Goat Female
 Schultz Brother's Farm – Reserve Bucket Calf
 Schultz Brother's Farm – Reserve Market Beef
 Shank's Cattle & Hay – Intermediate Reserve Round Robin
 Shank's Cattle & Hay – Senior Reserve Round Robin
 Steve and Diane Allen – Grand Floriculture
 Steve Scott Family Memorial – Intermediate Grand Beef Showmanship
 Stone Brothers Farm, LLC – Senior Grand Beef Showmanship
 Stone Brothers Farm, LLC – Senior Grand Side Dish
 Team Outfitters – Intermediate Grand Goat Showmanship
 Team Outfitters – Junior Grand Sheep Showmanship
 Team Outfitters – Junior Grand Boys Buymanship
 Team Threads – Junior Grand Goat Showmanship
 Team Threads – Senior Grand Goat Showmanship
 Team Threads - Junior Grand Horse Showmanship
 Team Threads – Senior Grand Sheep Showmanship
 Team Threads – Senior Grand Swine Showmanship
 Terry & Sarah North – Junior Grand Woodworking
 Terry & Sarah North – Senior Grand Woodworking
 The Herrenbruck Brothers (Kenny & Peyton) - Senior Grand Dessert
 The Jacob & Michele Weber Family – Grand Garden
 Valori Stone – Junior Grand Side Dish
 Valori Stone – High Point Girl Performance 13 & Under Horse
 Valori Stone – Grand 4-7 years in project B&W Photo
 Van & Tara Underwood – Senior Grand Poultry Showmanship

Contests

Photo for next year's Fair Book Cover

The Fair Board will collectively decide on a 4-H/HYA/FFA or Open photograph entered into the current year's fair to use as the front cover of the fair book for the following fair year. Fair Arm Band or cash value for early arm band sale, will be awarded. your name, club will be displayed in the front cover of the fair book for accreditation. If we do not find a photo that we feel will work the Fair Board will create one.

Contests

George D. Sharp Family Memorial Greasy Pig Contest

The George D. Sharp Memorial was started in honor of George Sharp by the American Legion Fair Board. George was a big supporter of the Swine Project. He along with his children and grandchildren raised and showed swine for many years. His great-grandchildren still show today. Charles (Chuck) Sharp served as Swine Superintendent for many years. Charles (Buck) Sharp served as 4-H Project Leader for Swine for many years and a Fair Board Member. They are also remembered in this contest.

Today we have many Sponsors that have been added on.

2025 Sponsors

Bub's Mobile Equipment \$250

Bobby and Shelley (Sharp) Mitchell \$100 and 4 bags of pig feed (2 bag of feed per winner),

Charles Issac Sharp \$200.00

Jake and Jessi Cain \$100

American Legion Fair Board \$75

Gary and Amy Gideon \$50

The greasy pig contest will be held following the Round Robin Fitting & Showing and before barnyard Olympics on Friday Evening in the show arena.

1. There will be two runs 7-9 years old, and 10-13 years old as of the day of the contest.
2. As soon as one captures the pig, other contestants must stay away. In case of a tie, a runoff will be held between the tied contestants.
3. Whoever catches the pig in both runs must wash it immediately following the contests.
4. The lucky winners IS NOT allowed to wash off in the 4-H restrooms when they are finished nor are any of the other contestants!

Note: Winner of the greasy pig contest will purchase a weaning pig prior to Initial weigh-in and must show that pig at the next Cherokee County fair. Submit a bill to the American Legion Fair Board, at initial weigh-in. The Fair Board will reimburse the winner their portion of prize money. COOP will be notified of the winner to get their 2 bags of feed each.

Previous winners are not allowed to enter again in either age group.

2023 Winners

7-9 years old Mason Worden

10-13 years old Andrew Low

2024 Winners

7-9 years old Jackson Cain

10-13 years old Trever Lacen

2025

7-9 years old Isaac Zahm

10-13 years old Jackson Harper

4-H King & Queen Contest

1. A 4-H King & Queen Contest will be sponsored by the Cherokee County 4-H Council.
2. Each club will select a King & a Queen to represent their club.
3. The King, Queen, and their first attendant will be selected by selling the most dollars-worth of tickets per member.
4. All proceeds derived from the sale of tickets must be turned into the Extension Office on or before 4:30 pm MONDAY of Fair week.

5. Any money turned in after the deadline will not apply toward the selection of the Fair King & Queen and the attendants.
The coronation will occur Wednesday, of Fair week before the Fair Buddies Sheep & Goat Show, at the show arena.

The Fair Association 4-H/FFA/HYA Daily Herdsman Award, Premier Exhibitor, and Premier 4-H Club, FFA Chapter, and HYA Award (Group Award)

The purpose of these awards is to promote neatness and cleanliness of stalls, alleyways, and livestock in the exhibit barns during the County Fair. Safety of visitors while in the barns, as well as exhibitors and livestock, will be emphasized. A special committee will rate livestock exhibits on a 4-H club, FFA chapter, and HYA basis during the fair. This committee will visit the livestock barns at least once a day, unannounced to evaluate each individual's animals and exhibit area. Individual exhibitor ratings will be grouped on a club or chapter basis to determine a final rating. The judging of the exhibits by committee will be based primarily on cleanliness of alleys, stalls, pens, arrangement of exhibits, neatness, appearance of animals, stall cards and attendant, and education to the public about their exhibit. Please note this is a snap shoot judging. Meaning what it looks like when the judge(s) are doing the judging.

Daily Herdsman Award

\$5.00 daily for each species of Beef, Dairy Cattle, Dairy Goat, Meat Goat, Sheep, Swine, Poultry, and Rabbits

TO QUALIFY FOR Daily HERDSMAN AWARDS

1. Name of club, member, and animal properly identified on stall cards.
2. Clean bed stall, pen or area. Cleaned of manure, no tack left in stalling or pen area.
 - a. Poultry and Rabbits: Water and feed may remain in pen. Check to see that the feed and water are clean. Area under pen should be kept clean.
 - b. Hogs: Feed pans may be kept in pens if fastened to the gate/pen.
 - c. Cattle: Tied properly as not to step into the aisle area or tangle with other calf. No feed pans, water maybe left in, but needs to be clean.
 - d. Sheep and Goats: Feed pans may be left in the pens if attached to the side of the pen, and water may be left if it is clean.
3. Animal(s) appearance is clean and groomed.
4. Have knowledge of animals, age (birth date) breeding, weight and etc. as needed for registration or judging.
5. Show respect - consideration - proper attitude and cooperation toward ALL animals, members, equipment, supplies and facilities as well as judges and spectators.
6. When exercising or taking your animal in and out of the building, clean up after them.
7. Will check with the species Superintendent to make sure they are taking care of their animals.

Award for Premier Exhibitor Banner for 4H/FFA/HYA

Will be provided by the Fair Board. Entries in each species of Beef, Dairy Cattle, Dairy Goat, Meat Goat, Sheep, Swine, Poultry, and Rabbits. To the showman based on numerous factors. (Winning a Daily Herdsman Award, placing in Showmanship, Market and

Breeding, may include other factors that the Fair Board deem appropriate) If a tie then will use the Approachability and Knowledge of the Exhibitor. The premium for each specie winner will be \$25. Banners and money will be awarded Saturday. Selection will be based on the following criteria:

Will be scored as follows	Points
Daily Herdsman	5
Showmanship, Market and Breeding Placing	Points
Grand Champion	10
Reserve Champion	7
1st Place or (Blue)	5
2nd Place or (Red)	4
3rd Place or (White)	3
4th Place	2
5th Place	1
In case of a tie then	
Approachability and Knowledge of Exhibitor	5

Premier 4-H Club, FFA Chapter, and HYA Award (Group Award)

Members must designate the 4-H Club, FFA Chapter, or HYA they belong. This will be done when you enroll to show in that class. Selection will be based on the following criteria.

The Premier Group Award combines the Premier aspect and the Herdsmanship to the whole group. Herdsmanship is important to the public image of agriculture, your club/chapter, and your family!

Herdsmanship helps youth learn skills in making a presentable exhibit for the public as well as learn skills in courtesy, cooperation, neatness and proper care of animals. Thank you for all your hard work, dedication and commitment to making the American Legion Cherokee County Fair a success! Let's make this the best year yet!

Notes About Premier Group Award:

1. Judging will take place on Tuesday-Friday between 9 am and 9 pm by one or two qualified individuals.
2. On show day, no judging will take place during your show (window of time 2 hours prior and 2 hours after end of show).
3. Premier Group Award will be handed out on Saturday night during the awards presentation.
4. All ties will be broken by the Livestock Superintendents and/or Judge(s).
5. Score sheets will be returned to club leaders after the fair. Clubs should think about how to improve in areas where points have been deducted.

Prizes:

The top group in the Livestock Division will receive a cash award of \$50.00 to recognize their group participation and achievement.

Herdsmanship	
Preparation of Exhibit (30 pts)	Points
Adequate Bedding	10
Bedding is clean, appropriate for species, free of waste & manure.	
Animals Attractively Arranged	5
Animals are in the appropriate area and are secured in their pens.	
Decorations Neat & Attractive	5
Pen Decorations are clean, easily identifiable, and appropriate for species.	
Stall/Pen Sign for each animal	10
Each sign has name, information, and details about each animal.	
Appearance & Attitude (20 pts)	
Knowledgeable	5
Exhibitors can answer questions about their animals.	
Exhibitors Physical Appearance	5
Exhibitors are appropriately dressed, and behavior is appropriate for the barn.	
Present & Responsible	5
Exhibitors are in the barn, responsible for themselves & animals, and taking care of exhibit & area.	
Sportsmanship (respectful, polite)	5
Exhibitors show respect & courtesy to fair-goers, parents/family, and other members.	
Care of Animal (30 pts)	
Animals clean & well groomed	15
Animals are brushed, clean, and have been appropriately groomed for species.	
Animal health & comfort	15
Animals appear to be health and comfortable. Any water present is clean.	
Group Appearance (20 pts)	
Group Signage is Attractive	10
Group area identification sign is noticeable, easy to read and in good shape.	
Group Area is Clean & Neat	10
Group area is free of debris, and looks clean. Feed, tack, and bedding are stored appropriately.	
Total Points	100

Premier

Market	Points
Grand Champion	10
Reserve Champion	7
1st Place	5
2nd Place	4
3rd Place	3
4th Place	2
5th Place	1
Showmanship	
Grand Champion	10
Reserve Champion	7
Breeding	
Grand Champion	10
Reserve Champion	7
Member wins Daily Herdsman	5
Member wins Premier Exhibitor	5



So You Missed The Wagon?
 Call today to get your ad in next years
Annual Cherokee County Fair Book!
 Call David at **620-674-2183**

Kansas Fair Association Hall of Fame Members:

The late Joe Cook,
The late W.W. (Wally) Hall
The late Raymond Taylor
Retired Secretary Terry North

CHEROKEE COUNTY AMERICAN LEGION FAIR

Operating under the guidance of the Cherokee County American Legion Fair Association, the fair is an institution for all cities and residents of Cherokee County. Established by Kansas Law, upon a park owned by the Fair Association and Keith Reeves Post No. 3, it is held in the interest of better community life and is supported by taxes paid in our County. **Dedicated to agriculture, as well as education and growth of youth and adults.** It helps us to become better acquainted with friends and neighbors, providing an opportunity for us to grow as a community.

OPEN & 4-H/FFA/HYA RULES

NOTE: Regulations for Open & 4-H/FFA/HYA Exhibits are subject to change. **All announcements in newsletter, Facebook or newspaper take precedence if changes have occurred after fair book has been taken to the printer.** All changes must be approved by the Fair Board and Extension Office. Each club member is encouraged to exhibit his/her projects at the local county fair.

EXHIBIT SOMETHING

The fair will mean much more to you if you exhibit something in which you take personal pride and would like others to see. Please be advised that the Kansas State Fair only allows 4-H and FFA members to show in their shows at the State Fair. You have the ability to show under the following organizations at this County Fair:

- 4-H** The goal of 4-H is to develop citizenship, leadership, responsibility and life skills of youth through experiential learning programs and a positive youth development approach. Though typically thought of as an agriculturally focused organization as a result of its history, 4-H today focuses on citizenship, healthy living, science, engineering, and technology programs.
- FFA** Is an agriculture-based school. A career and technical student organization, based on middle and high school classes that promote and support agricultural education. Columbus, Riverton and Southeast School districts offer the program for youth in our County at the high School level.
- HYA** A youth development organization focused on encouraging personal growth, strong relationships with others, diligence in work, citizenship, stewardship, and ethical standards founded in the values and traditions held by our forefathers.
- Open** Is open to anyone (Adult, Youth) that wants to show. Must follow the rules set for that show.

We also showcase 4-H Cloverbud Program

The Cherokee County 4-H Cloverbud program is a non-competitive group of 5- and 6-year-old. We learn the colors of 4-H and what the 4 "H's" stand for. We also learn the club pledge. We break down parts of a meeting and we learn each position. We learn the different taps of the gavel and what they mean. We learn the difference between "old" and "new" business. We add and change jobs each

month and by June and July the kids can conduct an actual business meeting. The kids have a time slot during the fair to showcase a project and we have a table in the 4-H building to display crafts that we have done throughout the year. We have lots of fun learning and doing community service. For more information contact Cherokee County Extension at 620-429-3849. Cloverbuds building a strong foundation for our future clubs.

CAMPERS

Camping spaces will go as follows; Anyone with a camping space the last year can claim the same spot for this year by May 29. Space must be reserved and paid for by May 31 of the current year. A \$70 fee (payable to the American Legion Fair Board) which can be left at the Extension Office. **All camping space not reserved by then will become open on June 1 of the current year \$70 fee (payable to the American Legion Fair Board.** *Due to the limited amount of space available they will be sold for placement of a tent or camper only. Tents not using electric will pay \$20. (Fair Board 4-03). 2 parking passes will be provided with each spot.

A fire lane will be marked off through the camping area. There will be no parking in the fire lane. This will be a tow away area at the owner's expense. If you do not have room to park your vehicles in your camping area then you need to park someplace else. No campers allowed before the Friday before fair at 5p.m.

DOGS ON FAIR GROUNDS DURING FAIR WEEK

1. Pets are allowed only in the immediate vicinity of your camper and must be on a leash. No dogs, cats, or other pets, with the exception of Assistance Dog shall be permitted on the rest of the Fairgrounds this includes the livestock areas. Pet owners are responsible for cleaning up after their animal and placing the waste in a trash receptacle.
2. Also show dogs in the 4-H/FFA/HYA Dog Show, are allowed only on day of the show and they must be on leash.

GOLF CARTS AND /OR ATV'S POLICY

Please be smart when operating a golf cart/ATV. Anyone caught not following rules will have their privileges revoked and be removed from the fairgrounds. Follow the manufacturer's specifications on the golf cart/ATV.

1. Exhibitors must register golf cart/ATV at the American Legion Fair Office before using. Permits will be available starting Monday of the Fair week.
2. The Fair Office will need a photo copy of the driver's license of the owner of the golf cart/ATV and photo copy of insurance. Each golf cart/ATV will be given a permit to be displayed on the vehicle.
3. Golf carts/ATV's are to be used in the exhibit area only, to and from stock trailer and livestock barns, or to your destination when hauling cargo. Vehicles will not be permitted on the midway or in the barns.
4. **Operating hours will be between 6:00 AM - 6:00 PM then 9:30 PM - 11:30 PM No golf carts/ATV will be allowed to operate during public viewing time from 6:00 PM – 9:30 PM. Exception is made for Fair Staff or Emergency Staff and a personal Handicap Cart.**
5. All golf carts/ATV must have head lights and tail lights ON to operate after dark.
6. The owner of the golf carts/ATV will be responsible for the operator, passenger and cargo being hauled at all times.
7. **DRIVERS MUST BE 14 YEARS OF AGE OR OLDER.**
8. **RACING OF ANY KIND WILL NOT BE ALLOWED.**

9. THE CHEROKEE COUNTY FAIR ASSOC. IS NOT RESPONSIBLE FOR THE FOLLOWING:
 - a. ANY DAMAGE OR THEFT OF THE GOLF CART OR ATV.
 - b. ANY HUMANS OR ANIMALS INJURED THAT OCCURRED DURING THE OPERATION OF A GOLF CART OR ATV.

If you exhibit, you'll be there to see how your contribution looks compared to others and others will be there to do the same. The Fair Board will get some new ideas and information as to how we may make an improvement, and thus have a successful fair. All exhibits entered at the Cherokee County American Legion Fair are entered and displayed at the risk of the exhibitor. Any exhibit accepted will be provided due care to protect them. However, the Fair Board or Extension Council/Staff cannot accept responsibility for loss or damage due to conditions which may be imposed by large crowds, arrangement of buildings or barns in which displays are housed, and the number of exhibits. Anyone who has exhibits of great sentimental and/or monetary value should carefully consider whether such exhibits should be exposed to the hazards of fair.

Fair Superintendents & Committees

This group is in charge of the daily operations of the departments and report to the secretary of the Fairboard and/or 4-H agent. They are backed up by their individual committees. Superintendents are picked at the direction of the Fair Board. Superintendents and Committees are listed at the top of the department they are in charge of.

Superintendents – Rules

1. Every article or animal on the grounds shall be under the control of the association, and while every precaution will be taken for the safekeeping of the same, neither the association, its officers, or agents, will be responsible in any case of loss, damage, or accidents that may occur.
2. To be eligible for competition, whether single or group, animals must be the bona fide property of exhibitors and all animals entered for competition, except when otherwise specified it must be owned by the exhibitor prior to making entry. Should any be otherwise entered they will forfeit any premiums awarded by the judges.
3. The board of directors reserves the right to withhold premiums awarded in cases where it shall appear that the regulations have not been complied with or that fraud or deception has been practiced or attempted.

Before the Fair

1. Each superintendent of a department shall direct the arrangement for all entries or animals on exhibition in his/her departments.
2. With the help of the Extension Office put the livestock show in order. Have entry books put together and ready to go before the show. Non-livestock shows books are done mainly by Extension Office you may need to help if asked.

The Day of Judging

1. Make sure that the judge has all the supplies needed for judging- ribbons, scorecards, clipboard, pencils. Water if needed.
2. Watch for the judge and welcome them. Take them to the area they will be judging.
3. Make sure the judges know any special awards and the criteria they are to use.
4. Monitor judging to see if judge are:
 - a. Moving at an acceptable pace.
 - b. Providing positive, constructive feedback.
 - c. Adequately questioning youth
5. Verify the completeness of all judge's rating and awards. Ribbon placing for each exhibit should be carefully recorded for awarding of premiums. You or another committee person may do this.

When Judging is Finished

1. Ask if the judges had general comments for improvements- to pass along to youth about their projects or about the way the show was organized.
2. Be sure to thank the judges for their time.
3. Escort judges back to the Fair Office so they may collect their check from the Fair Board. Again, thank them for their time and expertise, and encourage them to enjoy the other aspects of the fair.
4. Each superintendent of exhibits is charged with caring for and returning entry books of his/her department, with the awards of each animal or article duly and properly entered therein and each award signed by him/herself and the judges who make the awards, as it is upon his record only that premiums can be paid.

RULES TO BE OBSERVED BY JUDGES IN THE ARENA OR WHILE JUDGING

No one shall act as judge who is related to any person competing for a premium. If any exhibitor files with the Superintendent a written statement that the judges or any awarding committee have been interfered with the performance of their duties, by a false statement, by a letter or circular or otherwise, or that one of the judges is related to the successful competitor, or have been directly or indirectly interested in the case in which he/she acts as committeeman, it shall be the duty of the board to withdraw premium until all the facts have been submitted to the board of directors.

1. During the exhibition in the arena no person will be allowed inside the arena except the judges, ring stewards and members of the board of directors, and parties in charge of the stock.
2. Exhibitors are not permitted to address the judge (unless spoken to by said judge while he/she is in performance of his duties).

OPEN CLASS ENTRIES

All classes and departments are open to entries from all counties and stated as open, except 4-H/F.F.A./HYA Departments. The exceptions for these departments are listed in the rules under the specific departments.

ALL OPEN LIVESTOCK ENTRIES.

All registered open livestock tattoos and registration papers will be checked after 10:00 a.m. on Tuesday, July 14th. A time and designated place will be posted. All entries will be guaranteed space. All open entries may be removed at 10:00 a.m. Saturday, July 18th.

GENERAL INFORMATION AND RULES FOR BOTH OPEN AND 4-H/FFA/HYA

1. The Cherokee County American Legion Fair Association reserves to its board of directors the final and absolute right to interpret these rules and arbitrarily settle and determine all matters, questions, and differences in regard to or otherwise arising out of or connected with our incident to the fair.
2. Profanity &/or unethical behavior will not be tolerated on fairgrounds. Criticizing or interfering with the judge, other exhibitors, show officials or fair board members before, during, or after the event may result in an individual or group being expelled, placed on probation, declared ineligible or barred from the fair.
3. Copyright Laws Exhibitors should learn the guidelines and exercise caution when using copyrighted materials whenever possible by originating their own work. Exhibitors should use with caution a copyrighted and/or trademarked product or service (a brand name, label or product). A copyright and trademark are legal methods used by writers, artists, corporations and others to protect their original work. Protected items may range from books to music, logos to computer graphics. Copyrighted and/or trademarked materials used in displays, demonstrations, posters or other activities will be disqualified if the exhibitor does not acquire permission to use the copyrighted and/or trademarked materials and will not be displayed or receive ribbons. The use and inclusion of specific brand names for educational purposes does not imply endorsement or refusal by the Department of 4-H Youth Development, Kansas State University Agricultural Experiment Station and Cooperative Extension Service of the State of Kansas.
4. Fair Board may use KS State Fair Rules as a guideline, but reserve the right to set the rules for our fair.
5. No machinery is allowed inside the barns except for use by members of the Fair Board.
6. All livestock trucks and trailers left over 24 hours must be parked in designated area, on the rodeo grounds.
7. Every animal entered in competition for prizes must be owned by the exhibitor unless shown in a group.
8. Competition for Championship honors must be limited to the first and second winners in the individual classes.
9. Entries must be made in every class in which the animal is to be shown, either as an individual or as a member of a herd group or pair, except in the case of championships.
10. **No animal can be entered in more than one individual class in each show (Open or 4H/FFA/HYA).**
11. Any person making a false entry or misrepresenting his animal as to age, or any other manner, will forfeit any prize that may have been awarded and will be excluded from all competition.
12. No premium shall be awarded to any animal or article that is unworthy. In case there is no competition, only one prize may be awarded and this shall be determined by the judge on merit and over his signature.
13. Every rule in the premium list will be strictly adhered to and no exceptions.
14. The Annual Fair of the Association will be held July 14th – July 18th inclusive, unless postponed or extended by the management which hereby reserves the right to do so, for any case or causes whatsoever deemed necessary for the good of all parties concerned.
15. No disorderly conduct of any kind will be permitted. Law Enforcement will be on the grounds sufficient to see that all rules are obeyed.
16. No persons will be allowed in the Exhibit Buildings during judging except judges and Fair Officials.

17. All Livestock, poultry, and rabbit exhibitors will be responsible for caring for their exhibits.
18. All cooling systems will be provided by the fair board. No personal fans, coolers, misters, or foggers will be allowed unless voted and approved by the fair board.
19. **No animals shown in 4-H/FFA/HYA market classes will be allowed to show in open or 4-H/FFA/HYA breeding classes the same year.**
20. Guaranteed stall space will be pre-assigned.
21. Animals going through Cherokee County Fair Premium Sale can continue on for further exhibition and premium sales.
22. All livestock must remain in their stalls from 9:30 a.m. to 9:30 p.m. each day of the fair, except to be watered or taken to wash area. Cattle must be in the barns from tie-outs by 9:30 a.m. & may release to tie-outs at 9:30 p.m. Animals can be fed and watered at any time, but must remain stalled between 6:00 p.m.-9:30 p.m. Pens and stalls must be cleaned before 6:00 p.m. No tractor use should be done between 6-9:30 p.m. for the safety of spectators.
23. Lights will be shut off at midnight in the barns during fair week (except in the area which will be showing their species the following day, lights can be left on there later, if necessary). A 1:00 a.m. curfew will be in place with adults and superintendents coordinating this effort. The Fair Veterinarian and the Species Superintendent will in accordance grant permission for early release of animals from the fair for family or health concerns of the animals, without this allowance premiums will be forfeited.
24. **FITTING RULE**
Each exhibitor must care for and groom his or her own animal and may use only the assistance of an immediate family member (parents, legal guardian, siblings, and grandparents) or another Kansas 4-H, FFA, HYA member who is an exhibitor at this year's livestock show. **Note legal guardians** in Kansas must be appointed by the court. Please be prepared to present court order of legal guardianship upon request.

Other individuals who do not meet the definition of "immediate family member" or are not exhibitors at the show but who wish to provide consulting assistance to exhibitors shall be deemed "Livestock Helpers." With includes Superintendents, 1 Committee Member may also help, Project Leaders, FFA Leaders.

Grooming at the Cherokee County Fair for all shows may include the use of adhesives, paints, and powders and shall not include the use of hair not from the animal being groomed or twine/artificial material.

The use of private and/or professional trainers or fitters will not be allowed. If this situation occurs, the young person will be asked to remove their animal from the fairgrounds and all premium money will be forfeited. This applies to all animal exhibits

EXHIBITOR'S DUTIES AND PRIVILEGES

1. Any person making an entry of an animal or article, misrepresenting the same in any way will forfeit the premium and be excluded from competition.
2. Exhibitors will be required to keep their space and stalls in a clean condition by removing any fifth and litter to where the sanitation force of the association may get to it with convenience.
3. Livestock must be exhibited promptly when ordered to be shown.

4. All stalls and stall areas should be clean and presentable on premium sale day, in order to go through the auction.
5. Criticizing or interfering with the judge, other exhibitors, breed representatives, show officials, or Fair Board members before, during or after the event may result in an individual or group being expelled, placed on probation, declared ineligible or barred from the Fair. This also includes messing with another exhibitor's exhibit.
6. **Tagging system for unclean stalls or pens**
 - a. First offense - **Yellow Tag** - if the superintendent of that species finds the stall or pen unclean, the individual using that stall or pen has less than 10 hours, from the time that the tag was attached to clean the stall or pen.
 - b. If the stall or pen has not been cleaned within those allotted 10 hours, an **Orange Tag** will be attached to the stall or pen by the superintendent of that species, but only after consulting with another superintendent of another species about the situation. If both superintendents feel it is necessary, the Orange Tag will be placed on the stall or pen.
 - c. If it is still not cleaned at the end of the 10 hours, a **Red Tag** will be issued. In order to issue a Red Tag, the superintendent of that species must consult with a Fair Board Member and an Extension Board Member or Extension Agent. If the three involved feel that the situation deems the need of a Red Tag, it will be placed on the stall or pen and that individual must remove their animal from the premises and will not receive any premium money.

LIVESTOCK HEALTH RULES 4-H/FFA/HYA AND OPEN CLASS

The following livestock health rules shall govern the admission of livestock to the fairgrounds.

FAIR HEALTH REQUIREMENTS

2026 Requirements for Kansas County Fairs Kansas Livestock

GENERAL HEALTH REQUIREMENTS: All animals are subject to examination by the exhibition staff or their representatives and shall be free of clinical signs of infectious or contagious disease. Health certificates and additional requirements shall be a county option. Any animals presenting to the fair in a body condition score of 3/9 or less will not be allowed to remain at the fair.

LIVESTOCK ORIGINATING FROM OTHER STATES GENERAL REQUIREMENTS:

All animals (cattle, bison, sheep, and goats), shall be free of clinical signs of infectious or contagious disease and must be accompanied by a health certificate issued within 30 days of exhibit. This must be available, upon request, to the exhibition staff. All animals, except steers and spayed heifers, must be individually identified by official breed registration tattoo or tag, USDA metal ear tag, or breed association ear notch for swine.

FAIRS AND SHOWS

4-H/FFA/HYA members wishing to participate in a competitive event have the responsibility to ascertain the requirements established by sponsors of such an event. Those requirements are likely to vary from event to event and from time to time. 4-H/FFA/HYA members have the option of participating or not participating in those competitive events. Please note that rules and regulations for those parts of the fair designated for participation by 4-H members must conform to policies and procedures established by the Director of Extension. Participation in 4-H fairs is to be based on two principles:

1. The exhibit should demonstrate knowledge and skills learned in a 4-H project experience in a local 4-H club, group, event enrichment program, or individual participation.
2. The member should not benefit economically from multiple premiums, auctions or sales in major shows with the same exhibit.

An animal sold at a public auction or privately, whether for immediate or future delivery, can from the time of such sale, be shown by the seller in any subsequent 4-H/FFA/HYA show. This policy also applies to those animals which have gone through a premium auction, whether or not ownership has changed. All exhibits are intended to be the result of knowledge and skills gained in one or more 4-H/FFA/HYA experiences. Therefore, ownership time periods may be established for certain exhibits by the various shows and listed in the show's rules and regulations.

***See weigh in dates and times for 4-H/FFA/HYA animals on page 52**

Qualifying for State Fair Rules

4-H exhibitors 9 years and older awarded blue or purple ribbons are eligible to enter their exhibits in the Kansas State Fair. Pre-registration forms can be picked up or filled out at the Extension Office. **Not all department qualify and the number of exhibitors eligible varies per department.

FFA Kansas State Fair Entries please check with your FFA Advisors for eligible.

PREMIUM LIST

OPEN PREMIUM: In making payments for premiums awarded, no award will be recognized except the superintendent's entry book properly approved and signed by the superintendent and judge of the department in which the exhibit would be entered. No prize will be awarded unless the animal or article is worthy and this shall be determined by the judge. Exhibitors are expected to promptly obey orders of the management in placing their stock on exhibition at all times and are subject to the instruction of the superintendents of the department. Failure to comply with these regulations may cause a forfeiture of any and all premiums due to such offenses. No premiums shall be awarded or paid upon an animal or article for which no classification is provided or mention is made in this list, hereafter published. Open class livestock premiums will be paid in the Extension Office, all other open Quonset hut premiums will be paid in the fair board office, starting at 3:00 PM Saturday of the Fair. **NO OPEN PREMIUMS WILL BE MAILED. Any ribbon premium not picked up by 10:00 p.m. on Saturday of the Fair will be forfeited to the Fair Board.**

4-H/FFA/HYA PREMIUM: All prize money will be based on number of entrants and points allowed by the Fair Board listed under each class. **PREMIUM MONEY WILL BE PAID TO EXHIBITORS AT THE EXTENSION OFFICE MEETING ROOM BETWEEN 3:00 P.M. AND**

5:00 P.M., SATURDAY OF THE FAIR WEEK. Premiums not claimed at that time can be picked up at the Extension Office during regular business hours after the fair. Any ribbon premium not picked up by October 1st of that year will be forfeited to fair board.

**Put our
expertise
to work
for you.**



209 W Maple
Columbus, KS 66725
620-429-1040

DBTP#B13696 ©2015 H&R Tax Group, Inc. 15-1416

**Stop by the Lion's Shack for
Delicious food and refreshing drinks!**

**Open Tues - Saturday
Lunch & Dinner!**



- Burgers**
- Hot Dogs**
- Chicken Strips**
- Hot Fries!**

Proud to support the Cherokee County Fair

DEPARTMENT A. OPEN**DIVISION A1****BREEDING BEEF CATTLE**

Superintendent: KC Youngblood & Kim Scott

Committee: Bennie Capron

PREMIUMS For all classes unless stated otherwise**1st - \$17.50 2nd - \$11.75 3rd - \$6.75****SPECIES HEALTH REQUIREMENTS**

CATTLE & BISON: The Kansas Animal Health Department (KAHD) requires no test on cattle and bison of Kansas origin.

CATTLE & BISON from other states: In addition to the general requirements, cattle and bison, except steers and spayed heifers, originating from other states and 18 months of age or older, must meet one of the following requirements:

1. Originate from a "brucellosis-free" state
2. Originate in a constituted part of certified brucellosis-free herd. Herd certification number must be entered on the health certificate. Present evidence on the health certificate. Present evidence on the health certificate that the animal has been tested negative for brucellosis by an approved state/federal laboratory within 30 days of the exhibition date.
3. Cattle and bison, except steers, not originating from a tuberculosis free state shall be tested negative for tuberculosis with 90 days prior to the exhibition date.
4. All out of state cattle must have a health certificate within 30 days of the exhibition date
5. Intake Males 12 months or older MUST have some type of nose restraint

ANGUS, SHORTHORN, LIMOUSIN, HEREFORD, CHAROLAIS, SIMMENTAL, GELBVIEW
RED ANGUS, & COMMERCIAL

All Animals entered in this department must be registered purebreds in the records of their national association, otherwise they will be shown as commercial cattle. Actual papers must be presented at check-in.

NOTE: In Open Class Beef, two-year-old heifers may not show in both classes 105 & 106. Two-year-old heifers may show in class 105 without calf at side or in class 106 with calf, but not both. **Bucket calf cannot show in Open Class.**

CLASS DESCRIPTION OF CLASS

100	Jr Heifer calved Jan 1 or later current year
101	Sr. Heifer calved Sept 1 – Dec 31 prior year
102	Summer YR Heifer, calved May 1 – Aug 31 prior year
103	Jr YR Heifer calved Jan 1 – Apr 30 prior year
104	Sr. YR Heifer calved Sept 1 – Dec 31 2 years prior year
105	2 YR Old Heifer calved Jan 1 – Aug 31
106	Cow & Calf (calf born after Jan 1 current year)
107	Jr Bulls, calved Jan 1 or later current year
108	Sr. Bulls, calved Sept 1 – Dec 31 prior year
109	Summer YR Bull calved May 1 – Aug 31 prior year
110	Jr YR Bulls calved Jan 1 – Apr 30 year prior
111	Sr. YR Bulls calved Sept 1 – Dec 31 two years prior
112	Two Bulls any age bred and owned by exhibitor
113	Jr Get of Sire, three animals both sexes represented from classes 108-109 and 1-2 owned by exhibitor – RIBBON

- 114 Get of Sire – four animals from above classes, both sexes to be presented owned by exhibitor
- 115 Pair of Calves; heifer from class 106 or 107 and a bull from class 108 or 109 bred and owned by exhibitor
- 116 Pair of females any age bred and owned by exhibitor
- 117 Pair of yearlings, one Bull from class 110-111 and one Heifer from class 103-104 owned by exhibitor



**Country Styles Dog
Grooming
& Boarding**

*April Henderson
Owner/Operator*

Baxter Springs, KS

Follow us on Facebook

Book your appointment with us through Facebook Messenger



AUTO PARTS

WALT'S PARTS COMPANY

*Fast, friendly knowledgeable service
for all of your automotive needs.
Have fun at the fair!*

116 N. EAST AVENUE • COLUMBUS, KS 66725

(620) 429-1225

**DIVISION A2
DAIRY CATTLE**

Superintendent: Jamie Walsh

Committee: Kylee Sommer

PREMIUMS For all classes unless stated otherwise

1st - \$17.50 2nd - \$11.75 3rd - \$6.75

AYSHIRE, MILKING SHORTHORN, JERSEYS, HOLSTEINS, GUERNSEY, BROWN
SWISS & COMMERCIAL

All Animals entered in this department must be registered purebreds in the records of their national association, otherwise they will be shown as commercial cattle. Actual papers must be presented at check-in.

SPECIAL RULES

1. GET OF SIRE shall consist of four animals, any age, either sex, but not more than two bulls, the get of one sire.
2. At least two animals must be two years old or over. Not more than one animal need be owned by exhibitor.
3. JUNIOR GET OF SIRE shall consist of four animals, all under two years of age, either sex, but not more than two bulls, the get of one sire. Not more than one animal need be owned by exhibitor.
4. PRODUCE OF DAM shall consist of two animals, any age, either sex, the produce of one cow. Not more than one animal need be owned by exhibitor.
5. SENIOR YEARLINGS that have calved shall be shown in two-year-old class.
6. BEST UDDERED COW must be in milk and will be judged on udder alone.
7. BEST THREE FEMALES to consist of three females all to be bred and owned by an individual exhibitor. (No farm shall win more than one money in this class.)
8. BREEDER HERD to consist of 3 females over two years old and a male.

CLASS DESCRIPTION OF CLASS

200	Dairy Heifer, born after Mar 1 this year
201	Heifer Intermediate Calf, Dec 1 prior yr. to Feb 28 this year
202	Heifer Calf, Sept 1 prior yr. to Nov 30 prior yr.
203	Heifer, Jr Yearling Mar 1 prior yr. to Aug 31 prior yr.
204	Heifer, Sr. Yearling Sept 1, 2 yrs. prior to Feb 28 prior yr.
205	Cow, Jr 2 yr. old, Mar 1 to Aug 31 two yrs. prior
206	Cow, Sr. 2 yr. old, Sept 1 to Feb 28 two yr. prior
207	Cow, 3 yrs. old in milk, Sept 1 to Aug 31 three yrs. prior
208	Cow, 4 yrs. old in milk, Sept 1 to Aug 31 four yrs. prior
209	Cow, 5 yrs. and older in milk, before Sept 1, 5 yrs. prior
210	Cow, 3 & 4 yrs., dry Sept 1 to Aug 31, 3 & 4 yrs. prior
211	Cow, 5 yrs. & over, dry before Sept 1, five yrs. prior
212	Best Uttered Cow
213	Get of Sire
214	Jr Get of Sire
215	Produce of Dam
216	Best Three Females owned and bred by exhibitor
217	Breeders Herd

**DIVISION A3
DAIRY GOATS**

Superintendent: Jamie Walsh

Committee: Kylee Sommer

PREMIUMS For all classes unless stated otherwise

1st - \$13.00 2nd - \$7.25 3rd - \$6.00

SPECIES HEALTH REQUIREMENTS Goats originating in Kansas and from other states must meet the general requirements. In addition to the general requirements, goats shall:

1. Any goat showing signs of infectious disease will not be allowed on grounds (Examples: foot rot, CAE, CL, sore mouth or lice)
2. If registered and no legible tattoo or microchip they must have Scrapie's tag. The ID of goat will be determined by tattoo or microchip if no Federal Scrapie's Tag.
3. Exhibitor or agents of owner are allowed to show as many as he/she is willing in a class, **but** will only be allowed 2 paying positions in that class. Based on owner of the animal.
4. Classes will be determined by age. Age as of July 1.
5. All animals entered in open and youth shows must show as the same breed in both. For Example (all animals not registered will show as crossbred in both divisions.)

GOAT BREEDS: LAMANCHA, ALPINE, NUBIAN, TOGENBERG, NIGERIAN DWARF, RECORDED CROSSBREED, SANAAN DAIRY GOAT DIVISION

All Animals entered in this department must be registered purebreds in the records of their national association, otherwise they will be shown as crossbred. Actual papers must be presented at check-in.

CLASS DAIRY GOAT DIVISION

- 300 Junior Doe Kid 0-3 months
- 301 Junior Doe Kid 3-6 months
- 302 Junior Yearling 6-9 months
- 303 Junior Yearling 9-12 months (not in milk)

CLASS SENIOR DOES

- 304 Senior Doe 12-18
- 305 Senior Doe 18-24 months
- 306 Senior Doe 24-36 months
- 307 Senior Doe 36-48 months
- 308 Senior Doe 48 and older
- 307 Best 3 Females
- 308 Daughter of Dam
- 309 Produce of Dam

**DIVISION A4
MEAT GOATS**

Superintendent: Jessi Cain

Committee: Albert Welch

PREMIUMS For all classes unless stated otherwise

1st - \$13.00 2nd - \$7.25 3rd - \$6.00

GOAT BREEDS:

BOER, KIKO, SPANISH, MYOTONIC, PYGMY, GENE MASTER, TENNESSEE,
CROSSBREED

All Animals entered in this department must be registered purebreds in the records of their national association, otherwise they will be shown as crossbred. Actual papers must be presented at check-in.

SPECIES HEALTH REQUIREMENTS

Goats originating in Kansas and from other states must meet the general requirements. In addition to the general requirements, goats shall:

1. All goats must be identified with Scrapie Tag or registered visible tattoo, or microchip. No Exceptions
2. Any goat showing signs of infectious disease will not be allowed on grounds. (Examples: foot rot, CAE, CL, sore mouth or lice.)
3. Exhibitor are allowed to show only 2 goats per class.
4. Classes will be determined by age. Age as of July 1.
5. ID of goat determined by Federal Scrapie's Tag.
6. **Classes 400 & 401 will be broken by weights. All does must be weighed at the fair during weigh times.**

CLASS MEAT GOAT DIVISION

- 400 Doe, under 1 year
 401 Doe, 1 year old & over
 402 Daughter of Dam (Consists of
 1 female from one dam)
 403 Produce of Dam (2 females from one Dam)
 404* Best 3 Females

(*) Only one entry allowed per owner in this class



Division A5

Poultry

Superintendent: Rosie Heistand

Committee: Kristen Shepard & James Raven

Species Health Requirements & Rules

1. **NOTE: Each exhibitor is limited to a total of 10 pens.**
2. Chickens must be blood tested, if the State requires. The Pullorum Typhoid test is for exhibition, exotic and game birds, but excludes waterfowl. Testing must be done within 60 days of the county fair; this will fulfill requirements for county & state fair. Columbus Veterinary Clinic will test birds free of charge on a date to be announced in the 4-H newsletter, unless birds are from certified hatchery or under 6 months old.
3. All poultry and waterfowl must have a numbered leg band on leg before placed in coop, no exceptions. Bands are available at testing. If no testing then from Superintendent or Club Leader
4. Old birds are those hatched in the previous calendar year, young birds are those hatched during the current calendar year.
5. Standard cooping will be furnished by the fair association.
6. All eggs will be gathered by the fair superintendent/or committee of the department and disposed of.
7. Exhibits should be checked in from 6:00 p.m. to 8:30 p.m. on Monday July 14th
8. The comparison system of judging as outlined in the American Standard of Perfection will be used in placing awards. A.P.A. Rules will govern in the matters of protests.
9. No birds will be allowed in the department without being entered.
10. **THE SAME BIRDS CANNOT COMPETE IN BOTH SINGLE AND PEN CLASSES**
11. No animals shown in 4-H/FFA market classes (meat pen) will be allowed to show in open breeding classes in the same year.
12. No dirty or sick birds will be admitted. The superintendent or his/her assistant or Fair Vet shall be the judge at to what constitutes a sick bird. Healthy birds are not to be removed from the exhibit barn without permission from the one in charge. A person violating any of the above rules will forfeit any prize money that may be awarded.
13. Each exhibitor will be responsible for the feeding, watering, and cleaning of his/her own pens. In and under pens.
14. In making entries, please specify variety, class number, and give band number of specimen. On pen entries, specify old and young. **AFTER AN ENTRY IS TRANSFERRED TO ENTRY BOOK NO CHANGES MAY BE MADE.**
15. **TAG SYSTEM OF COOPS WILL BE USED.** Dirty coops will not be tolerated. Noncompliance will result in loss of award, ribbon, and bird dismissed.
16. The following awards will be paid on the breed and varieties of chickens. In any class where only one entry is made, 50% of the prize money will be paid.

PREMIUMS For all classes unless stated otherwise
1st - \$2.00 2nd - \$1.75 3rd - \$1.25

CLASS	DESCRIPTION OF CLASS
500	Large Fowl Cock, male 1 year and older
501	Large Fowl Hen, female 1 year and older
502	Large Fowl Cockerel, male less than 1 year old
503	Large Fowl Pullet, female less than 1 year old
504	Bantam Cock, male 1 year and older
505	Bantam Hen, female 1 year and older
506	Bantam Cockerel, male less than 1 year old
507	Bantam Pullet, female less than 1 year old
508	Pigeon Cock, male 1 year and older
509	Pigeon Hen, female 1 year and older
510	Pigeon Cockerel, male less than 1 year old
511	Pigeon Pullet, female less than 1 year old
512	Turkey 1 bird wither sex
513	Other Fowl

PREMIUMS For all classes unless stated otherwise
1st - \$2.00 2nd - \$1.75 3rd - \$1.25

CLASS	DESCRIPTION OF CLASS
514	Ducks (all varieties)
515	Geese (all varieties)

DIVISION A6
RABBITS

Superintendent: Charla King
 Committee: Hannah Zahm

PREMIUMS For all classes unless stated otherwise
1st - \$2.00 2nd - \$1.75 3rd - \$1.25

Rules

- Exhibitors will be limited to ten entries.**
- Check in for rabbits will be Monday, week of fair between 6:00p.m.-8:30 p.m.**
- Crossbreeds can only be shown in 4-H/FFA Classes
- No rabbit showing signs of illness may be shown
- When making entry, exhibitor must specify on the entry form the breed, variety (color) sex, age class and tattoo of each individual rabbit.
- Each exhibitor will be responsible for the feeding, watering and cleaning of his/her own individual pens.
- Exhibitors should be present during judging to remove rabbits from their cages, or make arrangements with another person to do it for them. YOU are responsible for seeing that your rabbit gets judged.
- All rabbits must be permanently and legibly tattooed in their left ear, before check in.
- All rabbits will be divided into classes by the age and judged according to their breed standard as listed in the ARBA "Standard of Perfection".
- All rabbits shown in open class must be an ARBA recognized breed.

Pre-Junior - (under 3 months) classes only available in the following breeds: Beveren, Blanc de Hotot, Californian, Champagne D'Argent, Checkered Giant, American Chinchilla, Giant Chinchilla, Cinnamon, Crème D'Argent, New Zealand, and Palomino.

Juniors - (under 6 months)

Intermediate – (6-8 months) Classes only available in the following breeds: American, Giant Angora, Beveren, Blanc de Hotot, Californian, Champagne D'Argent, Checkerd Fiant, American Chinchilla, Giant Chinchilla, Cinnamon, Crème D'Argent, Flemish Giant, English Lop, French Lop, New Zealand, Palomino, Satin and Silver Fox.

Senior – 6 months and older for breeds other than those listed as having intermediate classes, eight months of age or over for breeds having intermediate classes. No animals shown in 4-H/FFA market classes will be allowed to show in open breeding classes in the same year.

CLASS Open Rabbit Classes

- 600 Pre-Junior Doe – Only breeds listed above with pre-juniors
 601 Junior Doe – Under six months of age
 602 Intermediate Doe – Only breeds listed above with intermediate classes
 603 Senior Doe – Eight months of age and over for breeds with intermediate classes; six months and over for all other breeds.
 604 Pre-Junior Buck – Only breeds listed above with pre-juniors
 605 Junior Buck- Under six months of age.
 606 Intermediate Buck – Only breeds listed above with intermediate classes.
 607 Senior Buck – Eight months of age and over for breeds with intermediate classes; six months and over for all other breeds.

DIVISION A7

SHEEP

Superintendent: Jamie Walsh

Committee: Ted Myers & Mike Colbert

PREMIUMS For all classes unless stated otherwise

1st - \$13.00 2nd - \$7.25 3rd - \$6.00

SPECIES HEALTH REQUIREMENTS

Sheep originating in Kansas and from other states must meet the general requirements. In addition to the general requirements sheep shall:

1. Be free of any signs of "sore mouth," infectious skin lesions (ringworm)
2. Be free from "club lamb fungus"
3. All sheep must be identified with a Scrapie's ID tag

All Animals entered in this department must be registered purebreds in the records of their national association, otherwise they will be shown as crossbreed. Actual papers must be presented at check-in.

CLASS DESCRIPTION OF CLASS

- 700 Ram Lamb under 1 year
 701 Ewe 3 yrs. old and over
 702 Ewe 1 yr. old to under 3 yr. old
 703 Ewe Lamb under 1 year

Division A8**Swine**

Superintendent: Clark Hall & Tony Hodge

Committee:

PREMIUMS For all classes unless stated otherwise**1st - \$14.50 2nd - \$9.00 3rd - \$5.75****Species Health Requirements**

SWINE: Swine originating in Kansas must meet the general requirements. Kansas has obtained Stage IV status in the National Pseudorabies program and the state is classified free of swine brucellosis. A negative pseudorabies and brucellosis test are not required for Kansas origin swine.

Swine From Other States: Call (785-296-2329) for prior shipping permit number for all out of state swine. In addition to the general requirements, swine over six months of age originating from other states must meet one of the following requirements:

1. Originate from a qualified pseudorabies-free, validated brucellosis free herd. The current qualified/validated number must appear on the health certificate. (Hogs from monitored pseudorabies herds do not qualify under this requirement)
2. Originate from a state of Stage IV or V status in the National Pseudorabies Program. Show evidence on the health certificate that swine have been tested negative for pseudorabies by serum neutralization and brucellosis within 30 days prior to entry into Kansas and that the herd or origin has had no positive cases of pseudorabies within the previous 12 months.

NOTE: SWINE VACCINATED FOR PSEUDORABIES SHALL NOT BE ALLOWED INTO KANSAS FOR EXHIBITION PURPOSES

NOTE: No animals shown in 4-H/FFA market classes will be allowed to show in open breeding classes in the same year.

YORKSHIRE – HAMPSHIRE – DUROC – SPOTTED HOG – CHESTER WHITE –
POLAND CHINA –Herford- AOB-CROSSBREED (COMMERCIAL)

All Animals entered in this department must be registered purebreds in the records of their national association, otherwise they will be shown as commercial swine. Actual papers must be presented at check-in.

CLASS DESCRIPTION OF CLASS

800	Boar farrowed on or after Mar. this year
801	Sow farrowed before Dec. 31 prior year
802	Gilt farrowed during Jan. this year
803	Gilt farrowed during Feb. this year
804	Gilt farrowed during Mar. this year
805	Gilt farrowed during Apr. this year
806	Get of Sire on or after Aug. 1 prior year
807	Breeders Herd 1 Boar, 3 females from the above classes

QUONSET HUT

Superintendents: Anne E Sharp, Kara Alexander and Josephine Elliott

General Rules

1. Please note only two entries in any class per exhibitor.
2. Quonset hut entries will be accepted beginning at 6:00 PM, till 7:00 PM July 12st, Sunday night and then open again July 13th, Monday morning 7:00 AM till 10:00 AM.
3. Quonset hut judging will start Monday after 11.00 AM. All judging is closed to public.
4. Crops, Home Economics, Flowers, Fine Arts, Photography & Crafts, entries must be made and in place by 10:00 a.m., Monday July 13th.
5. All Quonset hut entries may be removed after 9:30 PM, Saturday July 18th.
6. Quonset hut premiums will be paid in the fair board office, starting at 3:00 PM Saturday of the Fair. **NO OPEN PREMIUMS WILL BE MAILED. Any ribbon premium not picked up by 10:00 p.m. on Saturday of the Fair will be forfeited to the Fair Board**
7. Ribbons will be awarded on the quality of craftsmanship determined by the judge, not due to the number of entries in the class. If there is one entry in the class, that doesn't mean you get the 1st place. When an entry is made of an article, the Superintendent will give the party a card in duplicate, which will contain the number of entry class and must be attached to the article. No person shall receive more than one award on the same entry in the same class it is exhibited.
8. No exhibit having won a prize at the fair previously can be entered.
9. Every article will be under the control of the superintendent and all possible care will be taken to prevent damage, but in no instance will the Fair Board be responsible for injury or loss that may occur.
10. All work should be cleaned, finished and ready for display.
11. All items are to be made since the previous year.
12. All items entered must be made by the person entering the item.
13. Exhibitors may offer their work for sale, not to be removed before 9:30 PM Saturday of the fair.

CLASSIFICATIONS: A – Adults (Amateur) (Anyone 19 years and older)
 T – Teens (Amateur) (13 to 18 years old)
 J – Juniors (Amateur) (12 years old and younger)

This is Cherokee County

This area in the Quonset Hut is to showcase the different Cities in the County along with different unique place within the county.

Department B Open Crops, Fruit & Garden, Floriculture

Division: B1

Superintendents: Tom & Ann Theile

Committee:

PREMIUMS For all classes unless stated otherwise

1st: \$1.75 2nd: \$1.25 3rd: \$1.00

CROPS-GARDEN

RULES

1. Entries must be registered and in place by Monday, week of Fair, at 10:00 a.m.
2. All crops must be Harvest between July1, of previous year through July 1, of current year, are eligible to show.
3. **Entries must be picked up by 10:00 p.m. Saturday, of the fair week, or they will be disposed of.**

Crops

Corn	Ten ears or one gallon jar that hasn't been entered in prior years
100	Yellow Corn
101	White Corn
102	Popcorn
103	Indian Corn
104	Tallest Stalk of Corn

Grain Sorghums – ten head per exhibit

105	Hybrid Grain Sorghum
106	Hybrid Forage Sorghum – Exhibit to consist of the entire plant, no roots
107	Other Forage Sorghum

Soybeans – bundle of five plants grown during current year. Variety must be named.

NOTE: all classes calling for a gallon sample example (wheat, oats) may have 2x3 in. diameter Styrofoam cylinder places in the glass gallon jar to reduce the amount of grain to about three quarts.

Other – Use a 1-gallon sample (Glass jar)

108	Soft Red Winter Wheat, Variety or hybrid must be named		
109	Hard Red Winter Wheat, Variety or hybrid must be named		
110	Hard White Wheat, Variety or hybrid must be named		
111	Soybeans Variety or hybrid must be named		
112	Alfalfa seed	113	Oats seed
114	Barley seed	115	Brome Grass seed
116	Other Tame Grass seed Variety must be named		
117	Sweet Clover Seed	118	Red Clover Seed
119	Lespedeza Seed		
120	Miscellaneous Crop – Exhibit to consist of 1 gallon sample of seed or 10 heads produced from current project. Variety must be named		

Sunflowers

121	Confectionery Heads – 3 heads must be submitted.
122	Confectionery Seeds in jar – 1 gallon sample must be submitted.
123	Oil Seed heads – 3 heads must be submitted.
124	Oil seeds in jar – 1 gallon sample must be submitted.

- 125 Tallest Sunflower
 126 Largest Sunflower Head

Garden

THE FOLLOWING CLASSES ARE A PLATE OF 5

CLASS DESCRIPTION

- 127 Tomatoes
 128 Cherry Tomatoes
 129 American Slicing Cucumbers
 130 English Cucumbers
 131 Beets
 132 Red Onions
 133 White Onions
 134 Yellow Onions
 135 Garlic
 136 Sweet Corn (ears)
 137 Bell Peppers
 138 Jalapeño Peppers
 139 Banana Peppers
 140 Other Peppers (Variety should be named)
 141 Carrots
 142 Red Potatoes
 143 White Potatoes
 144 Yellow Potatoes
 145 Sweet Potatoes
 146 Turnips
 147 Okras
 148 Parsnips
 149 a plate of 12 Green Beans
 150 a plate of 12 Yellow Wax Beans
 151 1 Zucchini
 152 1 Watermelon
 153 Largest Watermelon
 154 1 Summer Squash
 155 1 Winter Squash
 156 1 Other Squash (Variety should be named)
 157 Largest Squash
 158 1 Pumpkin
 159 Largest Pumpkin
 160 1 Eggplant
 161 1 Cabbage
 162 1 Cantaloupe
 163 Fresh Culinary Herbs, six stems (example – parsley, basil, dill, etc.) Exhibits in a disposable container of water. Judged by each variety. Dried herbs are not accepted.
 164 Small Fruits (1/2-pint box) Ex: Strawberries, Blackberries, Raspberries, or other similar sized fruit. Judged by each variety.
 165 Tree Fruit (plate of 5) ex: apples, pears, peaches, etc. Judged by each variety.
 166 Grapes (plate of 2 bunches)
 167 Other vegetables (variety should be named)

Hay

Exhibit to consist of one flake or slice from a rectangular bale, or a 10" section cut from a round bale. The flake or slice should be approximately 6 inches in thickness and tied in two directions. Variety must be named.

CLASS DESCRIPTION OF CLASS

168	Alfalfa
169	Grass hay

PECAN & WALNUT ENTRY AND EXHIBIT RULES

20 pecans will be considered standard for each entry: 15 for exhibit and 5 for cracking
 20 walnuts will be considered standard for each entry: 15 for exhibit and 5 for cracking

CLASS DESCRIPTION OF CLASS

170	Pecans
171	Walnut

Points Score

Size	10	Uniformity	15
External Appearance (Shape)	10	Cracking Quality	20
Filling of Kernels	20	Color of Kernels	15
Quality of Kernels	10	Total	100

- All entries in exhibit should be accompanied by exact location of trees. (This information is wanted so a source of scion wood can be located for future grafting and budding work.)
- All nuts exhibited are to be clean and attractive.
- Nuts of preceding year's crops should be stored in a cool dry place so they remain free from rancidity and insect damage.
- Nuts in a single plate must be of a single variety. Plates containing nuts of more than one variety will be disqualified.
- All material entered in exhibits will be disposed of at the discretion of the county agent.

Explanation of Point Score:

Size-	The larger nuts will be given preference.
Uniformity-	The nuts on any one plate should be typical of the tree or variety and be uniform in size, form or shape, color or conformation.
Appearance-disease.	Nuts will be clean and free from discoloration, insect or
Cracking Quality-	Nuts will be cracked in a machine typical in principle of types used by large cracking companies. Nuts that crack out whole will be given high preference.
Filling & Plumpness-	The kernels should be plump, full in the cavities of the shell. Shrunken or shriveled kernels will be heavily penalized.
Color of Kernels-	The color should be right and attractive. Uniformity of color is important.
Quality of Kernels-	Kernels should be free from rancidity and have a good flavor.

HONEY

Open to all beekeepers, young and old. All jars must be plain and free of labels. No inner seals in lids.

172	Extracted Honey; Light	175	Extracted Honey; Dark
173	Honey Gift Package	176	Beeswax Candles
174	Art Design in Beeswax		
177	Frame of Honey (shallow or medium depth)		
178	Chunk Honey		
179	Comb Honey		
180	Cut Comb Honey		
181	Black Label: Honey Must be submitted in a 1 lb. Queenline or Gamber Glass Jar. Judged on taste only. Must be entered in (2) additional honey classes to be able to participate in this class.		

Entry rules and regulations, with tips and scoring for entries:

Extracted Honey: also known as strained honey, is honey that has been separated from the comb by centrifugal force, gravity, straining, or other means. Shall consist of (3) three one-pound Queen Line or Classic jars, no inner seals in lids. All jars must be plain and free of labels.

Gift Package: Item must be clearly labeled, as they would be offered for sale – except any marks identifying the entrant must be obscured or removed, or fictitious. Fictitious labels must meet legal label requirements. Gift package, if wrapped, must be able to be unwrapped for judging. Homemade food items must have recipes attached. Gift packages must contain at least 50% producer made items. A 3" x 5" note card must be included that states the intended use of package. Youth gift packages may not contain alcoholic beverages.

Beeswax: (3) three-pound block, geometric shape, not decorative, smooth surface top and bottom.

Beeswax Candles: Four molded or dipped candles. No non-beeswax enhancement allowed, except wick.

Art Design in Beeswax: Entries must be (2) two pounds' minimum weight, 100% beeswax: may be more than one piece but must be firmly joined together: may be cast in mold or carved. No non-beeswax enhancement allowed.

Frame of Honey: Shallow or medium depth. Frame must be in a display case, both sides visible.

Division: B2

Superintendents: Tom & Ann Theile

Committee:

PREMIUMS For all classes unless stated otherwise**1st: \$1.75 2nd: \$1.25 3rd: \$1.00****Rules**

1. Judging will be 50% on arrangement, any suitable container.
2. All exhibits must be grown by the exhibitor.
3. All entries must be real flowers, vine, or plants grown by the exhibitor except wildflowers. Purchases plants in the exhibitor's care one year are acceptable.
4. All entries must be in adequate, non-tipping containers.
5. No leaf shine.

FLOWERS CLASSES**Single Stem**

200	Dahlias	209	Asters
201	Marigolds (small under 2 inches)	210	Snapdragons
202	Marigolds (large over 2 inches)	211	Gladiolas
203	Zinnias (Small)	212	Wild Flower
204	Zinnias (large)	213	Black-eyed Susan
205	Hydrangea	214	Daisy
206	Cosmos	215	Periwinkle
207	Roses	216	Spider Plants
208	Petunias	217	Gloriosa Daisy

ARTISTIC ARRANGEMENTS CLASSES**Rules**

1. Plants material used in designs need not be grown by the exhibitor, but no florist flowers.
2. Accessories which aid interpretation are permitted.
3. No artificial flowers or foliage are permitted.
4. Arrangements are judged on design, creativity and color.
5. All plants must be identified.

218	Wildflower Bouquet	223	Table Centerpiece
219	Arrangement in cup and saucer	224	Garden Flowers-Mixed
220	Butterfly Haven (Bright Flowers)	225	Arrangement of flowers & foliage in homemade container
221	Hummer Delight (Red Dominant)		
222	Garden Flowers-one of kind		

POTTED PLANTS CLASSES

226	Geranium	233	Hanging Basket (Vine)
227	African Violet	234	Hanging Basket (foliage)
228	Herbs	235	House Plant (flowering)
229	Succulent	236	House Plant (foliage)
230	Fern	237	House Plant (Vining)
231	Cactus	238	Hanging Basket (bloom)
232	Hanging Basket (outdoors only)		

DEPARTMENT C OPEN Family and Consumer Sciences**Division: C1 Canning**

Superintendent: Amy Gideon

Committee: Margaret Radlund

PREMIUMS For all classes unless stated otherwise**1st: \$1.75 2nd: \$1.25 3rd: \$1.00****Rules**

1. Exhibits must be canned since the previous fair.
2. Unsealed jars will not be judged.
3. Every article must be plainly labeled with the name of the product, i.e. green beans, apricot preserves, strawberry jam, etc.
4. All jellies and sweet spreads must be sealed (no paraffin)
5. Jellies must be shown in jars no larger the ½ pint standard canning jars.
6. Preserves, Jams, and Butter must be shown only in a standard pint or ½ pint jars.
7. Use standard pint and quart canning jars for pickles, relishes, vegetables, and fruits.
8. Leave rings on all jars, no colored canning jars will be permitted. Jars should be clean and free of rust.
9. Include a 3x5 card indicating canning method, process time & pressure (psi)

CLASSES**CANNING FRUITS**

300	Pie Fillings	303	Pears
301	Peaches	304	Apples
302	Apple Sauce	305	Misc. Fruit

VEGETABLES

306	Green Beans	309	Peas
307	Tomatoes	310	Beets
308	Corn	311	Miscellaneous Vegetable

PICKLES, RELISHES, SAUCES

312	Sweet Pickles	319	Ketchup
313	Dill Pickles	320	Barbecue Sauce
314	Pickle Relish	321	Miscellaneous Pickled Items
315	Sasa/ Picante	322	Miscellaneous Relish
316	Sour Sauerkraut	323	Miscellaneous Sauces
317	Tomato Sauce	324	Veg/Fruit Juice
318	Spaghetti Sauce		

SPREADS**CANNED**

325	Canned Meat	330	Sugar free Preserves, any kind
326	Preserves, any kind	331	Sugar free Jelly, any kind
327	Jelly, any kind	332	Sugar free Jams, any kind
328	Jams, any kind	333	Sugar free Miscellaneous Spreads
329	Miscellaneous Spreads		

DEHYDRATED FOODS

334	Fruit (1/3 to ½ cup)	337	Dried Herbs (1/4 to 1/3 cup)
335	Fruit Leather (3-4 pieces)	338	Dried Vegetables (1/3 to ½ cup)
336	Meat Jerky (3-4 pieces)		

Freeze Dried 1 cup

339	Fruits	341	Candy
340	Veggies		

Freeze-dried candy is judged by its light, airy, and extremely crunchy texture that melts in your mouth, rather than being chewy or sticky, with intense flavors due to water removal, and checking for complete dryness by ensuring no cold spots and a consistent snap, using touch and appearance as key indicators of quality. Low-quality candy will be dense, chewy, or sticky.

Division: C2 Culinary

Superintendent: Amy Gideon

Committee: Margaret Redlund

PREMIUMS For all classes unless stated otherwise

1st: \$1.75 2nd: \$1.25 3rd: \$1.00

Rules

1. All baked products shall be in disposable containers with zip-lock and or plastic bag covering.
2. Exhibit complete products for cake, pie, and bread products.
3. Recipes must be provided for foods.
4. Entries should not be from the same batch or batter. (For example, families sharing from the same batch or batter)
5. Photos of each bake goods will be taken for display. The photos and ribbon will be displayed for fair. **The remainder of the product must be picked up by the exhibitor between 7:00 PM and 8:00 PM Monday, of Fair week, or it will be disposed of.**

CLASSES**Cakes, Candies, Cookies, Pies**

400	Angel food, upright and unfrosted	404	Cupcakes (6 cupcakes)
401	Chiffon or Sponge Cake not Iced	405	Miscellaneous Cake
402	2 Layered Cake Iced	406	Sugar Free Cake
403	Bundt		

HOW CAKES AND CUPCAKES ARE JUDGED

General Appearance	10
Lightness	15
Crust or Frosting	10
Crumb	30
Flavor	35
Total	100

Points

COOKIE/BARS (6 COOKIES OR BARS)

407	Bar (2 x 2)	412	Drop
408	Refrigerator	413	Rolled in a Ball
409	Decorated Cookie	414	Misc. Cookies/Bar
410	Rolled Out	415	Sugar Free Cookies
411	Molded	416	Sugar Free Bar

PIE

417	Single Crust Pie	419	Cobbler/Crisp
418	Two Crust Pie	420	Sugar Free Pie

CANDY (6 PIECES)

421	Candy	422	Sugar Free Candy
-----	-------	-----	------------------

BREADS AND ROLLS

423	Loaf Wheat	429	Coffee Cake Muffins 6
424	Loaf White	430	Loaf Rye Bread
425	Bread Machine Loaf	431	Loaf Quick Bread
426	Yeast Rolls Wheat 6 rolls	432	Other Bread/Roll
427	Yeast Rolls White 6 rolls	433	Gluten Free
428	Sweet Rolls 6 rolls		

Division: C3 Sewing and Fancywork

Superintendent: Amy Gideon

Committee: Margaret Redlund

PREMIUMS For all classes unless stated otherwise**1st: \$3.50 2nd: \$2.25 3rd: \$1.75****Rules**

- Articles are judged on Appearance; Appropriateness; Design; Material; Workmanship.

CLASSES**SEWING**

500	Lingerie, underwear, gowns, Pajamas	510	Baby Clothes
501	Fancy Dress	511	Other Baby Items
502	Dress	512	Pre-School clothes
503	Men's Suit, Women's Pant/Jump Suit	513	Aprons
504	Pants or Slacks	514	Potholder
505	Blouses or Shirts	515	Pair of Pillow Slips
506	Vest	516	Pillow
507	Skirts	517	Misc. Sewing
508	Coats and Jackets		
509	Active Sportswear & Swim Suite		

QUILTS

518	Quilt Made by a Group (Group means more than 5 people)	526	Quilted Wall Hanging Any kind
519	Appliqued Quilt Hand Quilted	527	Quilted Table Runner
520	Appliqued Quilt Machine Quilted	528	Rag Quilt or Comforter-Tied
521	Embroidered Quilt Hand Quilted	529	Embellished Quilt
522	Embroidered Quilt Machine Quilted	530	Photo Transfer (Special effects)
523	Machine Pieced Ragtime Quilted	531	Patchwork
524	Machine Pieced Hand Quilted	532	T-Shirt Quilt
525	Machine Pieced Machine Quilted		

HOUSEHOLD CROCHET, KNITTING

533	Accessories-Crocheted	537	Garment-Crocheted
534	Accessories-Knitted	538	Garment-Knitted
535	Afghan-Crocheted	539	Bedsread Crocheted
536	Afghan-Knitted	540	Bedsread Knitted

HOUSEHOLD EMBROIDERY

541	Misc. Counted Cross Stitch	546	Crewel
542	Counter Cross Stitch (8x10 or smaller)	547	Needlepoint
543	Counter Cross Stitch (larger then 8x10)	548	Swedish weaving
544	Cross Stitch	549	Misc. Embroidery (item not cover above)
545	Misc. Cross Stitch		

HOUSEHOLD RUGS

550	Fabric/Quilted Rug	553	Woven
551	Hand-made Hooked	554	Misc. Rug
552	Latch-hook		

MISC. TEXTILES

555	Dolls	558	Sewn Bags (tote, purse, etc.)
556	Doll Clothes	559	Recycled Item
557	Stuffed Animals		

mcs

McDaniel Construction Services LLC

Shane McDaniel 417-438-4304

Commercial / Industrial

DEPARTMENT D OPEN ARTS & CRAFTS
Fine Arts, Special Crafts, & Woodworking
General Rules

1. The Fair Board seeks to recognize honest quality and originality and these factors will be major items in judging exhibits.
2. Entries must be the work of the exhibitor. Exhibitors may make no more than two entries in the same classification.
3. Oils should be framed; watercolors and other media should be mounted or matted. Frames should have wire eyes in place for hanging.
4. Exhibitors may offer their work for sale, not to be removed before 9:30 p.m. Saturday, of the Fair.
5. Articles previously shown at this fair will not be accepted for entry. Articles must be the result of this current year.

Division: D1 Fine Arts

Superintendent: Melissa Smiley

Committee:

PREMIUMS For all classes unless stated otherwise

1st: \$6.00 2nd: \$4.50 3rd: \$3.25

Rules

1. Oils, and Acrylics should be framed; watercolors and other media should be mounted or matted. Frames should have wire eyes in place for hanging.
2. Articles are judged on honest quality, and originality.

CLASSES

OIL PAINTINGS

600	Landscape	603	Birds or Animals
601	Flower or Fruit	604	Portrait or Figure
602	Still Life	605	Miscellaneous

ACRYLICS

606	Landscape	609	Birds or Animals
607	Flower or Fruit	610	Portrait or Figure
608	Still Life	611	Miscellaneous

WATERCOLORS

612	Landscape	615	Birds or Animals
613	Flower or Fruit	616	Portrait or Figure
614	Still Life	617	Miscellaneous

CHARCOAL, PEN OR PENCIL

618	Landscape	621	Birds or Animals
619	Flower or Fruit	622	Portrait or Figure
620	Still Life	623	Miscellaneous

OTHER

624	China Painting	627	Sculpture
625	Folk Art or Wood	628	Decorative Painting
626	Wood Carving		

Division: D2 Special Crafts

Superintendent: Melissa Smiley

Committee:

PREMIUMS For all classes unless stated otherwise**1st: \$6.00 2nd: \$4.50 3rd: \$3.25****CLASSES**

700	Beadwork	708	Stained glass
701	Metal Work	709	Basketry
702	Leather	710	Ceramics
703	Weaving	711	Recycled Item Functional
704	Pottery	712	Recycled Item Decorative
705	Jewelry	713	Paper Craft
706	Glass Craft	714	Misc. Craft of Any Other Kind
707	Wood Craft (not wood carving)		

Homemade Soap

715	Melt and Pour Soap Making	717	Hot Process Soap Making
716	Cold Process Soap Making	718	Liquid Soap Making

Handmade Candles

719	Votive Candle	722	Dipped Candle
720	Container Candle	723	Rolled Candle
721	Pillar Candle		

Scrapbooking

724	Vacation or Trip	726	Family
725	Holidays	727	Sports and Hobbies

Division: D3 Class Woodworking

Superintendent: Melissa Smiley

Committee: Terry North

PREMIUMS For all classes unless stated otherwise**1st: \$6.00 2nd: \$4.50 3rd: \$3.25****Classes**

800	Wooden Shelves
801	Doll Houses and Fancy Bird Houses
802	Wood Inlay Work
803	Scroll Saw/Fretwork
804	Outdoor Furniture
805	Patriotic Theme
806	Woodturning/Lathe work using solid wood stock
807	Picture Frames, Shadow Boxes, and other wall décor
808	Furniture, cabinets, and chests (such as cedar, blanket, or hope chests)
809	Small Boxes (Jewelry, Cigar, Ring, etc.)
810	Relief or Surface Carving
811	3-Dimension Carving
812	Clocks
813	Wooden tools, utensils, kitchen ware
814	Wooden Toys
815	Miscellaneous Item

Division: D4 LEGO-Duplo

Superintendent: Terry North

Committee:

PREMIUMS For all classes unless stated otherwise**1st: \$6.00 2nd: \$4.50 3rd: \$3.25****Both Individual and Group Rules:**

1. Only LEGO or Duplo blocks are allowed,
2. Two categories: 1. Kits, and 2. Original creations or Exhibits found online.
3. Parts and pieces from kits can be used to make your own creation.
4. Exhibit must be on a base made of cardboard, Lego base plate. Can be decorated to go along with your projects.
5. Each participant or group is allowed one entry per class.
6. Must declare class on entry.
7. A paper with instruction, and explaining the exhibit is required with entry. If a kit instruction for kit entries.

Group Entries Rules:

8. Group project must be entered in the age of the oldest member of the group.
9. Include name and ages of all participants.
10. All members will receive ribbons, but only one cash prize for the group is awarded.

Age Categories:

A for 4-8 Years Old

C for 3-17 Years Old

B for 9 to 12 Years Old

D for 18-Over

Classes: Kits Individual Please include age category (A, B, C, D)

900	Transportation-Machinery	902	Architectural Structures
901	Animals-Nature	903	Characters & Figures

Classes: Kits Group Please include age category (A, B, C, D) off of oldest member

904	Transportation-Machinery	906	Architectural Structures
905	Animals-Nature	907	Characters & Figures

Classes: Original Individual Please include age category (A, B, C, D)

908	Transportation-Machinery	910	Architectural Structures
909	Animals-Nature	911	Characters & Figures

Classes: Original Group Please include age category (A, B, C, D) off of oldest member

912	Transportation-Machinery	914	Architectural Structures
913	Animals-Nature	915	Characters & Figures

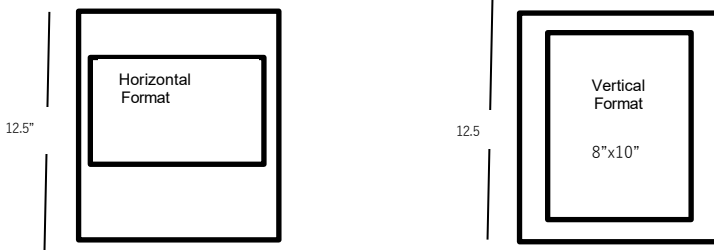
Division: D5 Photography

Superintendent: Mashea Shultz

Committee:

PREMIUMS For all classes unless stated otherwise**1st: \$6.00 2nd: \$4.50 3rd: \$3.25****RULES**

1. Entries must be the work of the exhibitor. Exhibitors may make no more than two entries in the same classification.
2. All photographs must be no larger than 8"x10". Photos are to be mounted across the 11" dimension of an 11"x12.5" studio mount, which can be purchased at the Extension Office. The top edge of the print must be 1" below the top of the mount.
3. On photos, no white data slip is to be used.
4. On photos, no lettering will be permitted on the mount of the picture. No underlays or borders are to be used. The white trim should be removed from the enlargement.
5. The Fair Board seeks to recognize honest quality and originality and these factors will be major items in judging exhibits.
6. Entries must be the work of the exhibitor. Exhibitors may make no more than two entries in the same classification.
7. All photographs must be no larger than 8"x10" or no smaller than 7"x9". Photos are to be mounted across the 11" dimension of an 11"x12.5" studio mount, which can be purchased at the Extension Office. The top edge of the print must be 1" below the top of the mount.
8. On photos, no white data slip is to be used, not mounted.
9. On photos, no lettering will be permitted on the mount of the picture. No underlays or borders are to be used. The white trim should be removed from the enlargement.
10. Exhibitors may offer their work for sale, not to be removed before 9:30 p.m. Saturday, July 30th.
11. Articles previously shown at this fair will not be accepted for entry. Articles must be the result of this current year.



PHOTOGRAPHY

Color Photo Classes

Class number Description's

1000 World In Motion

The trend of capturing pictures in black and white is popular even today as it helps to bring out the natural beauty of the subjects. This type of photography makes extensive use of contrasts and shadows to give the pictures a realistic and beautiful look.

1001 Portrait Human

One of the oldest types of photography is portrait photography. It can range from shooting your family members to friends. Often, the goal of portraiture is to show the character of a subject – to capture the person's personality and emotion in an image. These include self-portrait

Head Shot Photography

Headshot photography is a genre like portrait photography. The difference here is that the photographer only goes for headshots. A headshot is a typical shot of the head and bust. But it can go as far as a torso shot with folded arms. Images such as these are for professional use. Either for online purposes or as a portfolio shot for actors.

1002 Portrait Animal

Pet photography is the act of photographing pets in a portrait manner. Examples of these could be photographing dog, cats, birds or horses. Similar skills apply to pet photography as portraiture

1003 Wildlife

The genre of photography that focuses on animals and their natural habitat is called wildlife photography.

1004 Nature

Natural photography comprises of pictures of nature as viewed from the eyes of the photographer. Contrary to what many people believe, nature photography is not only restricted to capturing the images of trees and plants, but rather includes any outdoor natural aspect including hills, water bodies and even the sky.

1005 Landscape/ Scenery

Landscape photography is another way of saying scenic or environmental photography. It involves taking pictures of a natural scene – often large and grand, but sometimes smaller and more intimate – in a way that brings the viewer into a scene. Landscape photography is one of the most popular types today, spinning off several sub-genres such as storm photography, seascapes, tree photography sunsets, even night photography, and so on. With a broader definition, it also includes “urban landscape” photography and manmade scenes.

1006 Candid

Candid photography comprises of pictures clicked in completely natural states of the subjects without any prior preparedness. This type of photography is increasingly becoming popular not only during social events and special occasions, but for general images as well as it helps in capturing the uniqueness and magic of the moment.

1007 Fireworks

As the name indicates, Firework photography deals with clicking images of the beautiful firework display especially at night. This type of photography is relatively easy and can be carried on with a normal camera. These images, when clicked in a proper manner are quite majestic and appealing for the viewers.

1008 Still Life

Still life is best defined as the art of clicking pictures of immovable subjects. This forms a broad spectrum as it includes various other genres of photography including flower and food photography in addition to pictures of animals and people as well.

Still life photography can also be taking pictures in a studio of a manufactured scene in order to look as good as possible, because it can include almost anything.

1009 Action (Sports)

This genre of photography specializes in capturing a decisive moment in an event of sports. Sports photography is the act of photographing all kinds of sports. These can be fast-action sports, such as car racing, rodeos, and air shows. They can also be more relaxed, such as yoga photography.

1010 Abstract

Abstract photography is often compared to abstract art as it also focuses on the shape, pattern, color, form, and texture. The subject of abstract photography is generally second to be viewed as the impact of the aspects surrounding the subject convey the essence of the image in most cases.

1011 Special Effects

The photographer is the artist. Here, the capturing of the subject is not the main purpose. These images can be artistic statements. They have a stronger concept than the same image photographed in a traditional style

1012 Unclassified**Black/White photo classes****Same Description as the color classes**

1013	World In Motion
1014	Portrait Human
1015	Portrait Animal
1016	Wildlife
1017	Nature
1018	Landscape/ Scenery
1019	Candid
1020	Fireworks
1021	Still Life
1022	Action (Sports)
1023	Abstract
1024	Special Effects
1025	Unclassified

TORCHIA-HOLMES

REAL ESTATE AGENCY, L.L.C.

David Holmes, *Broker*

129 S. Pennsylvania • Columbus, Kansas 66725
 620-429-1330 • fax: 620-429-1570 • cell: 620-674-2183
www.torchia-holmes.com

DEPARTMENT Y 4-H/FFA/HYA

4-H/FFA/HYA FAIR FORMS

4-H/FFA/HYA events for the fair require pre-registration online

<http://cherokeecountyksfair.fairentry.com/>. Registration will be open June 1, 2026-June 15, 2026. Late registration with a \$25 fee will be accepted June 16, 2026 - June 19, 2026. After that date, you will not be allowed to participate.

All online entries will have guaranteed pre-assigned stall space. All livestock must be in place by 10:00 a.m. Tuesday, July 14th. All open registered livestock tattoos and registration papers will be checked after 10:00 a.m. on Tuesday, July 14th. A time and designated place will be posted. Early entries will be guaranteed space.

All youth (4-H/FFA/HYA) livestock exhibitors must check in with their species superintendent or County Agent to make sure their animals are correct in the entry book upon arrival at the fair.

4-H/FFA/HYA GENERAL REQUIREMENTS

The 4-H/FFA/HYA youth organizations strive to develop life skills. These skills will enable young people to meet the challenges of the adult world with confidence. Unless the young people are allowed to perform tasks necessary to learn these skills, the goal of developing capable people will not be met.

1. 4-H/FFA/HYA members are expected to wear appropriate show attire (no tank tops, halter tops, shorts, or open-toed shoes) when showing their animals: horse, dog, rabbit, swine, sheep, beef, dairy, and goats. (Ask yourself: would these clothes meet my school's dress code?) Cowboy hats are allowed to be worn in the show ring.
2. Premium Sale - if possible, 4-H/FFA/HYA members are encouraged to wear attire with their designated emblem (4-H/FFA/HYA).
3. Livestock arrival and departure - Early arrival of livestock is not encouraged. If any animals are to be left after midnight on Saturday, they must inform the 4-H Agent. **ALL** animals are to be removed by 12:00 p.m. on Sunday following the fair (unless being loaded out to local lockers), so cleanup can proceed.

CODE OF CONDUCT

ALL youth participating in the Cherokee County Fair are expected to follow them:

1. You are responsible for knowing the rules for each event.
2. Dress appropriately for each event. (See bullet point 1 under 4-H/FFA/HYA General Requirements)
3. Use language and manners that will bring respect to you and Kansas 4-H/FFA/HYA.
4. Know that the use of tobacco, alcohol, and non-prescribed drugs is illegal and prohibited at all 4-H/FFA/HYA events.
5. Model respect for others.
6. Treat program areas and vehicles with respect and care. You will be responsible for any damage, theft, and/or misconduct in which you participate.
7. Help others to have a pleasant experience by making every attempt to include all participants in the activities.

8. Live up to your highest expectations for yourself.
9. Harassment of any kind (for example: physical, social, emotional, sexual) is illegal and prohibited at all 4-H/FFA/HYA events.

Ribbon premiums for animal divisions are listed with each division.

Ribbon premiums for all non-animal classes are:

Purple - \$1.75 Blue - \$1.25 Red - \$1.00 White - \$0.75

4-H/FFA/HYA RULES & LIABILITY

Exhibits at the Cherokee County Fair are entered and displayed at the risk of the exhibitor. Those members who have exhibits of great sentimental and/or monetary value should carefully consider whether such exhibits should be exposed to the hazards of the fair. All precautions will be made to protect exhibits.

1. The 4-H State Fair Rules prevail for 4-H Classification except where modified. Exhibits that meet State qualifications will be designated by a state fair sticker.
2. 4-H & FFA members must belong to a Cherokee County 4-H or FFA Chapter. HYA must belong to an HYA Cherokee County camp.
3. All entries must be in place according to the general fair rules, and members must be enrolled in the project they are exhibiting, except where modified.
4. Non-livestock exhibits must be the work of the 4-H/FFA/HYA'ers and a result of the current year.
5. Purple denotes a superior exhibit; blue, an excellent; red, a good; white, a merit exhibit.
6. All 4-H/FFA/HYA members will compete in the same classes and compete against each other.
7. All 4-H/FFA/HYA members will be eligible to compete in open class, provided they meet open class requirements.
8. Each exhibit must be owned by the individual exhibitor. The exhibits must be shown by the exhibitor, except when permission is granted by the species superintendent or when a second animal is present. If a second animal is owned by the exhibitor, a substitute showman may be selected, but must be a current 4-H/FFA/HYA member within Cherokee County. An animal in showmanship must be shown in another class.
9. All 4-H/FFA/HYA exhibits will be judged as stated in the Calendar of Events in this premium book.
10. 4-H/FFA/HYA exhibits must be in place by 10:00 a.m., Tuesday, July 14th, unless stated otherwise under class requirements. Exhibits may be checked in between 8:00 am-10:00 am on Tuesday, July 14th. All exhibits are released on Saturday, July 18th, at 10:00 pm, or upon announcement by the 4-H Agent.
11. 4-H/FFA/HYA families will receive two parking permits. These will be distributed through the Extension Office beginning at noon on Monday of fair week.
12. Any minor caught with or using alcohol, tobacco, or any illegal substance will be asked to leave the fair. If the person is an exhibitor, they will forfeit all prize money, including premium from the livestock sale, and will have to remove all of their exhibits from the fair immediately.

MARKET LIVESTOCK RULES

1. 4-H/FFA/HYA livestock must comply with health regulations. No tranquilized, drugged, or needle injected for filling, animals will be allowed to be shown.
2. All market classes will be shown by weight rather than breed.
3. Family Nominations applies to: all eligible siblings or youth who legally reside in the same household, share the same legal address, and materially participate in the care of the project the majority of the time.

4. Each 4-H/FFA/HYA member will be limited to carry and show two animals of each species: 2 market beef, 2 market lambs, 2 market swine, 2 feeder calves, 2 market meat goats, 2 broiler pens, and 2 meat rabbit pens for the County Fair. Additional animals may be weighed and tagged for other shows. If you weigh in more than 2 animals at the first weigh-in, specify which 2 will be used for the market class.
5. Market swine, market lambs, market meat goats, feeder calves, and market beef may be females or castrated males.
6. No bulls, boars, bucks, or rams will be allowed to show or sell in the 4-H Division. Any male animal with evidence of testicles presents at the first weigh-in will not be allowed to participate in the project. Exception: Bucket calves do not have to be castrated.
7. All market animals will be ear tagged and weighed in at the initial weigh-in, except that Swine are only required to be tagged at the initial weigh-in. All goats & sheep must have scrapie tags at the first weigh-in. Dates are subject to change.

Initial Weigh-in Dates:

Market Beef:	February 14 th @ 8:00am-9:30am
Feeder Calves:	April 4 th @ 8:00am-9:30am
Market Swine:	April 4 th @ 8:00am-9:30am
Market Lambs and Meat Goats:	April 4 th @ 9:30am-11:00am
Bucket Calves:	May 29 th @ 8:00am-6:00pm

8. If the tag is lost, contact the 4-H Agent within 3 business days. If you arrive at the final weigh-in without a tag, your animal will not be eligible to show in a market class.
9. In the event that market livestock are killed or die due to uncontrollable activities (like dog attack) or have health-threatening conditions from such events that inhibit proper growth (not from parasites or inadequate feeding), or mobility (I.E. broken leg), they may be replaced if the event happened, within two weeks of initial weigh-in. The following process for replacement shall apply:
 - a. Exhibitor shall, within 4 days of the death of the animal, notify the county 4-H agent and/or the Cherokee County Extension Office.
 - b. Exhibitor must have the deceased animal examined by the fair board veterinarian.
 - c. Exhibitor must appear before the appeal and grievance committee.
 - d. Exhibitor must obtain an ear tag for the replacement animal within 2 weeks of approval from the appeal and grievance committee.
 - e. Replacement animal may not participate in the Rate of Grain contest.
10. All feeder calves must have been born on or after September 1 of the previous year. Feeder calves must weigh 300 to 750 lbs. at the initial weigh-in. Feeder calves must gain 1 pound a day and weigh 999 lbs. or less at final weigh-in.
11. All market beef must have been born on or after January 1 of the previous year. Market Beef must be less than 1,000 lbs. at the first weigh-in. Market Beef must gain 1.5 pounds a day.
12. Animals will only be weighed once at the initial weigh-in.
13. The official weight for all market livestock to determine the rate-of-gain contest and to determine if the animal sells will be on the date of the final official weigh-in. Animals can be weighed more than once to determine sale eligibility and show weight classification, but this must be done before the final weigh-in time for that species. If an animal has been unnaturally filled with water to make weight, that animal will be disqualified from the show and sale.



LOCAL CONNECTION. GLOBAL REACH.
OPTIC
COMMUNICATIONS



COLUMBUS
TELEPHONE COMPANY

CHEROKEE COUNTY FAIR

proud supporter



855-806-7325

optic-communications.com

 /OpticCommunications

 /OpticComm

 /company/optic-comm

224 S Kansas Street | Columbus, Kansas



119 W Maple St. - Columbus, Kansas

**Proud Supporter
of the 98th annual
Cherokee County Fair**

Rhinestones

Custom Vinyl

Embroidery

Screen Printing

Sublimation

& Much More!

Check us out on Facebook!

IT'S THE DEALER THAT MAKES A DIFFERENCE!



Columbus, KS
(620) 429-2200



Pittsburg, KS
(620) 231-2450



Parsons, KS
(620) 423-3673

MIKE CARPINO



LINCOLN

www.mikecarpinoford.com



Behind every farm or ranch is a family.

For over 80 years, we've worked shoulder to shoulder with farmers and ranchers, serving the unique needs of the ag industry. As a member of your community, we get to know you and your operation, providing comprehensive coverage for your farm, ranch, machinery, livestock — and so much more.

Call us today and find out why we're the #1 ag insurer.



Gracie Helms
Gracie.Helms@fbfs.com



Fawna Coons
Fawna.Coons@fbfs.com

Columbus | (620) 429-2678



It's your future. Let's protect it.®

**Farm & Ranch | Commercial Ag | Crop
Workers' Compensation | Succession Planning**

No. 1 ag insurer across our 8-state territory; 2018 SNL P&C Group - Farm Bureau Property & Casualty Insurance Company and Western Agricultural Insurance Company direct written premium. Farm Bureau Property & Casualty Insurance Company,* Western Agricultural Insurance Company,* Farm Bureau Life Insurance Company**/West Des Moines, IA. *Company providers of Farm Bureau Financial Services. PC166 (4-20)

14. The time market animals are to be weighed at the fairgrounds is as follows:
- | | |
|----------------------------------|--|
| Chickens: | Monday, July 13th, 6:00pm- 8:30pm |
| Swine: | Tuesday, July 14th, 8:00am- 10:00am |
| Feeder & Market Beef: | Tuesday, July 14th, 10:00am- 12:00pm |
| Sheep: | Tuesday, July 14th, 12:00pm-2:00pm |
| Meat Goats: | Tuesday, July 14th, 12:00pm-2:00pm |
15. In order to be eligible for the sale, all animals must be within the following minimum-maximum weight range when they arrive at the Fair.
- | | |
|----------------------------|--|
| Market Beef | 1,000 lbs. or more and have gained 1.5 lbs. per day |
| Feeder Calves | < 1000 lbs. and have gained 1 lbs. per day |
| Swine | 220 - 300 lbs. |
| Lambs | 90 lbs. or more & have a positive weight gain |
| Meat Goats | 50 lbs. or more & have a positive weight gain |
| Broiler Hens | minimum 3 lbs. or more |
| Rabbits | 3.5 to 5.5 lbs. |
16. Any animal, regardless of weight, can be shown. However, an underweight or overweight class will be created if necessary, and they will not be eligible to show for Grand Champion honors or for premium sale.
17. When making family nominations for livestock, you must state which animal belongs to whom before the animal steps on the scale at the final weigh-in. There will be no changes after the animal steps on the scale.
18. Each exhibitor, unless prior permission has been obtained from the 4-H Agent, must show his own animal in the conformation class to receive premium money. If two animals are entered in the same class, a fellow 4-H/FFA/HYA member may show one.

RULES AND REGULATIONS FOR 4-H/FFA/HYA MARKET LIVESTOCK SALE

1. Animals exhibited as Market livestock will be weighed in during the designated official fair weigh-in to determine if they meet the desired market weights. (Refer to arrival times under Market Livestock Rules.)
 - a. Only one animal will be sold per exhibitor. If two or more species are shown, the exhibitor must make the choice of which animal to sell. This must be reported to the 4-H Agent by 9:00 pm on Thursday night of fair week; otherwise, the highest-placing animal will be listed on the sale bill. Animals going through the Cherokee County Fair Premium sale can continue on for further exhibit and premium sales.
2. All livestock must be shown in their respective market classes to sell.
3. Sale order will be determined by the judge, beginning with the Grand & Reserve Champion. Then 1st Blue and down. Species order rotates each year.
4. All animals accepted in the sale must be sold for a premium to the highest bidder in the auction ring.
5. Auction of animal entries will start at 7:00 pm on Saturday of the fair.
6. Each exhibitor, unless he/she has obtained prior permission from the grievance committee, must be present to sell his/her animal at the Livestock Sale.
7. Each 4-H/FFA/HYA member who sells an animal at the sale will be required to purchase a "Livestock Buyer Plaque" to be given to the buyer of his/her animal and will be required to pay their part of a newspaper advertisement, which will list and thank all sale buyers.

ROUND ROBIN SHOWMANSHIP

The Round Robin Showmanship contest is sponsored by Farmer's Coop. The Senior and Intermediate Showmanship winners in beef, dairy cattle, sheep, horse, swine, meat goat, and dairy goat will compete in the round robin.

1. 4-H/FFA/HYA member must use their own same animal that was shown in the Showmanship Class.
2. The contest will be open to the grand intermediate and senior showmen of each livestock division. If an individual wins in more than one species, they must choose which animal they will show, and the reserve champion will be eligible in the other species. If there is no reserve champion to show, the grand showmanship animal will be brought in to show. Only a grand or reserve champion placing can show in the Round Robin.
3. Each showman will show all species of livestock beginning with the species in which he/she has been declared champion and will be scored on his/ her ability to present each livestock species to the judge.
4. A ring man will be designated to direct the individual showman as prescribed by the judge of the contest.
5. The round robin exhibitor in each livestock division will make the same animal he/she showed in winning the contest available to the other contestants participating in the contest.
6. It will be the responsibility of each participant to have his/her animal thoroughly cleaned and groomed prior to the contest.
7. No red ribbon can qualify for grand or reserve.
8. If an exhibitor chooses not to participate, they will forfeit their ribbon, ribbon premium, and any awards.
9. The winner is chosen based on a point system. The exhibitor with the highest points will receive Grand Champion, and the second-highest will receive Reserve Champion in their respective age categories.

Division Y1 Beef

Superintendent: KC Youngblood & Kim Scott

Committee: Jake Hall & Bennie Capron

PREMIUMS For all classes unless stated otherwise**Blue - \$4.50 Red - \$3.25 White \$1.75****Rules**

1. Exhibitors should refer to general rules governing 4-H/FFA/HYA livestock exhibits concerning 4-H/FFA/HYA premiums and animal health requirements.
2. Market beef and Feeder calves, regardless of breed and sex, will be shown by weight.
3. Awards will be given by the fair association to the Champion Female of each breed, provided there are 3 or more animals, exhibited by 2 or more exhibitors in each division.
4. Note: Calves can be shown in either the bucket calf class or Jr. Heifer class, but not both. Heifers shown in the feeder calf class cannot be shown in the age-respective heifer class.

Showmanship Classes

- 100 Sr. Beef Showmanship ages 14-18
 101 Int. Beef Showmanship ages 10-13
 102 Jr. Beef Showmanship ages 7-9

Market & Breeding Beef**Premiums****Blue - \$6.75 Red - \$5.50 White - \$3.75****For the following classes****Rules**

1. Market heifers must be pregnancy checked up to 30 days prior, with vet certification proof provided to the superintendent at the final weigh-in.
2. Bucket calf exhibitors must be 10 years or younger and can only enter one bucket calf.
3. Bucket calves must be born after January 1.
4. Bucket calf exhibitors will not show in Showmanship; their showmanship will be evaluated within their class.

- 103 Bucket Calves
 104 Feeder Calves
 105 Market Beef

Breeding Beef

ANGUS-SHORTHORN-LIMOUSIN-HEREFORD-CHAROLAIS-SIMMENTAL-GELBVIEH-
 OTHER BREEDS-RED ANGUS AND CROSSBRED

- 106 Jr. Heifer Calves – calved after Jan 1 current year
 107 Sr. Heifer Calves – calved between Sept 1 and Dec 31 prior year
 108 Summer Yearling Heifers – calved between May 1 & Aug 31 prior year
 109 Jr. Yearling Heifers – calved between Jan 1 & Apr 30 prior year
 110 Sr. Yearling Heifers – calved between Sept 1 & Dec 31 two years prior
 111 2 yr. old heifers – calved between Jan 1 & Aug 31 two years prior
 112* Cow/Calf Class – calf born after Jan 1 this year
 113* Aged Cow Class – born before Jan 1 two years prior

*a cow may not be shown in both classes 112 & 113

Division Y2 Dairy Cattle

Superintendent: Jamie Walsh

Committee: Kylee Sommer

PREMIUMS For all classes unless stated otherwise**Blue - \$4.50 Red - \$3.25 White - \$1.75**

Awards will be given to the champion female of each breed, provided there are 3 or more animals exhibited by two or more exhibitors.

JERSEY-HOLSTEIN-GUERNSEY-BROWN SWISS-AYSHIRE- MILKING SHORTHORN**Showmanship Classes**

- 200 Sr. Dairy Showmanship ages 14-18
 201 Int. Dairy Showmanship ages 10-13
 202 Jr. Dairy Showmanship aged 7-9

Breeding Dairy

- 203 Dairy Calf, born after Mar 1 this year
 204 Heifer Intermediate calf, Dec 1 prior year to Feb 28 this year
 205 Heifer Calf, Sept 1 prior year to Nov 30 prior year
 206 Heifer, Jr. Yearling, Mar 1 prior year to Aug 31 prior year
 207 Heifer, Sr. Yearling, Sept 1, two years prior to Feb 28 prior year
 208 Cow, Jr. 2-year-old, Mar 1 to Aug 31 two years prior
 209 Cow, Sr. 2-year-old, Sept 1 to Feb 28 two years prior
 210 Cow, 3 years old in milk, Sept 1 to Feb 28 three years prior
 211 Cow, 4 years old in milk, Sept 1 to Feb 28 four years prior
 212 Cow, 5 years and older in milk, Before Sept 1, 5 years prior
 213 Cow, 3&4 years old, dry, Sept 1 to Aug 31, 3 & 4 years prior
 214 Cow, 5 years and older, dry, before Sept 1, 5 years prior

Division Y3 Dairy Goats

Superintendent: Jamie Walsh

Committee: Kylee Sommer

PREMIUMS For all classes unless stated otherwise**Blue - \$4.50 Red - \$3.25 White - \$1.75**

Any Recognized Breed and Crossbreed

Showmanship Classes

- 300 Sr. Showmanship ages 14-18
 301 Int. Showmanship ages 10-13
 302 Jr. Showmanship ages 7-9

Breeding Dairy Goats

- JUNIOR DOES –Never in Milk
 303 0 to under 3 months
 304 3 to under 6 months
 305 6 to under 9 months
 306 9 to under 12 months

Senior Does

- 307 12 to under 18 months
 308 18 to under 24 months
 309 24 to under 36 months
 310 36 to under 48 months
 311 48 months and older

Division Y4 Dog

Co-Superintendent: Anne E. Sharp & Kara Alexander

Committee: Josephine Elliott

PREMIUMS For all classes unless stated otherwise
Purple - \$2.25 Blue - \$2.00 Red - \$1.75 White - \$1.25

Rules

1. The dogs are to be put through the basic commands.
2. Dogs will not be exhibited during the week. They will be brought only for the judging, Tuesday of fair week.
3. Check-in will begin at 12:00-12:45 pm Judging will begin at 1:00 pm
4. The Cherokee County 4-H Dog Project, Cherokee County Extension Service and American Legion will not be responsible for any loss, theft, injury, or death of dogs entered in the show or for exhibitor injury.
5. State 4-H Dog Show Immunization Record (MG-34rev) should be required at all shows. Proof of rabies vaccination signed by a graduate; licensed, accredited veterinarian must be presented to the show committee at registration on day of show to be eligible to compete. Other required vaccinations are: Distemper, Hepatitis, Parvovirus, Parainfluenza and Bordetella. Other recommended vaccinations are Leptospirosis, Coronavirus.
6. Any abuse of dogs on the ground or in the ring will result in disqualification.
7. No dog in season will be allowed to show in showmanship, obedience or Agility and must be removed from the show arena grounds immediately.
8. Any dog with a contagious, communicable or infectious disease or condition, in the judgement of the attending veterinarian, cannot be shown. It must be removed from the show arena grounds immediately. This also includes warts, ringworm, lice, and mange.
9. **Good sportsmanship** shall be observed at all times. **The Judge's decision is final.** Poor sportsmanship may lead to loss of ribbon, class dismissal or disqualification from show as determined by judge and show committee. Any protest should be made in writing to the show committee.
10. Any dog fouling the ring will automatically receive a white ribbon.
11. Owners should collect all dog waste in plastic bags and put in trash. This applies to anywhere on the fairgrounds.
12. Any dog that is overly aggressive or potentially dangerous to people or other dogs will be disqualified and asked to leave the show grounds.
13. Show rules will follow, the guidelines of the Kansas 4-H Dog show Rulebook.
14. All classes with (**) are classes that you can qualify for state. You must be 9 as of Jan. 1, current year to go to state.

Showmanship Classes

To qualify for the Kansas State Fair Dog Show, 4-H'ers must be awarded a purple or blue ribbon at a county or Invitational 4-H Show.

400**	Sr. Showmanship ages 15-18
401**	Int. Showmanship ages 12-14
403**	Jr. Showmanship ages 9 & 11
404	Pre-Jr. Showmanship ages 7 & 8

Obedience, Rally Obedience, and Agility

At any time that the leader, parent and member agree that the 4-H'er and dog are ready to move to the next level, they may; but once that is done, they cannot regress to a lower level/class.

Obedience

Obedience qualifying a score of 170 points or greater is a qualifying score with at least 50% in each exercise. Once a 4-H'er scored 170 points or greater with the same dog under two different certified judges. The member must advance to the next obedience level at the start of the next 4-H year.

405	Pre-Novice (All exercises done on leash)	1308**	Open A
		1309**	Open B
406**	Novice	1310**	Utility A
407**	Graduate Novice	1311**	Utility B

(If entering Utility A or B, please bring your own equipment.)

Rally Obedience

Rally Obedience qualifying for Kansas State Fair Dog show must be awarded a blue or purple ribbon at a county level or Invitational Show, for that class. To move from one level to the next level you must have two blue or purple ribbons under two different certified 4-H judges.

412	Level 1 (All exercise done on leash)
413**	Level 2 (Off Lead)
414**	Level 3 (Off Lead)

Agility

Agility qualifies with scores of 170 points or greater without any non-qualifying deductions. To move from one class to the next class you must have two blue or purple ribbons under two different certified 4-H judges, with a qualifying run.

All classes will be divided into three height divisions.

Division I Dogs under 15 inches at withers – jump 8 inches

Division II Dogs 15-20 inches at withers – jump 12 inches

Division III Dogs 20 inches and over at the withers – jump 16 inches

415	Puppy Class (All obstacles will be done on lead)
416	Pre-Agility (All obstacles will be done on lead)
417**	Agility I Novice
418**	Agility II
421**	Agility III
420**	Agility IV

Division Y5 Horse

Superintendents: Nancy Herrenbruck & Jennifer Leeper

Committee: Jake Hall

PREMIUMS For all classes unless stated otherwise

Purple - \$3.75 Blue - \$3.25 Red - \$2.25 White - \$1.75

Species Health Requirements & Rules

1. Exhibitors and horses show at their own risk.
2. Stallions one year and older are barred.
3. The age of a colt is determined as of Jan. 1 in the year at which it is born.
4. Horse Identification Certificate must be turned in by June 1st each year.
5. Horses shall meet the general health requirements. A negative Coggins test within 12 months for equine infectious anemia (EIA) is required.

6. The same animal cannot be shown in Miniature pony, Pony and horse Classes. No horse 56" and over, or a registered horse, other than pony breeds, can be shown as ponies. Pony class will be 36" to under 56", Miniature class is 35" and under.
7. Points in performance and timed events are scored on one horse per class, if an exhibitor enters two horses, points are given for highest placing.
8. Appointments- Refer to Handbook for Kansas 4-H Horse Shows and Events.
9. Show Attire: Western Classes- Exhibitor must wear hat, cowboy boots, long pants, and a long-sleeved shirt or blouse. Hats are optional in timed events. If the hat is lost a 2-second penalty will be assessed to the final time. T-shirts with sleeves are allowed for timed events. Shirts cannot be tank-top style.
10. English Classes –English attire required except Jacket option is at Judges discretion.
11. Examples of legal bits for English, Western, and Times events can be found in the Kansas 4-H Horse Show Rule Book. If you do not have a legal bit then you will be asked to change into a legal bit or be disqualified from classes that you do not have the correct equipment.

Showmanship Classes

500	Sr. Showmanship ages 14-18
501	Int. Showmanship ages 10-13
502	Jr. Showmanship ages 7-9

Halter Classes

503	2026 Foals	509	2023 Geldings
504	2025 Fillies	510	2022 & Before Mares
505	2025 Geldings	511	2022 & Before Geldings
506	2024 Fillies	512	Ponies (36"-56")
507	2024 Geldings	513	Miniature Horse (35" & under)
508	2023 Mares		

Performance Class

514	Hunter under saddle ages 14-18		
515	Hunter under saddle ages 7-13	530	Western Horsemanship: ages 7-13
516	Hunt Seat Equitation ages 14-18	531	Western Horsemanship: 1 st & 2 nd year rider
517	Hunt Seat Equitation ages 7-13	532	Pony Horsemanship
519	Western Pleasure ages 14-18	533	Reining ages 14-18
520	Western Pleasure ages 7-13	534	Reining ages 7-13
521	Pony Western Pleasure	535	Pony Reining
522	Working Ranch Horse ages 14-18	536	Pleasure Pairs (List Partner on entry)
523	Working Ranch Horse ages 7-13	537	Pony Poles
524	Pony Working Ranch	538	Pole Bending ages 14-18
525	Trail ages 14-18	539	Pole Bending ages 7-13
526	Trail ages 7-13	540	Pony Barrels
527	Pony Trail	541	Barrel Racing ages 14-18
528	Exhibition Trail Miniature Horse	542	Barrel Racing ages 7-13
529	Western Horsemanship: ages 14-18	543	Pony Flags
		544	Flag Class ages 14-18
		545	Flag Class ages 7-13
		546	Goat Tying ages 14-18
		547*	Goat Tying ages 10-13

548*	Goat Tying ages 7-9	551*	Break Away Roping ages 7-13
549	Goat Stripping 7-9	552*	Team Roping ages 14-18
550*	Break Away Roping age 14-18	553*	Team Roping ages 7-13

- Classes with an * next to the number are open only to those who have prior experience and/or will be offered only if stock can be secured for these classes.
- Goat stripping is not eligible for pts. Participants cannot enter in both goat tying and goat stripping
- In timed events, a participant can ride a 2nd horse, but will only receive one premium and points for the fastest time.
- Points towards high point performance will be given for Trail class, Hunter classes, Western Pleasure, Horsemanship, Reining and Working Ranch. Points for timed events will be given in pole bending, barrels, flag class, and goat tying.
- For high points, points will be awarded based on # of participants in each class. If the class has 6 participants, 6 pts. will be awarded to the 1st place participant in the class, 5 to the 2nd place participant, etc. If a tie happens for high points it will first be broken by the highest placing, if need be, then on premiums awarded.
- Neil Hale and Jaycee Westervelt awards will be based on the year's project.
- Disqualification and no time rides will receive no points.

Division Y6 Meat Goat

Superintendent: Kylee Sommer

PREMIUMS For all classes unless stated otherwise

Blue - \$4.50 Red - \$3.25 White - \$1.75

Species Health Requirements

Goats originating in Kansas and from other states must meet the general requirements. In addition to the general requirements, goats shall:

1. Any goat showing signs of sore mouth or infectious disease will not be allowed on grounds.
2. All must be identified with an official USDA premise ID tag, visible tattoo, or microchip.
3. Market goats must have a scrapie tag at first weigh in.
4. All goats are required to have scrapie tags.
5. Bracing will be allowed, but all 4 feet must remain on the ground.
6. **Classes 604 & 605 will be broken by weights. All does must be weighed at the fair during weigh times.**

ADGA Sanctioned Breeds, including AOB, will be allowed.

Showmanship Classes

600	Sr. Showmanship ages 14-18
601	Int. Showmanship ages 10-13
602	Jr. Showmanship ages 7-9

Market Class

603*	Market Meat Goat
------	------------------

Breeding Classes

604	Doe, under 1 year
605	Doe, 1 year & over

*Prior to Final Weigh-in Class 603 must be slick shorn with an equal amount of hair above the knee & hock (head & belly excluded). A maximum of 3/8 inch hair length is permitted. Horns: goats are suggested to be dehorned. If horns are kept, they must be tipped to not less than the 4.5 to 5.5 mm in diameter, and rounded. All market goats must have milk teeth in place. Meat goats shown in class 603 cannot be shown in a doe class.

Division Y7 Poultry

Superintendent: Rosie Heistand & Kristen Shepard
PREMIUMS For all classes unless stated otherwise
Purple - \$1.75 Blue - \$1.25 Red - \$1.00 White - \$0.75

Species Health Requirements & Rules

1. Chickens must be blood tested if the State requires. The Pullorum Typhoid test is for exhibition, exotic, and game birds, but excludes waterfowl. Testing must be done within 90 days of the county fair; this will fulfill the requirements for both the county & state fairs. Columbus Veterinary Clinic will test birds free of charge on a date to be announced, unless verified hatchery or under 6 months old.
2. All poultry and waterfowl must have a numbered leg band on a leg before being placed in a coop. No exceptions. Available at testing, if not testing, please contact the Superintendent.
3. Weigh-in for market class will be at 9:00 pm on Monday of Fair week. No switching of birds to other pens after weigh-in.
4. Old birds are those hatched in the previous calendar year; young birds are hatched in this calendar year.
5. Standard cooping will be furnished by the Fair Association.
6. All eggs will be gathered by the fair Superintendent/or committee of the division and disposed of.
7. **Each exhibitor is limited to a total of 10 pens.**
8. Exhibitors should be checked in from 6:00-8:30 p.m. on Monday of Fair week.
9. The comparison system of judging, as outlined in the American Standard of Perfection, will be used in placing awards. A.P.A. rules will govern protests.
10. No birds will be allowed in the department without being entered.
11. The same birds cannot compete in both single and pen classes.
12. No animals shown in 4-H/FFA/HYA market classes (meat pen) will be allowed to show in breeding classes the same year. They may be used for showmanship.
13. Dirty and/or sick birds will not be admitted. The superintendent or his/her assistant shall be the judge as to what constitutes a dirty/sick bird. Healthy birds are not to be removed from the exhibit barn without permission from the one in charge. A person violating any of the above rules will forfeit any prize money that may be awarded.
14. Each exhibitor will be responsible for the feeding, watering, and cleaning of his/her own pens.
15. Please contact the leader/superintendent for help IDing birds if needed before making entries. Please specify the variety and class number, and provide the band number of the specimen. On pen entries, specify old or young. After an entry is transferred to the entry book, no changes will be made.

Showmanship Classes

700	Sr. Showmanship ages 14-18
701	Int. Showmanship ages 10-13
702	Jr. Showmanship ages 7-9

Market Classes

- 703 Broiler Class (pen of 3) up to two pens. Broilers will be weighed at 9:00 p.m. Monday night after check-in. Broilers should be 3 chickens of equal size and likeness. Broilers **MUST** weigh a minimum of 3 pounds.

Breeding Classes

- 704 Large Fowl Cock, male 1 year and older
 705 Large Fowl Hen, female 1 year and older
 706 Large Fowl Cockerel, male less than 1 year old
 707 Large Fowl Pullet, female less than 1 year old
 708 Bantam Cock, male 1 year and older
 709 Bantam Hen, female 1 year and older
 710 Bantam Cockerel, male less than 1 year old
 711 Bantam Pullet, female less than 1 year old
 712 Pigeon Cock, male 1 year and older
 713 Pigeon Hen, female 1 year and older
 714 Pigeon Cockerel, male less than 1 year old
 715 Pigeon Pullet, female less than 1 year old
 716 Turkey (all varieties) 1 bird wither sex
 717 Ducks (all varieties) 1 bird of either sex
 718 Geese (all varieties) 1 bird of either sex
 719 Other Fowl
 720 Dual Purpose Production Pullet- Pen of 3
 721 Dual Purpose Hens- Pen of 3

Division Y8 Rabbits

Superintendent:

Committee:

PREMIUMS For all classes unless stated otherwise
Purple - \$1.75 Blue - \$1.25 Red - \$1.00 White - \$0.75

1. No rabbit showing signs of illness may be shown.
2. Exhibitors will be limited to ten entries.
3. When making an entry, the exhibitor must specify on the entry form the breed, variety (color), sex, age class, and tattoo of each individual rabbit.
4. Each exhibitor will be responsible for the feeding, watering and cleaning of his/her own individual pens.
5. Exhibitors should be present during judging to remove rabbits from their cages, or make arrangements with another person to do it for them. YOU are responsible for seeing that your rabbit gets judged.
6. All rabbits must be permanently and legibly tattooed in their left ear before fair check in.
7. All rabbits will be divided into classes by age and judged according to their breed standard as listed in the ARBA "Standard of Perfection".

Pre-Junior - (under 3 months) classes only available in the following breeds: Beveren, Blanc de Hotot, Californian, Champagne D'Argent, Checkered Giant, American Chinchilla, Giant Chinchilla, Cinnamon, Crème D'Argent, New Zealand, and Palomino.

Juniors - (under 6 months) for breeds other than those already listed.

Intermediate - (6-8 months) Classes only available in the following breeds: American, Giant Angora, Beveren, Blanc de Hotot, Californian, Champagne

D'Argent, Checkerd Fiant, American Chinchilla, Giant Chinchilla, Cinnamon, Crème D'Argent, Flemish Giant, English Lop, French Lop, New Zealand, Palomino, Satin and Silver Fox.

Senior – 6 months and older for breeds other than those listed as having intermediate classes, eight months of age or over for breeds having intermediate classes.

8. No animals shown in 4-H/FFA/HYA market classes will be allowed to show in breeding classes in the same year.
9. Check-in for rabbits will be on Monday of fair week, between 6:00-8:30 PM
10. Crossbreeds can only be shown in 4-H/FFA/HYA Classes.

Showmanship Classes

- 800 Sr. Showmanship ages 14-18
 801 Int. Showmanship ages 10-13
 802 Jr. Showmanship ages 7-9

Market Class

- 803 Meat Pen. Three (3) rabbits, all one recognized breed and variety, minimum weight 3.5 pounds each, maximum weight 5.5 pounds each and not over 70 days of age. Rabbits will be judged on their meat qualities, condition and uniformity. (Counts as one entry).

Breeding Classes

- 804 Senior buck – eight months of age and over for breeds with intermediate classes; six months and over for all other breeds.
 805 Senior Doe – eight months of age and over for breeds with intermediate classes; six months and over for all other breeds.
 806 Intermediate buck – only breeds listed above with intermediate classes.
 807 Intermediate Doe – only breeds listed above with intermediate classes.
 808 Junior buck – under six months of age.
 809 Junior Doe – under six months of age.
 810 Pre-junior buck – only breeds listed above with pre-juniors.
 811 Pre-junior Doe – only breeds listed above with pre-juniors.

Division Y9 Sheep

Superintendent: Jamie Walsh

Committee: Mike Colbert

PREMIUMS For all classes unless stated otherwise

Blue - \$4.50 Red - \$3.25 White - \$1.75

HAMPSHIRE-SUFFOLK-DORSET-SOUTHDOWN-MONTADALE-ALL OTHER BREEDS

1. All sheep must meet the general requirements. In addition to the general requirements, sheep shall:
 - a. Be free of any signs of "sore mouth," infectious skin lesions (ringworm)
 - b. Be free from "club lamp fungus"
2. All sexually intact ewes must be identified with a USDA premise ID tag
3. Market classes will be shown by weight.
4. Market lambs must have an official 4-H ear tag and have been weighed in for the first time.
5. At the time of check in, all market lambs must:
 - o Be "slick shorn" above the knee and hock joints.
 - o Have lamb teeth in place.
6. Ewe lambs shown in the market class cannot be shown in the breeding class.
7. Awards will be given to the Champion Ewe of each breed, provided there are 3 or more exhibited by 2 or more exhibitors.

Showmanship Classes

- 900 Sr. Showmanship ages 14-18
 901 Int. Showmanship ages 10-13
 902 Jr. Showmanship ages 7-9

Market

- 903 Market Lamb Class

Breeding Classes

- 904 Breeding Ewe Lamb (under one year of age)
 905 Ewe (over one year of age)

Division Y10 Swine

Superintendent: Clark Hall

Committee: Albert Welch

PREMIUMS For all classes unless stated otherwise

Blue - \$4.50 Red - \$3.25 White - \$1.75

Rules

1. All Market hogs, regardless of breed, will be shown by weight.
2. A gilt shown in market hog classes cannot be shown in gilt classes.
3. All male swine are to be castrated.
4. Prizes will be awarded by the Fair Association to the champion female of each breed, provided there are 3 or more animals exhibited by two or more exhibitors in each division.

Showmanship Classes

- 1000 Sr. Showmanship ages 14-18
 1001 Int. Showmanship ages 10-13
 1002 Jr. Showmanship ages 7-9

Market

- 1003 Market Hog

Breeding Classes

- 1004 Gilt farrowed before January of this year
 1005 Gilt farrowed during January this year
 1006 Gilt farrowed during February this year
 1007 Gilt farrowed during March this year
 1008 Gilt farrowed during April this year
 1009 Sow & litter or just Sow

Division Y11 Aerospace/Rocketry

Superintendent: Christina Martin

Rules

1. Each rocket must have been flown prior to the fair.
2. Rockets may or may not be exhibited on their launching pad. If exhibited without the launching pad, they must be able to stand freely by themselves. Wooden or metal support rods must not extend past the tip of the nose cone.
3. The 4-H Rocket Exhibit Information form must be completed and glued to an 8-1/2" x 11" envelope. Place the plans for the rocket inside the envelope.
4. Photographs are also required with the exhibit. Place one 8-1/2" x 11" page of photographs, only one side covered, inside the envelope. One or more photographs of the rocket at the launch site are required.
5. Photograph showing rocket at the moment of ignition is preferred.

6. Photograph should be mounted on one single-sided 8-1/2" x 11" page, at least one page but not more than five.
7. Angles of the fins must fit a plus or minus two-degree variation.
8. Exhibit must be smooth and uniform, properly assembled and painted according to accompanying plans.
9. Engines and igniters are not permitted with the exhibits.
10. Beginner kits with prefabricated plastic fin assemblies and prefinished rockets requiring no painting are not acceptable.
11. Exhibitors who exhibit a rocket using a size E engine or larger will be required to provide National Association of Rocketry (NAR) membership number on the exhibit information sheet.

*** Please refer to the Kansas State Fair Handbook for a complete list of rules.**

CLASS DESCRIPTION OF CLASS

1100	Rocket made from a kit. Include plans
1101	Scale Model Rocket. Made from a kit, includes plans.
1102	Rocket designed by exhibitor: not merely a modification of an existing kit. Include original plans.
1103	Scale Model Rocket designed by exhibitor: not merely a modification of an existing kit. Include original plans and stability testing.
1104	Rocket designed by 2 or more exhibitors, not merely modification of an existing kit rocket, including original plans.
1105	Mid-power rocket made from kit or original design
1106	High-power rocket made from kit or original design.
1107	Educational Display, Notebook, or Poster Board

Division Y12 Agronomy

Superintendent: David Holmes

Rules

1. Hybrids & Varieties must be stated on label.
2. All plant materials must be grown and/or collected by the exhibitor; not purchased.
3. All classes calling for a gallon sample may have 2 1/2x3 in. diameter Styrofoam cylinder places in the gallon container to reduce the amount of grain to about three quarts.
4. Only one entry per variety

CLASS DESCRIPTION OF CLASS

1200	Corn- Ten ears or one gallon jar that hasn't been entered in prior years
------	--

Grain Sorghums

1201	Hybrid Grain Sorghum – 10 head exhibit
1202	Hybrid Forage Sorghum – Exhibit to consist of the entire plant, no roots. 5" bundle, tied
1203	Other Forage Sorghum – Exhibit to consist of the entire plant, no roots. 5" bundle, tied

Use a 1-gallon sample

1204	Soft Red Winter Wheat, variety or hybrid must be named
1205	Hard Red Winter Wheat, variety or hybrid must be named
1206	Hard White Wheat, variety or hybrid must be named

1207	Alfalfa seed
1208	Oats seed
1209	Barley seed
1210	Brome Grass seed
1211	Other Tame Grass seed
1212	Soybeans
1213	Miscellaneous Crop – Exhibit to consist of one gallon sample of seed or 10 heads produced from current project.

CLASS DESCRIPTION OF CLASS

1214	Alfalfa – Exhibit to consist of one flake or slice from a rectangular bale, or a 10” section cut from a round bale. The flake or slice should be approximately 6 inches in thickness and tied in two directions.
1215	Grass hay 10” flake or slice, 6 inches thick and tied in two directions.
1216	Soybeans – bundle of five plants grown during current year.

Sunflowers

1217	Confectionery Heads – 3 heads must be submitted.
1218	Confectionery Seeds in a 1-gallon jar must be submitted.
1219	Oil Seed heads – 3 heads must be submitted.
1220	Oil seeds in a 1-gallon jar must be submitted.

Division Y13 AG Mechanics

Co-Superintendent: Jacob Larison & K.C. Youngblood

Exhibits in this department will be shown outdoors. Displays in this department will consist of examples of labor-saving devices and/or examples of farm machinery and equipment that have been constructed, repaired, reconditioned, or renovated.

1300 Any Welding Project

*** Refer to the Kansas State Fair Handbook for rules**

***For the county fair, exhibits will be divided into small or large projects (Determined by the judge). If you plan to exhibit at the Kansas State Fair, make sure you refer to the Kansas State Fair Handbook for complete rules and classes.**

Division Y14 Astronomy

Superintendent:

ASTRONOMY

***Refer to the Kansas State Fair Handbook for rules**

CLASS DESCRIPTION OF CLASS

1400	Telescope made from a kit
1401	Telescope made from the original design
1402	Astronomy Educational Display, Notebook, or Poster

Division Y15 Building Block Engineering

Superintendent:

Rules for all classes

1. 4-H members must be currently enrolled in the Kansas 4-H Building Block Engineering project to exhibit in this division.
2. Each exhibitor may enter 4 exhibits. Exhibits must have been constructed during the current 4-H year.
3. Total exhibit dimensions may not exceed 2 feet high, by 2 feet wide, by 2 feet deep and minimum dimensions of 6 inches wide and deep.
4. All exhibits should be placed in a sturdy see through enclosure with a top, bottom, and 4 sides. This is to keep exhibit parts from being “scattered to parts unknown” at the fair. The outer dimensions of the enclosure do not count for the total exhibit dimensions.
5. All components used in construction should be dust free, clean, free of chips, scuffs, or cracks
6. The primary building component should be interlocking blocks, commonly referred to by the brand name of Lego®
7. Other architectural components can be integrated into dioramas to illustrate architectural aspects that may be difficult to convey with traditional interlocking blocks.
8. The use of existing “store bought” sets for major architectural elements of the display is not allowed, use of figurines from sets is allowed as are using individual bricks to create something different than the architectural component of the set it came from.
9. Displays must have significant architectural components (walls, windows, doors, roofs, canopies flying buttresses, etc.), landscapes are discouraged.
10. Architectural elements should have a consistent look, walls with no pattern or consistency will be deducted one ribbon placing.
11. Gaps or cracks should not be visible between assembled blocks
12. Doors should open and close, windows can be either fixed or open and close.
13. Vehicles that are intended to stay in a single place should be affixed to base plates with sticky tack, hot glue, or other method.
14. Reveals that show the inside of a structure are acceptable, such as only having three walls to allow an unobstructed view into a room.
15. Mechanical enhancements or motion elements that add motion to the diorama are acceptable and encouraged. If used judges should be able to use them and instructions should be provided for operation.
16. Artistic designs with no architectural design/components are not permitted and two ribbon placings will be deducted.
17. The exhibitor’s name(s) and county or district must be tagged or labeled in a prominent location on the display.
18. Each exhibit must include an Architectural Block Construction information packet. Entry of just a packet without an accompanying exhibit is not a sufficient exhibit.
19. Each exhibitor is required to complete the “4-H STEM Architectural Block Construction Exhibit Information Form” which is available through your local K-State Research and Extension office or at www.STEM4KS.com. This form must be attached to the outside of a 10” x 13” manila envelope. Do not tie the envelope to the exhibit.

20. Each exhibit information packet should include the following items:
 - a. At least one drawing of the desired architecture on graph paper, multiple views (top, front, side) are preferred
 - b. 1 to 5 pages of photos showing work on the exhibit, preferably from a beginning state to final or completed state
 - c. If appropriate operating instructions for mechanical portions of the diorama

*** Please refer to the Kansas State Fair Handbook for a complete list of rules.**

CLASS DESCRIPTION OF CLASS

- | | |
|------|---|
| 1500 | Interlocking brick diorama built from a kit. Only open to 7–9-year-olds. Does not qualify for state fair. |
| 1501 | Interlocking brick diorama built from scratch. |
| 1502 | Educational Display, Notebook, or Poster |

Division Y16 Computer Science

Superintendent:

- | | |
|------|--|
| 1600 | Computer program, application, app, script, or coded system that is new and unique (not merely a file run in a program, such as a 'word document' or a picture drawn in 'Microsoft Paint'). |
| 1601 | Coded website built entirely by the 4-H Member (not using a pre-made template generator such as Wix or Squarespace). Items in this class could be coded in HTML, CSS, Javascript, Wordpress, or other web-based programming languages or platforms |
| 1602 | Microcontroller or microcomputer application - a small circuit board that is programmed to accomplish a specific task (projects built and programmed using Raspberry Pi, Arduino, etc.) |

***Please refer to the Kansas State Fair Handbook for a complete list of rules.**

Division Y17 Electric & Renewable Energy

Superintendent: Galen Zook

1. Each Electronics & Renewable Energy exhibit must include a "4-H Electronics & Renewable Energy Information Form" which is available through your local K-State Extension Office or at <http://electric.engtech4ks.com/>. This form must be attached to the outside of a 10" X 13" manila envelope. You must also include a wiring diagram or schematic. Place them inside the manila envelope. For notebooks, display boards, and posters, no additional exhibit information is required; no manila envelope is needed for these exhibits.
2. Items that have been in use should be cleaned for exhibit.
3. All electrical exhibits' wiring and connections must be accessible for examination by the judges. Sealed exhibits that cannot be opened for inspection are not acceptable.
4. Lithium batteries must be accessible or removable in exhibits for safety purposes. The exhibit cannot contain a locked compartment housing a lithium battery.
5. The National Electric Code (NEC) will apply for judging.
6. A sheet of operating instructions must be furnished and included in the manila envelope for any exhibit that is not self-explanatory.
7. Projects (classes 1700-1702) must be operable using only 110 or 120V AC or battery power. If battery power is required, batteries must be furnished.

8. Any project with a complexity of size or electronics must have (a) instructions for assembly and use and (b) if it requires special test equipment beyond a screwdriver or multimeter, it should be available at the time of judging for actual testing of the exhibit.
9. No hand-dipped solder may be used on exhibits.
10. If a safety violation is noted by the judges, superintendent, or other staff, the exhibitor's exhibit, at the judge's discretion, may receive a reduced ribbon placement or disqualification.

CLASS DESCRIPTION OF CLASS

ELECTRICAL AND ELECTRONICS

- 1700 AC Electric: Electric projects with a 110 or 120 V alternating current (AC) power source. Some project examples are household wiring demonstrations, small appliances extension cords, trouble lights, indoor or outdoor wiring boards, or shop lights. Projects may be a restoration or original construction. The project must be operational and meet minimum safety standards. AC projects must be 110/120 V, no 240 V exhibits are allowed, and must be constructed such that the judges have wiring access to examine the quality and safety of workmanship.
- 1701 DC Electric: Electric projects with a battery or direct current power source. This class includes electric kits or original projects. This class also includes demonstration DC powered project. Examples include: wiring two-way or three-way switches, difference between series/parallel lighting circuits or wiring doorbells switches. All DC electric projects must include batteries supplied by the 4-H member. Projects must be constructed such that the judges have access to examine the quality of wiring workmanship.
- 1702 Electronic: Electronic projects with a battery or direct current power source. This class includes electronic kits or original projects. Examples include radios, telephones, toy robots, light meters, security systems, etc. They may be constructed using printed circuit board, wire wrap, or breadboard techniques. Include instruction/assembly manual if the exhibit is from a kit. Include plans if an original project. Projects must be constructed such that the judges have access to examine the quality of wiring workmanship.
- 1703 Newly built or repaired computers. This class is for newly built or repaired computers (laptop or PC) and allows Exhibitors to demonstrate skills integrating the various parts of a computer into a single unit. Displays should show either a fully functional computer or show what the individual components do. The display should be free of dust and cabled neatly. Fully functional computers should boot up and do not need to include a monitor, keyboard, or mouse at the State Fair.
- 1704 Educational Displays and Exhibits: The display or exhibit should illustrate one basic idea. This class includes any educational displays, exhibits or science fair type projects which DO NOT have a power source, i.e. exhibits, posters or displays of wire types, conduit types, electrical safety, tool or motor parts identification or electrical terminology. Educational displays and exhibits must be legible from a distance of four feet, using a maximum tri-fold size of 3' x 4'.

Alternative ENERGY (A form of energy derived from a natural source, such as the sun, geothermal, wind, tides or waves) All exhibits in this division are limited in size to standard, tri-fold, display boards (36" X 48") and items may not extend beyond 12" from the back board. All displays must be self-standing.

- 1705 EDUCATIONAL DISPLAY - Create an exhibit that addresses a focused topic related to power generated from a renewable energy source. The purpose of the exhibit is to inform and create awareness.

- 1706 EXPERIMENT - Display an experiment addressing a problem or question related to power generated from a renewable energy source. Include hypothesis, background research, variables, a control, data, findings, conclusions and recommendations for future study.

Division Y18 Entomology

Superintendent: Bennie Capron

Rules

1. 4-H/FFA/HYA members may choose to exhibit in the Collection or Educational class for each phase, or both. Individual entries are to be placed in Plexiglass covered boxes 18in.x24in.x3in. (Maximum). See the specific phase for box and specimen number limitations. The preferred method is to arrange the insects in groups or rows parallel to the short sides of the box. Specimens are to be arranged in the box according to Order.
2. Each exhibitor is required to identify each box by placing an identification label bearing exhibitor's name and county and the class. One label goes in the upper left-hand corner of the box (inside) and the other on the back of the box (outside). The number of orders, specimens and families where required must be included on the exhibitor's box identification label.
3. Emphasis in judging will be placed on the overall variety of Kansas insects represented in the collection, accuracy of identification, skill and technique acquired in mounting of specimens and overall arrangement and appearance of the collection.
4. NOTE: Specimens of soft bodied insects such as aphids, lice, Collembola, termites, etc. should be exhibited in alcohol filled vials; however, the use of alcohol filled vials should be limited to only those specimens that lose their shape when pinned, since the vials pose a significant hazard to the rest of the collection if they become loose in transit.

Educational Classes

Educational Classes are limited to one standard box and a maximum of 150 specimens and work performed during the current year. Title of the exhibit should be indicated inside the box. The purpose of the project is to learn more about the importance, life cycles, biology, ecology, diversity, etc. of the insects and related Arthropods. Subject matter can be as varied as the animals themselves.

CLASS DESCRIPTION OF CLASS

1800	Any collection of insects gathered the first year. Insects are to be identified. (Not eligible for State Fair.)
1801	Beginning I Entomology Collection
1802	Beginning II Entomology Collection
1803	Intermediate Entomology Collection
1804	Advanced Entomology Collection
1805	Intermediate Educational Exhibit
1806	Introductory Entomology Notebook
1807	Beginning I Entomology Notebook
1808	Beginning II Entomology Notebook
1809	Intermediate Entomology Notebook
1810	Advanced Entomology Notebook
1811	Beginning Educational Exhibit
1812	Intermediate Educational Exhibit

*** Please refer to the Kansas State Fair Handbook for a complete list of rules.**

Division Y19 Fiber Arts

Superintendent:

Rules

1. Special consideration will be given to articles which are of original design.
2. Labels: Type or print on a 3"x2½ " piece of cloth/paper and sewn/safety-penned to a corner of a flat article and for garment, on the front left shoulder seam or the left side of the waistband. It should include the exhibitor's name, club, class, and age as of Jan 1 of the current year.
3. Exhibitors may enter up to 10 items.

CLASS DESCRIPTION OF CLASS

- | | |
|------|--|
| 1900 | Crochet: An article including felted items. |
| 1901 | Knitting: An article made either by hand or by knitting machine, including felted items. |
| 1902 | Needle Arts: An article created by hand using any of the following techniques: embroidery and cross-stitch; needlepoint; candle wicking; crewel; lacework; or applique. |
| 1903 | Patchwork or Quilted article: it is acceptable practices for the exhibitor to create the patchwork or quilted article and have someone else quilt it. |
| 1904 | Rug Making- A rug. Acceptable techniques- braiding, latch hook, tying, floor cloth, etc. Finished Product should be an item that would be used in a home. |
| 1905 | Spinning- A skein- minimum 10 yards in length. |
| 1906 | Weaving- A woven article. Members should attach information about the type of loom or process used. |
| 1907 | Ethnic Fiber Arts- An article. This is defined as a Fiber Art technique that is associated with a specific country or culture. It is a practical skill that was developed to provide basic family needs such as apparel, home furnishings or decorations. It is also defined as a method that has been maintained throughout history and passed on to others, often by observation and by example, such as batik, Swedish Huck towel weaving, mud cloth, bobbin weaving, tatting, felted items that are not knitted or crocheted, etc. Members should attach information on the history of the ethnic fiber art, where it was used, by whom, how it was used, short description of the technique, etc. |
| 1908 | Macramé- An article. |
| 1909 | Fiber Arts Educational Notebook- Share with others what you learned in this project about a particular Fiber Art. Exhibits should be in the form of a notebook or binder. The notebook should include a narrative section describing the fiber art. It should include a clear description of the project, technique, budget, supplies, goals, accomplishments, successes, failures, and future plans. It may include samples, techniques, how-to, photographs, of completed projects, or other ways of educating others about fiber arts. NOTE: A collection of brochures, web pages, patterns, record book forms, etc. does not constitute an educational notebook. Follow copyright laws as you are preparing your exhibit. Name, local unit and fiber art covered must be clearly marked in the notebook. |

Division Y20 Foods & Nutrition

Superintendent: Amber Reeves

Instructions for exhibiting:

1. All products should be presented to the judge in the manner most appropriate for the product. Example: Layer cakes and sponge cakes should be removed from the pan and set on a piece of flat covered cardboard. Coffeecakes designed to be served from the pan should be left in it. Use disposable containers whenever possible. When reusable containers are used for perishable food, purple ribbon winners should pick up their food and container at the completion of judging. Any food left overnight will be discarded and containers can be claimed at the Extension Office.
2. Photos will be taken of exhibitors with their food exhibit(s).
3. A food gift package and/or Specialty Food Product must contain at least 3 different food items, prepared by the exhibitor in a suitable container no larger than 18x18x18.
4. Prepared food items must have recipes attached with the entry. Additional homemade food items beyond the 3 minimum or purchased items may also be included in the gift basket. On a card (3x5 or 4x6), please answer these questions: What is the intended use, and what food safety precautions were taken during and after preparation?
5. No Alcoholic beverages will be accepted.
6. Entire product must be entered for items such as yeast breads, cakes, casseroles, pies, pizza, etc. Exhibits such as cupcakes, cookies, muffins, should include at least 4 samples on paper/plastic plate in a plastic bag.
7. May enter up to eight items. Exhibitors are encouraged to enter in the different classes.
8. Recipes in 4-H material are guidelines. Any recipe may be used.
9. Include recipe with all products. Put your name on the recipe and don't bring your only copy. We will keep them. (Prefer recipe on an 8 "x 11" sheet, printed out).
Email a Microsoft Word Document of all your recipes to ludwigk@ksu.edu by 5:00 pm the day of judging.
10. Perishable foods are not eligible for State Fair. Foods which do not meet basic rules of the fair will be judged and dropped 1 ribbon placing.
11. Educational classes: Exhibits may be in the form of a poster, notebook or display.
12. Follow copyright laws as explained in the General Rules as you are preparing your exhibit. Take care to select materials that will withstand Fair conditions.
13. No card table displays are allowed.
14. If the exhibit is a poster, it must not be larger than 22"x28". If the exhibit is a display, maximum size is a 2'x3' tri-fold display board.
15. Name and county or district must be clearly marked on educational exhibits.
16. The educational exhibit evaluation form will be provided at judging time. NOTE: A collection of your favorite recipes in a recipe box or notebook does not constitute an educational exhibit.
17. Only non-perishable food items earning a Purple Ribbon will be eligible for consideration to go to State Fair.

ALL FOOD LEVELS**CLASS DESCRIPTION OF CLASS**

2000 Food Flops: Doesn't require a pre-entry, and doesn't count towards your 8 items. If your exhibit didn't turn out right - Bring it! Entries will be judged on your comments about what happened and what you learned.

2001 Perishable (Does not qualify for state fair) *

2002 Nonperishable*

*Perishable means requires refrigeration (ribs, cheesecake, casseroles, etc)

*Non-perishable means shelf stable (ex. Brownies, breads, most cakes, and cookies etc)

*At foods judging the exhibitor will note on the entry card if their food is a main dish, side dish, dessert, or bread.

2003 Educational Exhibit

2004 Food Gift Package. No alcoholic beverages will be accepted. A food gift package must contain at least 3 different non-perishable food items (prepared for human consumption), made by the 4-H member, in a suitable container no larger than 18"x18"x18". Prepared food items must have recipes attached with the entry. Additional homemade food items beyond the 3 minimum or purchased items may also be included in the gift basket. On the back of the entry card, answer these questions: a) what is the intended use; b) what food safety precautions were taken during and after preparation. This entry will count as a food product, not as an educational exhibit. Home canned foods must follow Food Preservation rules. Canning jars should not be used for baking per manufacturer's instructions. They could break during baking. Any brand name products in the basket must have the labels covered. Do not cellophane wrap your basket. All items in the gift basket must be non-perishable, and if they have frosting or glaze, you must include the sugar percentage worksheet.

Division Y21 Food Preservation

Superintendent: Amber Reeves

1. All exhibits must be preserved in the current 4-H year.
2. Recipes and processing methods from the sources below are recommended required. Recipes must be from current, tested resources listed below AND **MUST BE ADJUSTED FOR ALTITUDE ELEVATION** based on your processing location, or it will be disqualified. Processing methods that will be disqualified include: open kettle-canning, oven canning, sun canning and using electric multi-cookers. If using the Presto Precise © Digital Pressure Canner, please indicate the appliance is used for either water bath or pressure canning. Untested recipes will be disqualified for food safety reasons. Tested recipe sources include:
 - a. K-State Research and Extension Food Preservation publications
 - b. Other University Extension Food Preservation publications
 - c. USDA Complete Guide to Home Canning, @2015
 - d. So Easy to Preserve, 6th edition, The University of Georgia Cooperative Extension Service
 - e. Ball® Blue Book Guide to Preserving, Edition 38
 - f. Ball® Complete Book of Home Preserving, @2024
 - g. Canning mixes (i.e. Mrs. Wage's, Ball®)
 - h. Pectin manufacturers (i.e. SureJell, Ball®)
 - i. KSRE Rapid Response Center Recipes

- j. National Center for Home Food Preservation
 - k. Ball™ and Kerr
3. Alcohol is not allowed as an ingredient in food preservation entries. Entries with alcohol will be disqualified and not be judged.
 4. There are no safe recommendations to can white peaches or elderberries.
 5. Each exhibit must have the complete recipe and instructions attached with the entry card, or it will be disqualified. Recipe must include exhibitor name, recipe source, date of publication, and elevation, where food was processed. If using Mrs. Wage's or Ball® mixes, indicate the date the mix was purchased.
 6. Exhibits must be heat processed in clean, clear standard canning jars, with new matching brand (ex: use Ball® lids on Ball® jars..) two-piece lids. This includes fermented foods. Do not use colored jars, fancy padded lids, fabric over wraps or cozies as they interfere with the judging process. Do not reuse jars from commercial food products (ex: spaghetti sauce jars). No fancy packs unless recipe states to do so (ex: Pickled asparagus). Jars must be sealed when entered. For food safety reasons, the size of jars used must not be larger than the jar size stated in the recipe (ex: Salsa is canned in pint jars only, no quarts). Note: There are 12-ounce, 24-ounce and 28-ounce canning jars available and may be used. Use pint jar process recommendations for 12-ounce jars. Use quart jar process recommendations for 24 ounce and 28-ounce jars.
 7. Each jar exhibited must be labeled. The label must not cover brand name of jar. The label must give: Class Number, Product, Elevation where processed, Canning Method (water bath, weighted gauge or dial gauge pressure method), Process Time, Pressure (psi), Date processed including month and year, Name, and County/District.
 8. If dried food product is not in a canning jar, it will be lowered one ribbon rating. Suggested amount: 1/3 – ½ cup, or three or four pieces per exhibit. Dried products must include the recipe, preparation steps, and heating instructions. No freeze-dried foods.
 9. All meat jerky must be heated to an internal temperature of 160 degrees F before or after drying. This is not the drying temperature! Jerky not heated to an internal temperature of 160 degrees F will be disqualified and not be judged. Heating information can be found in "Dry Meat Safely at Home."
 10. Containers may be opened at the discretion of the judge.

THE LABEL MUST HAVE:

Class No.: _____ Product: _____
 Name: _____
 County/District: _____
 Altitude where processed: _____ Process Time: _____
 Canning Method: Water Bath OR Pressure
 Dial Gauge (psi): _____ Weighted Gauge (psi) _____
 Date processed (month/year) _____

NOTE: CLASSES 2410-2416 WILL REQUIRE TWO JARS**CLASS DESCRIPTION OF CLASS**

2100	Tomato/Tomato Products, tomato juice, and tomato salsa (salsa in pints only)
2101	Sweet Spreads (Fruit and/or vegetables), syrups
2102	Fruits, Juices, fruit mixtures
2103	Low Acid Vegetables (green beans, corn, vegetable mixtures etc.)
2104	Pickles (fruit or vegetable), Fermented Foods, Relishes and Chutney
2105	Canned Meats
2106	Dried Foods: small jar (No freeze-dried foods)

Division Y22 Forestry Superintendent:

All leaf exhibits are to be mounted on 8-1/2" x 11" heavy stock paper and placed in loose leaf binders. (Magnetic or adhesive filler sheets for photographic prints are recommended.) Twigs and fruit collections may be exhibited in whatever manner you choose (maximum exhibit size 2" x 3"). Leaves should be identified with an appropriate label located near the leaf on the same page. These labels should include:

1. The proper common name as listed in the 4-H Bulletin 334, "List of Native Kansas Forest Trees"
2. Location (city, and/or county) where collected: and
3. Date (day, month, year collected)

For ideas on mounting, see the Forestry Project booklet (4-H 279).

Divide Specimens into the following two sections: Native Kansas Trees, and Non-Native Trees.

New Specimens collected during current year cannot be a duplicate species of a previous specimen. When replacing a "previously displayed" sample, the label must be updated and the specimen displayed in the "old previous" section.

Have samples grouped according to the year (such as "old-previous" and "new"). Variations of varieties do not count as different species or specimens.

CLASS DESCRIPTION OF CLASS

- | | |
|------|---|
| 2200 | Beginning: Exhibit leaves of a minimum of 10 different (at least 5 specimens are "new") native Kansas trees, or leaf, twig, and fruit of five different native trees. Can include non-native specimens in addition to the required native Kansas tree specimens. |
| 2201 | Intermediate: Leaf specimens only. Exhibit leaves of a minimum of 20 (includes at least 10 "new" in addition to those previously exhibited) different native Kansas trees, or leaf, twig, and fruit of 10 different trees (include at least 5 "new" in addition to those previously exhibited). Can exhibit nonnative in addition to the required native Kansas trees. |
| 2202 | Senior: Exhibit leaves a minimum of 25 (includes at least 5 new leaves, 5 new twigs, and 5 new fruit of the same species in addition to those previously exhibited) different native Kansas trees (not shrubs) or leaf, twig and fruit of 10 different trees (includes at least 5 new in addition to those previously exhibited.) Can exhibit non-native in addition to the required native Kansas trees. |
| 2203 | Advanced: Exhibit leaves of a minimum of 40 (includes at least 20 new specimens) different native Kansas trees, or leaf, twig, and fruit of 20 different trees (includes 10 new plus those from previous exhibits). Can exhibit non-native in addition to the required native Kansas trees. |

** Exhibit one complete leaf where possible. Where leaf is too large, exhibit as much of terminal portions as possible. Sketch in reduced scale the entire leaf and illustrate where the exhibited portion comes from.

HOW A TREE GROWS

- | | |
|------|------------------------------|
| 2204 | How a Tree Grows |
| 2205 | Tree Appreciation |
| 2206 | Growing and Protecting Trees |
| 2207 | Tree Culture |
| 2208 | How Forests Serve Us |
| 2209 | Educational/Creative Exhibit |

* Please refer to the Kansas State Fair Handbook for a complete list of rules.

Division Y23 Geology & Lapidary

Superintendent: Lucas Epler

Rules

1. Geology exhibits will be judged conference style. The standard size exhibit box should be 18" x 24" x 3 ½". All specimens are to be arranged across the narrow (18") dimension of the exhibit box, making the exhibit 18" across the top and 24" deep. If a box has a sliding Plexiglass cover, it must be removable from the top. Screws, locks, or other devices that would prevent judges from removing the Plexiglass cover should not be used.
2. Each exhibitor is required to identify each display box by placing an identification label bearing name, county, and number of specimens in the upper left-hand corner of the glass cover (inside - use clear double-sided tape to adhere gummed labels) and by attaching a label with the same information on the lower right corner of the box (outside).
3. Exhibitor may enter in both geology and lapidary classes.
4. Exhibitor may show in only one of the novice geology classes (2300-2304).
5. Exhibitor may also show in geology class 2309 (special exhibit) and in one or more of the lapidary classes.
6. Geology specimens should be labeled with the number of the specimens, date collected, specimen name or description, and locality (county) where collected.
7. For the geology classes 2305-2308, specimens should be mounted in the box by proper groups: rocks, minerals, fossils. Fossils must be identified to the Phylum, Class, and Genus level (if possible, or part if Genus cannot be determined). The Genus specimen name is to begin with a capital letter, and the whole specimen's name must either be italicized or underlined, not both. Species name is not required; however, if a species name is used, it must be all lowercase and either italicized or underlined, not both. The words "Phylum, Class, Genus" on labels are to be spelled out, not abbreviated. More than one specimen of the same kind of rock or mineral or species of a fossil may be exhibited if this duplication represents different geological formations. Specimen label must show this distinction (Fort Hays limestone, not just limestone; calcite from the Greenhorn Formation, not just calcite; Phylum: Brachiopoda Class: Articulata Genus: Composita from the Morrill Limestone Member, not just Phylum: Brachiopoda Class: Articulata Genus: Composita).
8. For the Geology classes 2305-2308, specimens should be mounted in the box by proper groups: rocks, minerals, fossils. All specimens must be collected from locations in Kansas. Out-of-state specimens will not count in the minimum
9. Novice Classes - not eligible for State Fair, need to add 6 new Specimens each year after the first year.

CLASS DESCRIPTION OF CLASS

2300	Novice Class (First year exhibit - nine specimens) three rocks, three minerals and three fossils.
2301	Novice Class (second year exhibit - minimum 12 specimens) add six new specimens.
2302	Novice Class (Third year exhibit - minimum 18 specimens) add six new specimens.
2303	Novice Class (Fourth year exhibit - minimum 24 specimens) add six new specimens.
2304	Novice Class - Educational Display relating to project work. number for the class, nor will they be considered in the judging.
2305	Display at least 15 rocks, minerals or fossils collected during the current 4-H year. This is for first-year geology project members or those ages 7-9.

CLASS DESCRIPTION OF CLASS

- 2306 Display at least 30 different rocks, minerals or fossils, at least 5 of each. Fifteen must be collected during the current 4-H year. can only enter this class for two years.
- 2307 Display at least 45 rocks, minerals or fossils, at least 5 of each. Fifteen must be collected during the current year. More than one specimen of the same kind of rock or mineral or species of a fossil may be exhibited if this duplication represents different geological formations. Specimen label must show this distinction (Fort Hays limestone, not just limestone; exact species must have different formation names listed on the I.D. card; Composite Brachiopod from Morrill Limestone, not just Brachiopod or Composite Brachiopod.
- 2308 Display at least 60 rocks, minerals or fossils, at least 5 of each. Fifteen must be collected during the current 4-H year. More than one specimen of the same kind of rock or mineral of species of a fossil may be exhibited if this duplication represents different geological formations. Specimen label must show this distinction. Exhibit limited to two boxes 18" x 24" x 3-1/2" with Plexiglass cover. Exhibit must include approximately 15 specimens of current year's work. This class is open to those ages 14 and older.
- 2309 Exhibit relating to everyday living; or to a mineral test, a rock formation, geological history, species of a fossil, forms of one mineral, a variation of one kind of rock, archaeological artifacts, or Indian artifacts. Exhibit limited to 4 feet of table space. Care should be taken to use durable materials that will withstand fair conditions. Exhibitor may show in the class regardless of number of times they have exhibited - may also exhibit in lapidary class.

LAPIDARY CLASSES

The lapidary will be judged on the following criteria:

Workmanship and Content	60 points
Presentation and Showmanship	30 points
Accuracy of Information	10 points

The dimensions of the box should be appropriate for the display but outside dimensions should not exceed 18" x 24" x 3½". The work (polishing/tumbling) must be done by the exhibitor as this is part of the learning process.

All lapidary specimens should be labeled with the following information:

- Specimen name
 - Place of origin (country, state, or county; county required for Kansas specimens)
 - Purchased or self-collected
 - Date lapidary treatment began
 - Date lapidary treatment completed (Treatment completed after the State Fair is considered a new year specimen).
- 2310 Lapidary. Display at least 5 varieties of polished (tumbled) specimens and 5 varieties of unpolished specimens that have not yet received lapidary treatment. These do not have to be an example of "before and after", nor do they have to be self-collected. Locales must be identified.
- 2311 Lapidary. Display before-and-after examples of at least 3 varieties of specimens, at least 2 tumble-polished and 2 unpolished of each. There is no requirement that the 4-H member collect any of these. Locales must be identified. Lapidary work should be done during the current 4-H year.

CLASS DESCRIPTION OF CLASS

- 2312 Lapidary. Display before-and-after examples of at least 6 varieties of specimens, at least 2 tumble-polished and 2 unpolished of each. At least two varieties should be collected from the native site by the 4-H member, at least one of which comes from Kansas. Locales must be identified. Lapidary work on at least three varieties should be done during the current 4-H year.
- 2313 Lapidary. Display before-and-after examples of at least 9 varieties of specimens, at least 2 tumble-polished and 2 unpolished of each. At least three varieties should be collected from the native site by the 4-H member, at least two of which comes from Kansas. Locales must be identified. Lapidary work on at least three varieties should be done during the current 4-H year.
- 2314 Lapidary. Exhibit at least 6 specimens that have not previously been exhibited, which have received lapidary treatment. Lapidary treatment may consist of polishing, and end, face, or flat lapping. Specimens must represent at least 3 different varieties and include at least three cabochons of any size or shape, only one of which may be free-formed. A cabochon is a style of cutting in which the top of the stone forms a domed or curved convex surface. **Three of the specimens must be mounted into jewelry findings.**

Division Y24 Horticulture & Landscape Design

Superintendent: David Holmes

Rules

1. Exhibits will be judged on the selection of plant specimens, arrangement of plants, and quality of plant material. Exhibitors are limited to a maximum of 10 entries total in floriculture and one entry per variety in garden.
2. All materials should be grown and collected rather than purchased (except class 4205). Must be cared for by the exhibitor for a minimum of two months.

Garden

CLASS DESCRIPTION OF CLASS

- 2400 Garden Display- each exhibitor in this class will be limited to four square feet of space. The garden display should be exhibited in a tray, basket or container that can be easily moved by the fair staff. Exhibit consists of five different types of fresh vegetables or fruits. Canned products and shelled vegetables are not acceptable. Only one variety of each type of vegetable or fruit may be exhibited. The number of the types of vegetables or fruits to be exhibited is as follows:
- 2401 large vegetables (one each): Cabbage, Eggplant, Large Pumpkin, Summer/Winter Squash, Watermelon, Cantaloupe, other large vegetable
- 2402 medium vegetables (five each): Beets, Carrots, Cucumbers, Decorative Gourds, Sweet Corn, Miniature Pumpkins, Okra, Red or White Onions, Bell or other type of pepper, Sweet, Red, White, or Russet Potatoes, Tomatoes, also Cherry Tomatoes, parsnips, Turnips, or other similar-sized vegetables.
- 2403 small vegetables (twelve each): Green Snap Beans, Wax Beans, English Peas, Radishes, or similar-sized vegetables
- 2404 small fruits (one-half pint box): Strawberries, Blackberries, Raspberries, or other similar-sized fruits
- 2405 tree fruits (five each): Apples, Pears, Peaches, or similar-sized fruits.
- 2406 grapes (2 bunches)
- 2407 Fresh Culinary Herbs, six stems (example – parsley, basil, dill, etc.) Exhibits in a disposable container of water. Dried herbs are not accepted.

CLASS DESCRIPTION OF CLASS

- 2408 Horticulture Notebook entry shall consist of a notebook or three-ring binder of written narrative describing a horticulture project, such as a landscape design, landscape installation, lawn renovation, water garden, flower garden, vegetable garden, lawn mowing service, landscape maintenance business, farmer's market business, or other horticulture project. 4-H'ers are encouraged to include photographs, illustrations, and/or landscape drawings that help explain work done by the member. Photos taken from the same location before, during and after the completion of the project are particularly helpful.

Floriculture**CLASS DESCRIPTION OF CLASS**

- 2409 Annuals – cut specimen, single. Displayed in an appropriate container (container will not be judged)
- 2410 Perennials - As above
- 2411 Flower Arrangement – fresh, grown or collected by exhibitor
- 2412 Dried Flower Arrangement – dried, grown or collected by exhibitor
- 2413 Potted Plant (not a state fair class)
- 2414 Floral Arrangement - fresh purchased (to be judged as a separate class) (not a state fair class)

Division Y25 Interior Design & Architecture

Superintendent:

- 2300 Interior Room Design Board
- 2501 Two Collages on Presentation Board
- 2502 Two Diorama Models
- 2503 Marble Maze or Enclosure
- 2504 Marble Maze Presentation Board only

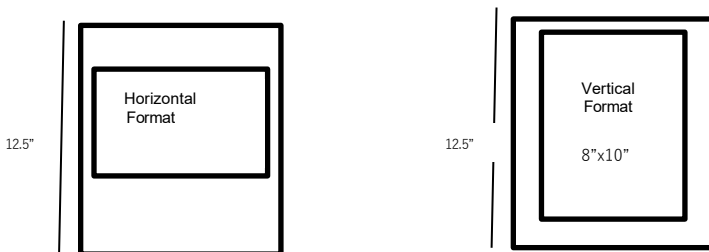
* Please refer to the Kansas State Fair Handbook for a complete list of rules.

Division Y26 Photography

Superintendent: Bobbi Ann Shanks

RULES

- Judges will choose one grand and one reserve for each photo class. Then one grand will be chosen overall.
- Black and white and color photographs may be exhibited.
- Each Exhibitor will be limited to two entries per class number.
- All photos must be no larger than 8" x 10" and no smaller than 7" x 9". Photos are to be mounted across the narrow 11" dimension of an 11" x 12.5" studio mount, which can be purchased at the Extension Office. The top edge of the print must be 1" below the top of the mount. The sides of the print must be equal distance from the two sides of the mount.



5. No white date slip is to be used, nor mounted.
6. No lettering will be permitted on the mount or on the picture. No underlays or borders are to be used.
7. Photographs exhibited must be the result of the current year's project work.
8. A full coverage permanent mount using a **spray adhesive** must be used. Do not use household glues, glue sticks, double stick tape/patches, etc. to adhere photo to matte board. Photos not mounted correctly will be lowered one ribbon placing after judging.
9. Place photo exhibit (except for special division entries) in an unsealed protective plastic bag. Matte boards and plastic bags can be purchased at the extension office.
10. Photographs taken with a digital camera are allowed no more adjustments than exposure, color intensity or correction, one click filter effects, red eye removal, cropping, dodging and burning, and HDR (high dynamic range). Please note: AI (artificial intelligence)- modified images are not allowed. Ribbon placement will be determined by combining the scores of each judging section.
11. The black and white class is for black and white prints only. Monochromatic prints, including sepia prints, are considered color photos and must be entered in the appropriate color photo class.
12. If mounted incorrectly you will be dropped 1 ribbon placing.
13. Photos with line subject matter on railroad right of way or taken from railroad right of way property will not be accepted for entry into the fair and will be sent home.

PHOTO CLASSES

CLASS DESCRIPTION OF CLASS

2600	Color photos taken by 4-H member with 3 years or less in the project.
2601	Color photos taken by 4-H member with 4-7 years in the project.
2602	Color photo taken by a 4-H member with 8 years or more in the project.
2603	Black and white photos taken by 4-H member with 3 years or less in project
2604	Black and white photos taken by 4-H member with 4-7 years in the project.
2605	Black and white photos taken by 4-H member with 8 or more years in the project.

PORTFOLIO CLASSES

CLASS DESCRIPTION OF CLASS

2606	Growth Portfolio*
2607	Career Portfolio *

***Refer to the Kansas State Fair Handbook for rules for classes 2606 and 2607**

SPECIAL CLASSES - Not eligible for State Fair

These classes are for color or black and white. Photos should be 4inx6in. Captions may be added. Mount on poster board, 14" x 22".

CLASS DESCRIPTION OF CLASS

2608	Picture Display - An entry will consist of five pictures having at least one picture from each of these 5 areas: 1 - Landscape 2 - People 3 -Animals or Birds 4 - Buildings 5 - Plant/Flower or other
2609	Picture Story Series - An entry will consist of a series of five to seven pictures that tell a story.

Division Y27 Robotics

Superintendent:

ROBOTICS

- 2700 Robot made from a commercial (purchased) kit (no programming, just assembly)
- 2701 Robot designed by exhibitor. May not be mere modifications of an existing robot kit or plan.
- 2702 Programmable robot made from a Commercial (purchased) kit.
- 2703 Robot designed and constructed by exhibitor or from a commercial kit, that is operated by a remote-controlled device.
- 2704 Junk Drawer Robotics.
- 2705 Robot designed by 2 or more 4-H aerospace program members. May not be mere modifications of an existing robot kit or plan.
- 2706 Educational display, notebook, or poster.

***Refer to the Kansas State Fair Handbook for rules**

Division Y28 Sewing & Textiles

Superintendent: Pam Paxson

Rules

1. All clothing entries will be judged on a conference system, with the exhibitor meeting with the judge at the time the exhibit is evaluated.
2. Garments being considered for awards will be held until all other garments have been judged. All clothing exhibits will be judged at this time, including sewing boxes and non-wearing apparel, stuffed items, etc.
3. Exhibitors may enter any number of items per class except sewing boxes. Pre-cut kits are acceptable for all clothing classes. Exhibits must be entered in the fair to receive ribbons and premium money. Exhibitors will be told their placing at the time they visit with the judge.
4. Garments may have been worn but should be carefully laundered or cleaned before being exhibited.
5. Labels: Type or print on a 3"x2½ "piece of cloth/paper and sewn/safety-penned to the back of neck, center back of waistband, or left end of apron band. It should include the exhibitor's name, club, class, and age as of Jan 1 of the current year.
6. Garments brought to the fair should be on a hanger (prefer swivel hanger) with the hook toward the right shoulder of the garment. Attach skirts to the hanger with large safety pins. If a purchased item is needed to complete the exhibit, place it in a clear plastic bag and attach it to the hanger with safety pins.
7. Class 2500 is open only to exhibitors enrolled in their first or second year of sewing, and this class does not qualify for the state fair.
8. Classes 2505 to 2526 are open to all exhibitors enrolled in clothing regardless of which phase they are enrolled in, but will be divided into age groups for competitive judging. Please indicate your age division on pre-entry forms and garment labels.
9. Exhibits will be judged on their own merit against an acceptable standard, with due consideration given to the child's age and experience in sewing.
10. Exhibits will be compared to other exhibits only for special awards.
11. At state fair, entries that indicate it contains recycled materials will be recognized.

CLASS DESCRIPTION OF CLASS

- 2800 Sewing Box
- 2801 An article, garment, or outfit

CLASS DESCRIPTION OF CLASS

- 2802 Recycled Clothing Project: An item made of at least 50% recycled material (recycled means reusing an existing item in a new way), could be remaking/redesigning a garment, re-purposing a clothing item for new use, etc. Must include sewing of some kind. A 3"x5" index card MUST accompany the entry describing the recycled materials and how they were used in the item.
- 2803 Educational Exhibit Classes: Share with others what you learned in this project. Exhibits may be in the form of a poster, notebook, or display. Follow copyright laws as explained in the General Rules as you are preparing your exhibit. Take care to select durable materials that will withstand Fair conditions. No card table displays are allowed. If the exhibit is a poster, it must not be larger than 22"x28". If the exhibit is a display, the maximum size is a 3'x4' tri-fold display board. Name and county must be clearly marked in educational exhibits.

Division Y29 Shooting Sports

Superintendent: Samantha Hall

Rules

1. A member may make only one entry in this division.
2. Education Display: Must be the standard tri-fold board ONLY, must not exceed standard tri-fold 3' wide x 4' tall. Promotional Posters: Must be flat and no larger than 22"x28".
3. Exhibitors must comply with state and federal laws and fair management policies. No "live" ammunition containing propellant, or explosive powers, may be used in any display! Artistic substitutes must be used in lieu of powder and "live" ammunition.
4. Name, age and year in project should be in a prominent location on the exhibit.

CLASS DESCRIPTION OF CLASS

- 2900 Educational display. Must be directly related to the Shooting Sports project.
- 2901 Promotional Poster. Must promote 4-H Shooting Sports.
- 2902 Notebook. Contents pertain to some phase, results, story or information about 4-H Shooting Sports.
- 2903 Shooting Aid or Accessory
- 2904 Storage Case
- 2905 Practice Game or Activity

***Please refer to the Kansas State Fair Handbook for a complete list of rules.**

**Division Y30 Shopping in Style
(Fashion Revue)**

Superintendent: Ashley Neely

Rules

1. Fashion Revue is open to any member enrolled in the Sewing & Textiles Design or Shopping in Style project.
2. Judging will be held on **Saturday, June 27th**. There will be a public Fashion Revue and awards in the show arena on Wednesday of the Fair week, at 5:30 pm. To receive ribbons and premium money for Fashion Revue, exhibitors must model in the Public Fashion Revue.
3. Judging will begin at 9:00 am with Clothing Construction. At 10:00 am, we will begin judging the Shopping in Style.
4. There will be a junior division (ages 7-13) and a senior division (ages 14-18 as of Jan 1.) for Clothing Construction & Boys Shopping in Style.

5. Girls Shopping in Style will have junior division (ages 7-9), intermediate division (ages 10-13), and a senior division (ages 14-18).
6. A grand and reserve champion will be selected in each age division, to be announced at the Public Fashion Revue.
7. Clothing Construction garments modeled must have been made in the project year by the exhibitor enrolled. Each exhibitor may model multiple items in classes 2600 and 2601. If an exhibitor has constructed a 2-piece outfit, they cannot model items separately as a top and shorts, etc.; it must be entered together.
8. In Shopping in Style, garments and accessories must be selected by the exhibitor as part of their project. Each exhibitor may model only one garment per class.
9. Garments may have been worn before but should be carefully laundered or cleaned before being exhibited.

CLASS DESCRIPTION OF CLASS

- 3000 Any wearable item, whether sewn, knitted, crocheted, or embroidered.
 3001 Made over Garment/Upcycled Clothing/Garment (does not qualify for state fair)

BUYMANSHIP (GIRLS)

CLASS DESCRIPTION OF CLASS

- 3002 Formal- clothing worn to special events
 3003 School Clothes- clothes nice for school
 3004 Active Wear- sports wear
 3005 Western Wear- Jeans, boots, western style shirts.
 3006 Personal Choice- Outfit of your choosing

BUYMANSHIP (BOYS)

CLASS DESCRIPTION OF CLASS

- 3007 Formal
 3008 School Clothes
 3009 Active Wear
 3010 Western Wear
 3011 Personal Choice- Outfit of your choosing
 3012 Educational Displays

***Please refer to the Kansas State Fair Handbook for a complete list of rules.**

Division Y31 Small Engines

Superintendent: Randy Holding

Through Small Engines, you will have the opportunity to educate others about what you have learned in the project or to promote the benefits of participation in the small engines project. All exhibits should involve engines smaller than 25 horsepower. Engine should have no fuel in tank or carburetor.

1. Each Small Engines exhibit must include a "4-H Small Engines Information" packet with a form. The form is available from your local K-State Extension office or at <https://engines.engtech4ks.com>. The form should be attached to a 10" X 13" manila envelope. Place exhibit paperwork and/or any pictures inside the manila envelope. For notebooks, display boards, and posters, no additional exhibit information is required; no manila envelope is needed for these exhibits
2. Items that have been in use should be cleaned for exhibit.

3. A sheet of operating instructions must be included in the packet for any exhibit that is not self-explanatory.
4. As exhibitors prepare their exhibits, appropriate PPE (Personal Protection Equipment) is required.
5. Cutting surfaces, such as blades, are to have a protective covering over them to prevent injury. The covering should be easily removed and reinstalled for judging. Foam "pool noodles" and multiple layers of cardboard are acceptable.
6. If a safety violation is noted by the judges, superintendent, or other staff, the exhibitor's exhibit, at the judges' discretion, may receive reduced ribbon placement or disqualification.
7. All exhibits in this division must be self-standing.

CLASS DESCRIPTION OF CLASS

- 3100 Display: Exhibit a display, selecting one of the following options: 1) a display identifying different engine or lawn and garden equipment parts or a display showing the function of the various engine or lawn and garden equipment parts; OR 2) a display identifying and explaining the function(s) of different special tools needed for small engine repair or maintenance; OR 3) a display illustrating and providing the results of any one of experiments that are included in the project books. No complete engines, lawn tractors, tillers, chainsaws are permitted for display in this class. Maximum tri-fold or display board size is 3' x 4', items may not extend beyond the 24" from the back of the display board.
- 3101 Maintenance: Exhibit a display that illustrates either: 1) Routine maintenance procedures OR 2) Diagnosing and troubleshooting specific problems in an engine. No complete engines, lawn tractors, tillers, chainsaws, etc. are permitted for display in this class. A maximum tri-fold or display board size of 3' x 4', items may not extend beyond 24" from the back of the display board.
- 3102 Operation: Exhibit an operable small engine (no more than 20 HP) overhauled or rebuilt by the member. Include maintenance schedule for the engine and a brief description of steps taken by the member overhauling or rebuilding the engine. The engine should not contain fuel in the tank or carburetor.

Division Y32 Uncrewed Aircraft Systems

Superintendent:

- 3200 Uncrewed Aircraft System designed and constructed by the exhibitor that is operated by a remote-controlled device
- 3201 Practical applications of an Uncrewed Aircraft System constructed from a commercial (purchased) kit
- 3202 Educational Poster, Display Board, or Notebook

***Please refer to the Kansas State Fair Handbook for a complete list of rules.**

Division Y33 Veterinary Sciences

Superintendent: Bobbi Ann Shanks

The purpose of the 4-H Veterinary Science project is to provide a way for young people who care for animals and may want to follow a career in veterinary medicine to explore the topic. In this project, members will learn about animal health, behavior, and visit with veterinarians. 4-H member in the Veterinary Science project may develop an exhibit to demonstrate the knowledge and skills learned about a common health problem in animals, a veterinary science principle or public health/zoonotic diseases.

CLASS DESCRIPTION OF CLASS

3300 Veterinary Science Notebook, Poster, Project Display, or Diorama

***Please refer to the Kansas State Fair Handbook for a complete list of rules.**

Division Y34 Visual Arts

Superintendent: Debra Hilderbrand

Rules

1. Exhibitors may enter up to 6 items.
2. All exhibits that need to be hung (including all fine arts) will need to have a wire hanger.

CLASS DESCRIPTION OF CLASS

- 3400 Fine Arts: Oil, chalk, charcoal, dyes, pastels, pencil, ink, acrylic, or watercolor on canvas, canvas board, paper, wood, metal, or textiles, framed as a picture, prepared for hanging. Stretched canvas art on a wooden frame is considered prepared for hanging provided that frame has a hanger.
- 3401 Clay and Ceramics: Any original item made of clay; may be fired or unfired, hand formed, or thrown on a wheel. Self-hardening, fire/oven-cured, and/or cornstarch clays are acceptable.
- 3402 Leather and Jewelry: Any leather stamping, carving, tooling, lacing, or stitching piece or any jewelry piece made from any medium are acceptable exhibits.
- 3403 Three Dimensional: The piece must be observable on at least three sides and should be either free-standing or prepared to be hung. Craft and pre-formed or assembled projects are not acceptable.
- 3404 General Crafts: This category incorporates miscellaneous pieces that do not correspond to the four above-mentioned categories.

Division Y35 Wildlife

Superintendent:

Types of exhibits in this division are open to educational or creative displays, educational posters, or notebooks. Maximum exhibit size is 2' x 3'. Avoid using copyrighted materials whenever possible. 4-H members must comply with state and federal laws. It is illegal to possess threatened or endangered wildlife, or the feathers, nests or eggs of non-game birds. Game birds and game animals taken legally during an open season may be used. The use of live wild animals in educational exhibits is prohibited.

Name, county, age and year in project should be in a prominent location on the exhibit. Credit all citations, websites or other resources used in creating your exhibit.

CLASS DESCRIPTION OF CLASS

- 3500 Notebook - Contents pertain to some phase, results, story, or information about the wildlife project.
- 3501 Educational Poster - Must be related to something learned in the wildlife project. (Poster board or foam board no larger than 22" x 28")
- 3502 Educational Display - Must be directly related to the wildlife project (Maximum size is a 2 x 3' tri-fold display board.)
- 3503 Fish Harvesting Equipment
- 3504 Build a Fishing Rod
- 3505 Casting Target
- 3506 Wildlife Harvesting Equipment
- 3507 Inventing Wildlife/Fish Harvesting Equipment, Aid or Accessory

3508	Tanned Hides
3509	Taxidermy
3510	Wildlife Tracks
3511	Wildlife Knowledge Check
3512	Houses
3513	Feeders/Waterers

* Please refer to the Kansas State Fair Handbook for a complete list of rules.

Division Y36 Woodworking

Superintendent: Albert Welch

1. The plan from which the project was constructed must be included with the article exhibited. The plan may be a photocopy, the actual pattern, or a scale drawing. It must be complete and accurate to the extent that a duplicate article could be built using the plan as a guide. Please note: a set of step-by-step instructions is not a plan.
2. Projects with missing or insufficient plans will be lowered by one ribbon placing (i.e. a blue ribbon exhibit will receive a red ribbon).
3. The use of materials other than wood, screws, nails, and adhesive should be kept to a minimum.
4. Projects that have unsecured glass, i.e., glass shelves, the glass top of a coffee table, etc., should not be brought to the fair. Glass that is secured in the project, i.e., the glass front of a gun case or cabinet, etc., is permissible since it cannot be easily removed.
5. In judging woodwork articles, consideration will be given to: Workmanship, including accuracy to the plan; design; choice of wood; suitability, quality of finish, and usefulness.
6. Projects with "fractal burning" are NOT ALLOWED.

CLASS DESCRIPTION OF CLASS

3600 Any woodworking item

Leadership, Self-determined, & Reading Adventures are County Fair only classes.

Please notify the office by the first Monday of July if you will need a large area.

Division Y37 Leadership

Superintendent: Amanda Walker

CLASS DESCRIPTION OF CLASS

3700 Any article, scrapbook, or poster that portrays the project you've studied and shows what you have learned.

Division Y38 Self-Determined

Superintendent:

The self-determined project is just that - you decide what you do or study. Is there something you are passionate about that is not included in the 4-H project listing? Then, this is your opportunity to create your own project. Research a sport, hobby, career, or pets - the sky is the limit

CLASS	DESCRIPTION OF CLASS
3800	Any article, scrapbook, or poster

Division Y39 Reading Adventures

Superintendent:

CLASS	DESCRIPTION OF CLASS
3900	Poster- 22" x 28" maximum on any theme you learned about. Ex: Author, Dewey Decimal System, Mysteries, Fiction, etc.
3901	Scrapbook- Containing a list of the titles and authors of books read, plus a brief report on two of your favorites



Becky McDaniel

Broker ~ Owner

Licensed in Kansas

Cell: 417-396-9513

Office: 620-429-4400

120 N. Kansas Avenue

Columbus, KS 66725

homesbyrealpro.com

Email: RealProColumbus@gmail.com

NOTES:



So You Missed The Wagon?

Call today to get your ad in next years

Annual Cherokee County Fair Book!

Call David at 620-674-2183

2026 Cherokee County Fair Family Sponsors

Families of Zack Robinson & Jamie Robinson
Sharp Family
Dewey & LaDonna Smith
David & Laura Holmes Family
Steve & Dora Dunlap Family
Chip, Ronda, Kenny, Macy & Peyton Herrenbruck
Gary & Amy Gideon
Bennie & Nacole Capron Family
Brad Wells
Colleen Johnson
4 Walk Farms
Glittering Stones 4H Club
Ashley Neely Family
H6 Farms
Nancy Herrenbruck
The Cain Family
Albert, Josie & Kora Welch
Lucian Family
JB Robison SR & JB Robison JR Families
Rand Sapp Family
Breaking Dawn Hot Air Balloon Team
Forsythe Companies
Kathy & Haleigh Denny
Bryon & Traci Spear Family
Steve & Diane Allen
Bob & Mary Epler Family
Steve & Janie Jarrett Family
Rodney & Susan Oels
Spring Valley Sparklers 4H Club
The McCues Roost LLC
Steven & Ashley Place
Randy & Linda Holding and Titus & Lexi Woods

LIFE
IS MOOO-CH
BETTER
WITH
COWS!

Way
Warstler
attle
Riverton, KS

417-438-0784

417-438-0984

Warstler

Excavating



*Water Lines & Mains • Septic Systems • Base Rock
Installation & Repairs • Dump Truck Hauling • Dozing
Roads & Driveways • Storm Shelters
Directional Drilling*

No Job Too BIG or small
(417) 438-0784

WarstlerExcavating@gmail.com

***Proud to support the exhibitors of the
American Legion Fair***



EXCHANGE
State Bank

- SAVINGS ACCOUNTS • SAFE DEPOSIT BOXES
- LOANS - AGRICULTURAL - PERSONAL - COMMERCIAL
- CHECKING ACCOUNTS • CERTIFICATES OF DEPOSIT • NEW ACCOUNTS

*Banking
with
Friends*

Each depositor insured to \$250,000



FEDERAL DEPOSIT INSURANCE CORPORATION



24 Hr. ATM **www.esbks.com**

Business Hours

- Mon.-Thur. 8:30 am to 4:00 pm
- Fri. 8:30 a.m to 6:00 pm
- Sat. Drive Thru
8:00 am to 11:00 am

Peter J. Hutley

Branch Manager

209 NE Avenue, Columbus, Kansas

620-429-1873

Team Outfitters

We deliver on time - everytime

-
- Letter Jackets - Patches
 - Custom Embroidery
 - Trophies - Medals
-

417 SE 69 Hwy Alt.
PO Box 166
Crestline, KS 66728

Call Today
620-389-2308

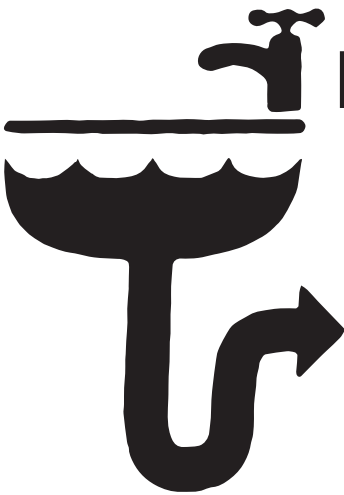
Days

Towing & Recovery

Local and Long Distance Towing

We Buy Junk Cars!

906 E. Country Road
Columbus, Kansas
417-456-0665



**Hank
HILDEBRANDT**

**PLUMBING, DRAIN CLEANING
EXCAVATION**

**PO Box 275
Weir, KS 66781
(620) 429-2257**

Like us on Facebook!

**JAY
HATFIELD**




Cadillac



GMC



**JAY
HATFIELD
M****BILITY**

**JAY
HATFIELD
MOTORSPORTS**



Kawasaki



HONDA



SUZUKI



POLARIS®

can-am



**Proud Supporters of the
Cherokee County
American Legion Fair**

*Visit all of our stores online
at www.jayhatfield.net*

**200 S. East Avenue | Columbus, Kansas
(620) 429-2636 | 800-545-4227**

NOTES:



So You Missed The Wagon?

Call today to get your ad in next years

Annual Cherokee County Fair Book!

Call David at 620-674-2183

Wishing good luck to all the fair participants!



EQUITY BANK

*“We never forget
it’s your money.”*

102 N. Broadway
Pittsburg, KS 66762
620-231-3700

www.equitybank.com

Member
FDIC



The advertisement has a red background with a white zigzag line on the left side. It features three circular images: a combine harvester in a field, a farm with silos, and a field of hay bales. The text 'WD AG' is in large red letters with a white outline, and 'INSURANCE SERVICES' is in smaller black letters below it. A stylized house icon with an American flag pattern is positioned above the 'WD AG' text. A black box at the bottom left contains the text 'OFFICES IN PARSONS & PITTSBURG, KS'. At the bottom, the phone number '620-421-6900', website 'www.wic.insurance', and 'A division of Wood Insurance Center' are listed. Two asterisks are placed to the right of the text: '*Traditional Farms & Ranches' and '*Commercial Insurance'.

WD AG

INSURANCE SERVICES


**LET US GO
TO WORK
FOR YOU!**

**OFFICES IN PARSONS &
PITTSBURG, KS**

620-421-6900
www.wic.insurance
A division of Wood Insurance Center

*Traditional Farms & Ranches

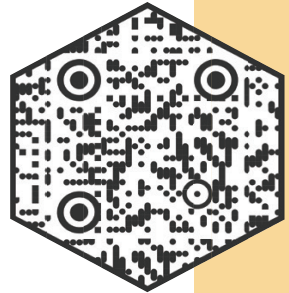
*Commercial Insurance



**BUBS MOBILE
EQUIPMENT SERVICE**
IAN TATE JR - OWNER
417-439-5535



Cherokee County Area
Beekeepers



*We meet 3rd Tuesday
each month @ 6:30 p.m.
K-State Extension Office*



CCABclub@gmail.com | @CCABclub



AMY ROSS LAW

LLC

Ph: 620-762-0300
amyrosslaw@gmail.com

P.O. Box 405
Columbus, KS 66725



HAMMER

TRUCKS & EQUIPMENT

www.hammerhigh.com

Shop: 620-429-1526

Emergency Afterhours: 620-654-7815

121 S. Delaware Ave. Columbus, KS 66725

TIRES & SERVICE

Your Hometown
Dealer for:



HERCULES TIRES

RIDE ON OUR STRENGTH

FLEET, FARM & MOBILE SERVICE

MIKE CARPINO FORD

715 N. East Avenue • Columbus, KS 66725

www.mikecarpinoford.com



ROBBIE CARPINO

General Manager
robbie@mikecarpinoford.com

Bus: (620) 429-2200

Fax: (620) 429-1966

Cell: (620) 674-1256



Columbus, Kansas
(620) 429-5515
Like Us on Facebook!



RED CEDAR LAND CO.

FISCUS LAND COMPANY, LLC

KALE KITTERMAN
SERVING KS, OK AND MO
620-249-3882



Now offering
{VIRTUAL CARE}
for Invisalign
treatment!

herronrdc.com



Herron Regional
DENTAL CENTER

Dr. Rob Herron
Dr. Lindsey Clark
Dr. Kiralyn Mosier

Call today for your
complementary
Invisalign
consultation!

806 E. Maple
Columbus, KS 66762
620-429-1020

2597 S. Broadway
Pittsburg, KS 66762
620-231-6400

Come & See, There is A Difference!



VITAL SIGNS

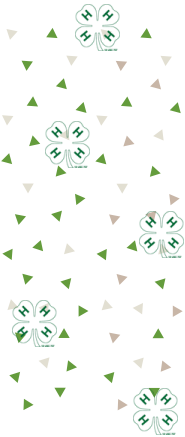
SIGN COMPANY

*SIGNS BANNERS STICKERS
VEHICLE WRAPS & BANNERS*

620.429.3000

**329 N. EAST AVE.
COLUMBUS, KS 66725**

FOLLOW US  



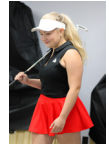
KANSAS



120

4-H YOUTH DEVELOPMENT Celebrating 120 years of Kansas 4-H

TO MAKE THE BEST BETTER



Edward Jones[®]

Member SIPC

Edward Jones and Kierstin Green celebrate the Cherokee County Fair.



Kierstin R Green
 Financial Advisor
 2050 NW South Outer Rd
 Blue Springs, MO 64015
 816-228-4022





PLANTED SEEDS
BOUTIQUE

Clothing, Accessories, & Gifts
217 S. Kansas Ave. Columbus, Kansas
913-689-8059
www.plantedseedsboutique.com



Convenient. Clean. Reliable

- Clean, modern facilities
- Self-service washers & dryers
- Wash & fold service available

208 W. Maple , Columbus, KS

620-210-8700

ESTD



2022

G6 Services, LLC

Land Clearing / Tree Trimming 🌿 Dirt / Gravel Work

620-762-6215



From Pasture to Plate

317 E. Maple Columbus, KS
Mon to Fri | 8 AM to 5PM

Processing Plant: 620.429.2382
Brady Brummett
Ronda Coltrane: 620.249.0123
coalvalleyprocessing@gmail.com
coalvalleyprocessing.com

Visit our
Facebook



Visit our
Website



- Custom Processing for Beef & Hogs .85¢ lb
- Kansas State Inspected Processing for Beef & Hogs .95¢ lb.
(For those who desire to retail sell)
- Custom Processing of Sheep & Goats *(Call for Pricing)*
 - Vacuum Sealed Packaging
 - Retail Cuts Available for Individual Purchases

Check us out on Facebook or visit: www.coalvalleyprocessing.com

CHEROKEE COUNTY

Columbus
News-Report

Your Type of NEWS-Reported
Every Monday-Wednesday-Friday

105 South Pennsylvania

620-429-4684



**FREE GAME
OF BOWLING**

**Shoe rental not included. Must present coupon.*

Come cool off at Bowler's Blvd and enjoy a game of bowling on us!
While you're here check out pizza and drink selection.
Good Luck at the Cherokee County Fair!

Coupon Expires Dec. 31, 2026



Security 1st Title

CHEROKEE COUNTY

WE'RE HERE FOR YOU



101 E. ELM | COLUMBUS, KS 66725

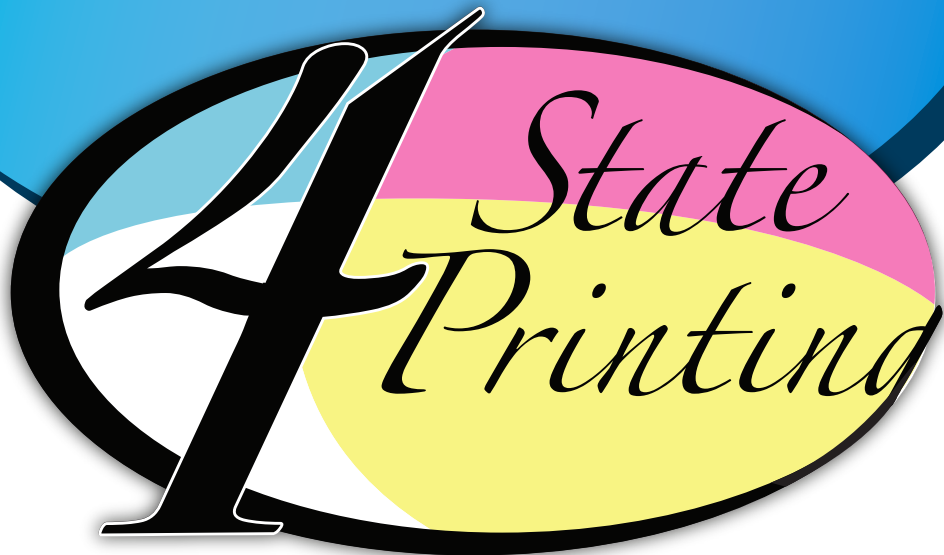
620-429-2646



WE'RE HERE TO HELP PROTECT YOUR PROPERTY RIGHTS

TITLE INSURANCE | ESCROW | ABSTRACT SERVICES | 1031 EXCHANGES

WWW.SECURITY1ST.COM



Where Your Image Is Our Business!

**Printer for the 98th Annual
Cherokee County Fair Book!
Congratulations to
all the participants!**

Phone: (620) 429-1449

email: info@fourstateprinting.com

Order online at www.fourstateprinting.com

**Proudly Serving the 4-States
and beyond since 1977.**

FARMERS COOPERATIVE ASSOCIATION

Baxter Springs, Chetopa, Columbus & Galena, KS



EST. 1950

**FEED ▶ SEED ▶ FUEL ▶ FERTILIZER
CHEMICAL ▶ CUSTOM APPLICATION
GRAIN STORAGE ▶ FARM SUPPLY**

FARMERSCOOP.COOP • 620-429-2296